



# Product Catalogue 2023



# Construction products for the building industry



# BAUER

OUR LEGACY IS NOT SOMETHING WE LEAVE BEHIND  
BUT THE FOUNDATION WE BUILD UPON





Frankfurt, Reg. No 312310 QM  
Qualitätsmanagementsystem  
Zertifiziert nach DIN EN ISO 9001



Frankfurt, Reg. No 312310 UM  
Qualitätsmanagementsystem  
Zertifiziert nach DIN EN ISO 14001



Frankfurt, Reg. No 312310 ISMS 17  
Umweltmanagement  
Zertifiziert nach DIN EN ISO/IEC 27001:2013

# Professional confidence and reliability

Our products are always designed focused on the real needs of people and the environment



# BAUER

## OUR AIM IS SIMPLE. INSTEAD OF SUPERFLUOUS FEATURES, WE OPT FOR PROVIDING REAL SOLUTIONS

We believe that people cannot be forced to adapt to the complex requirements of technology: on the contrary, technology should match people's requirements. Our experience and expertise are supported by world – class industrial facilities for the production and control of our products. **BAUER** products are designed and developed meticulously, paying great attention to detail, and are produced in modern, fully automated facilities, applying in all stages of production such as design, production and handling, the certified quality assurance system employed by the German organization **Deutsche Gesellschaft für Qualität**.





An idea stands behind every  
**BAUER** product or service



# BAUER

**B B T**™ | BAUER BUILDING TECHNOLOGIES

## **BAUER'S REPUTATION IS BASED ON DEVELOPING ITS OWN UNIQUE TECHNOLOGIES, CREATIVE SOLUTIONS AND PASSION FOR PERFECTION**

Our legacy is the common denominator that has been connecting **BAUER** products for over 50 years. We make a difference by continuously honoring our founding values and constantly desiring to challenge conventional standards. Responsibility, honesty and passion for innovation are an integral part of our identity, not a separate entity in the broader context of our proposal. We have built our company strategy around our vision and values and have ensured that this is displayed in every company expression. Every decision is made and secured with full awareness of our responsibilities. Our production process ensures a safe and

healthy environment for our employees, associates and the local communities in which we operate. Offsets and concessions regarding our values are not negotiable. The key to success is our people. They are passionate about quality and aspire to the highest levels of what they do, paying attention to every detail. That is why we are able to offer our customers products and services of exceptional quality. **BAUER** has the skills and experience to directly address the needs of professionals, technicians, manufacturers or resellers looking for the most cost-effective solutions in service, validity, and speed.



**BAUER CONTENTS**

|   |       |                             |       |  |       |
|---|-------|-----------------------------|-------|--|-------|
| <b>AQUABLOCK</b>                                  | 36    | <b>HARDOX 01 S</b>          | 67    | <b>TETRABLOCK 4,5 PM</b>                                 | 21    |
| <b>AQUASIL</b>                                    | 10    | <b>HARDOX 11</b>            | 67    | <b>ULTRA ACRYLIC</b>                                     | 39    |
| <b>AQUASIL FLEX</b>                               | 10/53 | <b>HARDOX 360</b>           | 69    | <b>ULTRA FAST</b>  | 34    |
| <b>AQUA TAPE</b>                                  | 24    | <b>HARDOX EXTRA</b>         | 65    | <b>POLYURETHANE FOAMS</b>                                | 22/36 |
| <b>AQUA PRIMER</b>                                | 14/68 | <b>HARDOX FLU-300</b>       | 65    | <b>ETICS ADHESIVE FOAM<br/>AND PISTOL CLEANER</b>        | 52    |
| <b>ARMOSEAL</b>                                   | 33    | <b>HYPER FLEX</b>           | 13    | <b>FIXTURES FOR<br/>THERMAL INSULATION</b>               | 53    |
| <b>BAU CURE</b>                                   | 66    | <b>HARDOX LEVEL FAST</b>    | 64    | <b>ACID CLEANER FOR<br/>NATURAL STONES</b>               | 46    |
| <b>BAUCAST</b>                                    | 33    | <b>HARDOX MIX</b>           | 64    | <b>ACID CLEANER<br/>FOR TILES</b>                        | 46    |
| <b>BAU COLOR</b>                                  | 28/60 | <b>HARDOX P22</b>           | 69    | <b>GRANULOMETRY<br/>MONOKAPA FLEX /<br/>KAPASIL</b>      | 55    |
| <b>BAULAT</b>                                     | 16/26 | <b>HARDOX P25</b>           | 68    | <b>UNCOUPLING<br/>MEMBRANE<br/>DRY 80 / DRY 50</b>       | 46    |
| <b>BAU-FIBERS</b>                                 | 28    | <b>HARDOX PU CLEAR COAT</b> | 61/70 | <b>COMPLEMENTARY<br/>THERMAL INSULATION<br/>PRODUCTS</b> | 53    |
| <b>BAUFINA</b>                                    | 30    | <b>HARDOX S 36</b>          | 66    | <b>BAU RESINA<br/>COLOR CHART</b>                        | 62    |
| <b>BAUFLEX FIBER</b>                              | 40    | <b>HARDOX ST VS 20</b>      | 22    | <b>GRANULATO<br/>COLOR CHART</b>                         | 56    |
| <b>BAUFLEX RAPI-GEL</b>                           | 41    | <b>HARDOX STONE CARPET</b>  | 70    |  |       |
| <b>BAUFLEX UNIVERSAL</b>                          | 40    | <b>KAPALUX FLEX</b>         | 13    |  |       |
| <b>BAU MESH 80</b>                                | 23    | <b>KAPA 11</b>              | 49    |  |       |
| <b>BAU MESH 160 / 160 S</b>                       | 52    | <b>KAPAGRIP</b>             | 50    |  |       |
| <b>BAU RESINA</b>                                 | 60    | <b>KAPASIL</b>              | 54    |  |       |
| <b>BAU RESINA B' COMPONENT</b>                    | 60    | <b>MALTA STAR</b>           | 58    |  |       |
| <b>BAUSIL</b>                                     | 61    | <b>MALTA PLUS</b>           | 58    |  |       |
| <b>BAUTHERM G</b>                                 | 51    | <b>MALTA UNO</b>            | 59    |  |       |
| <b>BAUTHERM W</b>                                 | 51    | <b>MONOFLEX</b>             | 12    |  |       |
| <b>BENTONITE WATERSTOP</b>                        | 24    | <b>MONOKAPA FLEX</b>        | 54    |  |       |
| <b>BETOSIL ADMIX</b>                              | 17/27 | <b>MONOFLEX NANO-HYBRID</b> | 12    |  |       |
| <b>BETOFIX A40</b>                                | 32    | <b>MONOFLEX PU</b>          | 13    |  |       |
| <b>BETOFIX B70</b>                                | 32    | <b>NANOLINE 900W</b>        | 15    |  |       |
| <b>BETOLAX</b>                                    | 17/27 | <b>NANOLINE 80W</b>         | 15    |  |       |
| <b>BP 80</b>                                      | 23    | <b>PERLA</b>                | 42    |  |       |
| <b>BUTYL TAPE</b>                                 | 24    | <b>PERLA SILICONE</b>       | 19/43 |  |       |
| <b>CLASSIC</b>                                    | 38    | <b>PETROBLOCK</b>           | 44    |  |       |
| <b>COLORED PAINTED<br/>&amp; NATURAL GRANULES</b> | 71    | <b>PLASTER FIX</b>          | 34/59 |  |       |
| <b>CRYSTAL</b>                                    | 45    | <b>PRO 101</b>              | 14/50 |  |       |
| <b>DECOSET</b>                                    | 44    | <b>PYROFLEX</b>             | 45    |  |       |
| <b>ECOFLEX ORGANIC</b>                            | 49    | <b>STELA</b>                | 28    |  |       |
| <b>ELASTOSIL</b>                                  | 11    | <b>STUCCOCEM</b>            | 31    |  |       |
| <b>ELASTOSIL 1K</b>                               | 11    | <b>SUPER ACRYLIC</b>        | 39    |  |       |
| <b>EPOGROUT</b>                                   | 43    | <b>SUPERBIT</b>             | 20    |  |       |
| <b>EXTRA</b>                                      | 38    | <b>SUPERBIT RUBBER</b>      | 20    |  |       |
| <b>FLEXIBLE PU SEALANT</b>                        | 19    | <b>SUPERBIT TAPE</b>        | 21    |  |       |
| <b>GRANE</b>                                      | 31    | <b>SUPERSIL ANTI-MOULD</b>  | 18    |  |       |
| <b>GRANULATO</b>                                  | 56    | <b>SUPERSIL NEUTRAL</b>     | 18    |  |       |
|   |       | <b>SUPER FIX 7</b>          | 30    |  |       |
|   |       | <b>SUPERFIX 30</b>          | 35    |  |       |
|   |       | <b>SUPERFIX 50</b>          | 35    |  |       |
|   |       | <b>SUPER-GRIP</b>           | 46    |  |       |
|   |       | <b>SUPERLAT LATEX</b>       | 16/26 |  |       |





# **Waterproofing**

# Aquasil

## Brushable cement based sealing slurry

- For complete and permanent waterproofing of concrete, brickwork, plasters, etc.
- Ideal for basements, tanks, tunnels, foundations, wells, canals, etc.
- Endures positive and negative hydrostatic pressure.
- The surface stays vapor permeable.
- Suitable for contact with drinking water.
- **Application thickness (2 coats):** ≤ 5mm and ≥ 2mm



**CONSUMPTION:** 2-4 kg/m<sup>2</sup>



| CODE / 1     | COLOR | PACKAGE | PCS./PAL.                | PRICE / KG | UNIT PRICE |
|--------------|-------|---------|--------------------------|------------|------------|
| 1.01.02.0110 | Grey  | 5 kg    | 4 pcs./box, 200pcs./pal. |            |            |
| 1.01.02.0100 | Grey  | 25 kg   | 48 pcs./pal.             |            |            |

# Aquasil Flex

## Flexible, two- component brushable cement based sealing mortar

- For complete and permanent waterproofing of concrete, brickwork, plasters.
- Ability to bridge surface cracks.
- Ideal for waterproofing surfaces that show or are expected to show hairline cracks due to thermal contractions-expansions or vibrations like surfaces to be covered with tiles on balconies, terraces, pools and bathrooms, inverted roof insulation, walls and floors of basements, tanks, wells, canals, etc.
- Endures positive and negative hydrostatic pressure and the surface remains water vapor permeable.
- Suitable for contact with drinking water.
- **Application thickness (2 coats):** ≤ 5mm and ≥ 2mm



**CONSUMPTION:** 2-4 kg/m<sup>2</sup>



| CODE / 2     | COLOR | PACKAGE     | PCS./PAL.                                    | PRICE / KG | UNIT PRICE |
|--------------|-------|-------------|--|------------|------------|
| 1.01.02.0170 | Grey  | 33 kg (A+B) | Bags 48 pcs./pal.<br>Containers 48 pcs./pal. |            |            |

## Elastosil

Flexible, two-component brushable cement based sealing mortar

- For complete and permanent waterproofing of concrete, brickwork, plasters, etc.
- Ability to bridge wide cracks (even greater than 2mm).
- Ideal for surfaces that show or are expected to show hairline cracks due to thermal contractions-expansions or vibrations like surfaces to be covered with tiles on balconies, terraces, pools and bathrooms, inverted insulation roofs, walls and floors of basements, tanks, planters, surfaces with ponding water such as terraces, etc.
- Endures positive and negative hydrostatic pressure and the surface remains water vapor permeable.
- Suitable for contact with drinking water.
- **Application thickness (2 coats):** ≤ 5mm and ≥ 2mm



**CONSUMPTION:** 2-4 kg/m<sup>2</sup>



| CODE / 2     | COLOR | PACKAGE     | PCS./PAL.                                    | PRICE / KG | UNIT PRICE |
|--------------|-------|-------------|--|------------|------------|
| 1.01.02.0120 | White | 16 kg (A+B) | 24 pcs./pal.                                 |            |            |
| 1.01.02.0090 | White | 35 kg (A+B) | Bags 48 pcs./pal.<br>Containers 48 pcs./pal. |            |            |

## Elastosil 1K

Deformable, one-component fiber reinforced cement based sealing mortar

- For waterproofing of concrete, brickwork etc.
- For sealing surfaces that show or are expected to show hairline cracks due to thermal contractions-expansions or vibrations like surfaces to be covered with tiles on balconies, terraces, pools, bathrooms, as well as basements, tanks, wells, canals, etc.
- Endures positive and negative hydrostatic pressure and the surface remains water vapor permeable.
- **Application thickness (2 coats):** ≤ 4mm and ≥ 2mm



**CONSUMPTION:** 1,5 -3 kg/m<sup>2</sup>



| CODE / 1     | COLOR | PACKAGE | PCS./PAL.    | PRICE / KG | UNIT PRICE |
|--------------|-------|---------|--------------|------------|------------|
| 1.01.02.0070 | White | 20 kg   | 48 pcs./pal. |            |            |

## Monoflex

### Elastomeric acrylic waterproofing coating for roofs

- Very flexible, fully waterproof, resistant to environmental corrosion and UV radiation.
- Features excellent adhesion to concrete, cement mortars, metal, asphalt materials, etc.
- Distinguished for excellent resistance to extreme weather conditions, maintaining its properties in temperatures ranging from -10°C to 50°C.
- Dilute with 5-10% water for a first layer as a primer.
- **Lifecycle** ≈ 7 years.



**CONSUMPTION:** 1,5 kg/m<sup>2</sup> - 2,0 kg/m<sup>2</sup>



| CODE / 2            | COLOR             | PACKAGE       | PCS./PAL.    | PRICE / KG | UNIT PRICE |
|---------------------|-------------------|---------------|--------------|------------|------------|
| 1.01.02.0130 / 0200 | White, Terracotta | 1 kg          | 12 pcs./box  |            |            |
| 1.01.02.0140 / 0210 | White, Terracotta | 5 kg          | 75 pcs./pal. |            |            |
| 1.01.02.0250 / 0260 | White, Terracotta | 12,6 kg (9 L) | 44 pcs./pal. |            |            |

## Monoflex Nano-Hybrid

### New generation hybrid elastomeric roof waterproofing coating

- New nanomolecular resin modification technology.
- Very elastic, completely waterproof with great ponding water resistance, free of polyurethanes, solvents and other dangerous toxic substances.
- Features excellent adhesion to concrete, cement mortar, fine aggregate concrete, wood, metal and all kinds of sealing layers, asphalt materials and membranes.
- Excellent resistance to extreme weather conditions.
- The surface does not stick after application (tack free) even at high temperatures and consequently does not accumulate pollutants.
- Dilute with 5-10% water for a first layer as a primer.
- **Lifecycle** ≈ 10 years.



**CONSUMPTION:** 1,3-2,0 kg/m<sup>2</sup>



| CODE / 2     | COLOR | PACKAGE      | PCS./PAL.    | PRICE / KG | UNIT PRICE |
|--------------|-------|--------------|--------------|------------|------------|
| 1.01.02.0420 | White | 1 kg         | 12 pcs./box  |            |            |
| 1.01.02.0410 | White | 5 kg         | 75 pcs./pal. |            |            |
| 1.01.02.0401 | White | 13 kg (10 L) | 44 pcs./pal. |            |            |

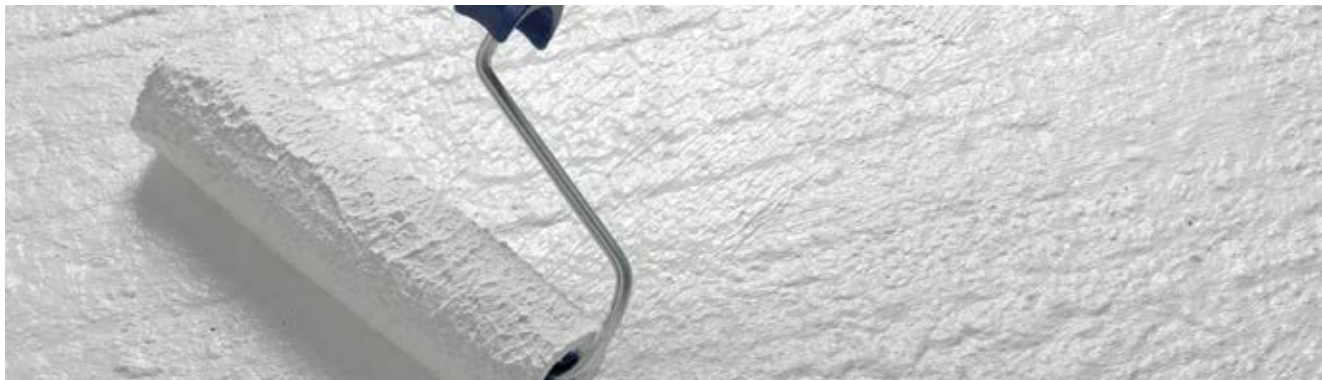
## Monoflex PU

One component, professional, brushable polyurethane waterproofing membrane

- A sealing membrane without joints is formed after application, offering high elasticity and durability.
- Very elastic, completely waterproof with great ponding water resistance.
- Features excellent adhesion to concrete, cement mortar, fine aggregate concrete, metal and all kinds of sealing layers, asphalt materials, etc.
- The surface does not stick after application (tack free) even at high temperatures and consequently does not accumulate pollutants.
- **Form:** prepolymerized polyurethane resin.
- **Lifecycle** ≈ 10 years.



**CONSUMPTION:** 2,0-4,0 kg/m<sup>2</sup>



| CODE / 7     | COLOR | PACKAGE | PCS./PAL.    | PRICE / KG | UNIT PRICE |
|--------------|-------|---------|--------------|------------|------------|
| 1.01.02.0320 | White | 6 kg    | 45 pcs./pal. |            |            |
| 1.01.02.0310 | White | 25 kg   | 24 pcs./pal. |            |            |

## Kapalux Flex

Elastic and waterproofing, 100% acrylic high quality paint

- Features total water impermeability on vertical surfaces including old plasters with hairline cracks, etc.
- Excellent elasticity even at **-20°C**
- Great ability to bridge cracks.
- For particularly difficult environmental conditions and overworked surfaces.
- High resistance to dirt and easy cleaning.
- Very long lifecycle.



**CONSUMPTION:** ≈ 10-12m<sup>2</sup>/ L



| CODE / 2              | COLOR       | PACKAGE | PCS./PAL.    | PRICE / L | UNIT PRICE |
|-----------------------|-------------|---------|--------------|-----------|------------|
| 1.01.02.1020          | White - P   | 3 L     |              |           |            |
| 1.01.02.1060.1/1060.2 | Base - D/TR | 3 L     |              |           |            |
| 1.01.02.1010          | White - P   | 10 L    | 44 pcs./pal. |           |            |
| 1.01.02.1050.1/1050.2 | Base - D/TR | 10 L    | 44 pcs./pal. |           |            |
| 1.01.02.1011          | Colored     | 10 L    | 44 pcs./pal. |           |            |
| 1.01.02.1040          | Colored     | 3 L     |              |           |            |

## Pro 101

### Preparation primer for paints and colored plasters

- Very high penetration capacity.
- Ideal substrate for colored plasters, acrylic renders and elastic coatings such as **Kapalux**, **Monokapa**, **Kapasil**, **Granulato** and **Plaster fin**.
- Suitable for porous substrates such as first layer plasters, concrete, bricks, aerated concrete, cement adhesive coatings, cement mortars, etc.



**CONSUMPTION:** ≈ 0,1 - 0,2 kg/m<sup>2</sup>



| CODE / 2     | COLOR | PACKAGE           | PCS./PAL.     | PRICE / KG | UNIT PRICE |
|--------------|-------|-------------------|---------------|------------|------------|
| 1.03.01.0390 | White | 1 kg              | 15 pcs./box   |            |            |
| 1.03.01.0410 | White | 5 kg              | 112 pcs./pal. |            |            |
| 1.03.01.0400 | White | 20 kg             | 42 pcs./pal.  |            |            |
| 1.03.01.0430 | White | 10 kg (Container) | 44 pcs./pal.  |            |            |

## Aqua Primer

### Two-component, water-based, industrial floor epoxy primer

- For priming surfaces that will be covered with epoxy coatings and as a substrate of **Monoflex PU** in low humidity concrete.
- For absorbent and non-absorbent inorganic substrates such as concrete, cement mortars, etc.



**CONSUMPTION:** ≈ 0,2-0,3 kg/m<sup>2</sup>



| CODE / 7     | COLOR       | PACKAGE    | PRICE / KG | UNIT PRICE |
|--------------|-------------|------------|------------|------------|
| 1.01.03.9080 | Pale Yellow | 8 kg (A+B) |            |            |

## Nanoline 900 W

Water and oil repellent, transparent nano impregnation surface waterproofing

- Anti - carbonation coating.
- Absorbent or very low absorbent substrate protection.
- Water vapor permeability of walls and floors remains unaffected.
- It does not produce a film on the surface and therefore does not change its original aesthetics.
- Suitable for marbles, granites, natural granite tiles, ceramic tiles, tile joints, natural or artificial stones, exposed concrete, plaster, cement mortars, bricks, etc.
- **Chemical base:** silane / siloxane aqueous dispersion.
- **Curing time:** 5-10 hours.



**CONSUMPTION:** ≈ 0,05 - 0,1 kg/m<sup>2</sup>



| CODE / 1     | COLOR            | PACKAGE | PCS./PAL.     | PRICE / KG | UNIT PRICE |
|--------------|------------------|---------|---------------|------------|------------|
| 1.03.01.0340 | Trasparent (dry) | 1 kg    | 15 pcs./box   |            |            |
| 1.03.01.0320 | Trasparent (dry) | 5 kg    | 112 pcs./pal. |            |            |
| 1.03.01.0330 | Trasparent (dry) | 20 kg   | 42 pcs./pal.  |            |            |

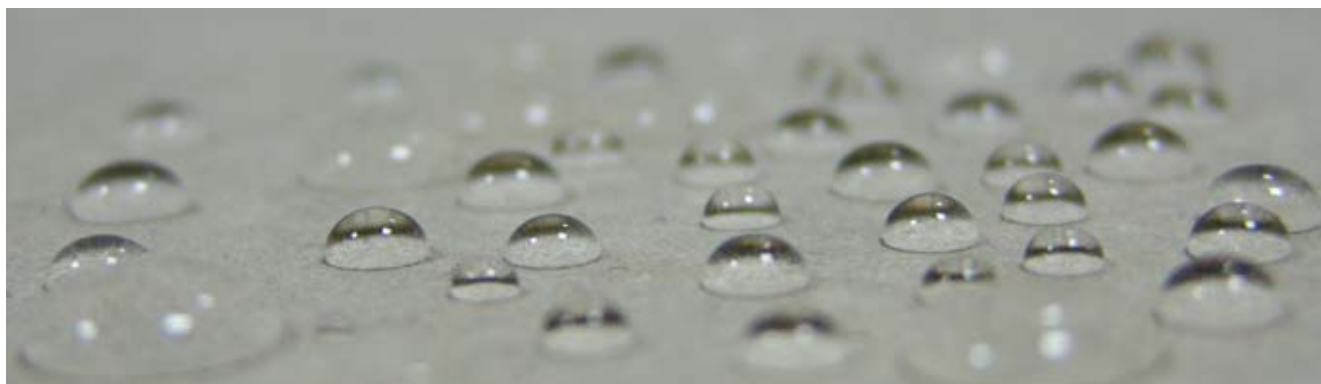
## Nanoline 80 W

Water repellent, transparent nano impregnation surface waterproofing

- Anti - carbonation coating.
- Water vapor permeability of walls and floors remains unaffected.
- It does not produce a film on the surface and therefore does not change its original aesthetics.
- For fair faced concrete, plaster, cement mortars, bricks, tiles, ceramics tiles, tile joints, natural or artificial stones, firebricks, etc.
- **Chemical base:** silane / siloxane aqueous dispersion.
- **Curing time:** 5-10 hours.



**CONSUMPTION:** ≈ 0,2-0,3 kg/m<sup>2</sup>



| CODE / 1     | COLOR            | PACKAGE | PCS./PAL.     | PRICE / KG | UNIT PRICE |
|--------------|------------------|---------|---------------|------------|------------|
| 1.03.01.0260 | Trasparent (dry) | 1 kg    | 15 pcs./box   |            |            |
| 1.03.01.0270 | Trasparent (dry) | 5 kg    | 112 pcs./pal. |            |            |
| 1.03.01.0280 | Trasparent (dry) | 20 kg   | 42 pcs./pal.  |            |            |

## Baulat

Super Mortar Enhancer based on high-density acrylic polymer. German technology

- For reinforcement, elasticity and waterproofing of plasters and underfloor heating systems. Bonds old with new concrete. In cement mortars for ramps and gutters, concrete repairs and anti-corrosion protection of rebars. As a primer for all surfaces, enhances tile adhesives and grouts, stabilizes fragile surfaces, etc.
- Provides great elasticity (produces mortars free from cracks).
- High resistance to sunlight and the environment.
- Excellent adhesion to all substrates even on smooth surfaces.
- Significant increase in mechanical strength.
- Excellent impermeability to water.



**CONSUMPTION:** 1:5 to 1:1 in the mixing water



| CODE / 2     | COLOR | PACKAGE         | PCS./PAL.     | PRICE / KG | UNIT PRICE |
|--------------|-------|-----------------|---------------|------------|------------|
| 1.03.01.0080 | White | 1 kg            | 15 pcs./box   |            |            |
| 1.03.01.0090 | White | 5 kg            | 112 pcs./pal. |            |            |
| 1.03.01.0100 | White | 20 kg           | 42 pcs./pal.  |            |            |
| 1.03.01.0110 | White | 120 kg (Barrel) | 5 pcs./pal.   |            |            |

## Superlat Latex

Mortar Enhancer based on acrylic polymer. German technology

- For reinforcement, elasticity and waterproofing of plasters and underfloor heating systems. Bonds old with new concrete. In cement mortars for ramps and gutters, concrete repairs and anti-corrosion protection of rebars. As a primer for all surfaces, enhances tile adhesives and grouts, stabilizes fragile surfaces, etc.
- Provides great elasticity (produces mortars free from cracks).
- High resistance to sunlight and the environment.
- Excellent adhesion to all substrates even on smooth surfaces.
- Significant increase in mechanical strength.
- Excellent impermeability to water.



**CONSUMPTION:** 1:5 to 1:1 in the mixing water



| CODE / 2     | COLOR | PACKAGE         | PCS./PAL.     | PRICE / KG | UNIT PRICE |
|--------------|-------|-----------------|---------------|------------|------------|
| 1.03.01.0450 | White | 1 kg            | 15 pcs./box   |            |            |
| 1.03.01.0460 | White | 5 kg            | 112 pcs./pal. |            |            |
| 1.03.01.0470 | White | 20 kg           | 42 pcs./pal.  |            |            |
| 1.03.01.0480 | White | 120 kg (Barrel) | 5 pcs./pal.   |            |            |



## Betolax

Plasticizer for concrete, mortars and concrete waterproofing agent type T9

- Reduces water requirement of concrete during application, increases its final strength, reduces porosity, achieves low mass absorbency, according to EN 934-2:T9 standards.
- Creates great fluidity in concrete and mortars, offers increased workability, especially in cases of steel reinforcement, provides an extremely smooth final surface.
- For foundations, basements, swimming pools, sewerage plants, dams, reservoirs, canals, generally where high quality watertight and easily workable concrete is required.
- **Chemical base:** Lignosulfonate processed polymer.



**CONSUMPTION:** ≈ 0,2-0,5kg per 100 kg cement



| CODE / 1     | COLOR | PACKAGE | PCS./PAL.     | PRICE / KG | UNIT PRICE |
|--------------|-------|---------|---------------|------------|------------|
| 1.03.01.0120 | Brown | 1 kg    | 15 pcs./box   |            |            |
| 1.03.01.0050 | Brown | 5 kg    | 112 pcs./pal. |            |            |
| 1.03.01.0060 | Brown | 20 kg   | 42 pcs./pal.  |            |            |
| 1.03.01.0040 | Brown | 1000 kg | IBC Tank      |            |            |

## Betosil Admix

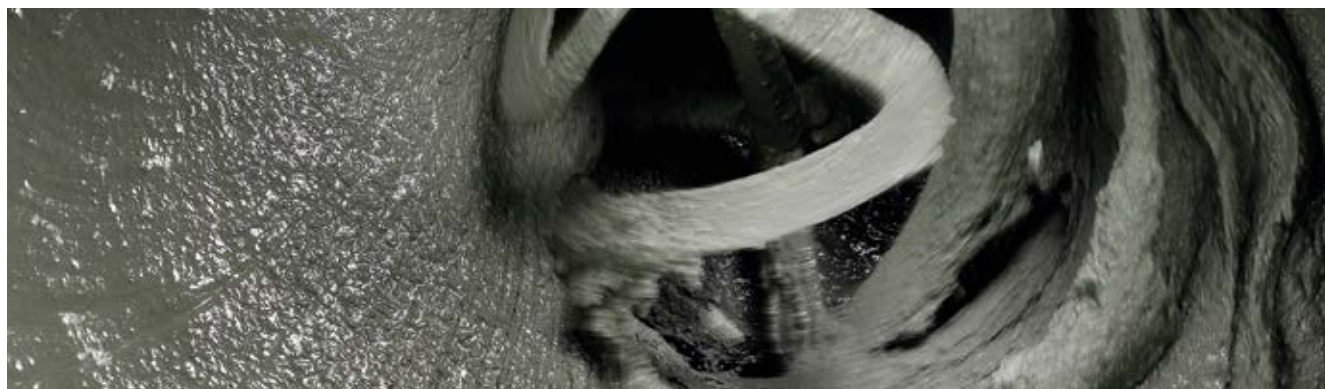
Crystalline cementitious waterproofing admixture for concrete plasticizer

- High endurance in positive and negative hydrostatic pressure.
- Permanently active for continuous protection of the structure from water penetration.
- High endurance in drastic chemicals.
- Significant reduction of water absorption through hairline cracks.
- Improves concrete durability.

**NEW!**



**CONSUMPTION:** ≈ 0,8% - 1,5% by weight of cement



| CODE / 1     | PACKAGE | PCS./PAL.    | PRICE / KG | UNIT PRICE |
|--------------|---------|--------------|------------|------------|
| 1.01.02.0350 | 20 kg   | 48 pcs./pal. |            |            |

## Supersil Anti-Mould

Acidic silicone with long lasting anti-mould action

- Suitable for sealing joints in structures made of glass, aluminum, porcelain (tiles, sanitary ware) and non-porous (glazed) ceramics.
- Ideal for bathrooms, kitchens, bathtubs, sinks, tiles, etc.
- For hospitals, laboratories and other places that are submitted to strict hygiene standards.
- Its color does not change and it does not turn black.
- Non paintable.

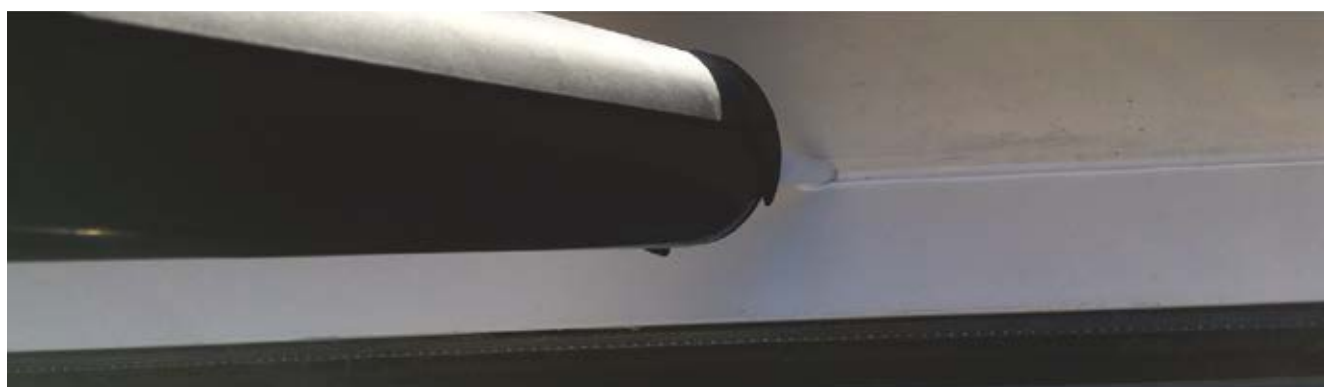


| CODE / 1     | COLOR      | PACKAGE | PCS. / BOX | UNIT PRICE |
|--------------|------------|---------|------------|------------|
| 5.01.05.0100 | Trasparent | 280ml   | 25 pcs.    |            |
| 5.01.05.0110 | White      | 280ml   | 25 pcs.    |            |

## Supersil Neutral

Jointing neutral silicon

- Ideal for sealing vertical and horizontal joints in construction and industry in general.
- Suitable for windows, joints between window frames and walls, joints of different materials such as glass, wood, concrete, plaster, brick, metal, ceramics, plastics (except PE, PP, PTFT).
- For indoor and outdoor applications with excellent resistance to moisture.
- Resistant to atmospheric agents and UV radiation.
- **Film formation time:** 5-10 minutes. (Drying speed: 3mm / 24 hours).
- Non paintable.



| CODE / 1     | COLOR      | PACKAGE | PCS. / BOX | UNIT PRICE |
|--------------|------------|---------|------------|------------|
| 5.01.05.0120 | Trasparent | 280ml   | 25 pcs.    |            |

## Flexible PU Sealant

Solvent free, polyurethane elastic sealant and multi-purpose adhesive

- Appropriate for sealing vertical and horizontal joints 10-25mm wide.
- For indoor and outdoor applications with excellent resistance to moisture.
- Features excellent adhesion to all building materials, including concrete, plaster, natural or synthetic stones, metals, aluminum, wood, ceramic, tile, plastic, etc.
- For sealing, repairs and welding on window sills, stairs, skirting boards, prefabricated elements, balcony parapets, joints around windows and doors, facades, metal panels, concrete joints, etc.
- Paintable.



| CODE / 1          | COLOR       | PACKAGE | PCS./PAL.                 | UNIT PRICE |
|-------------------|-------------|---------|---------------------------|------------|
| 5.01.05.0220-0200 | Grey, White | 310ml   | 25 pcs./box 60 boxes/pal. |            |
| 5.01.05.0230-0210 | Grey, White | 600ml   | 15 pcs./box 60 boxes/pal. |            |

## Perla Silicone

Coloured Silicone for grouting tiles

- Offers unique elasticity (e.g expansion joints etc.).
- Ideal for internal and external use.
- Suitable for grouting all types of tiles on any surface.
- Offers quick and easy application, as well as easy cleaning of any residues from the installation.

**NEW!**



| CODE / 3     | COLOR           | PACKAGE | PCS. / BOX | UNIT PRICE |
|--------------|-----------------|---------|------------|------------|
| 5.01.05.1010 | White No.1      | 280ml   | 12 pcs.    |            |
| 5.01.05.1030 | Light grey No.3 | 280ml   | 12 pcs.    |            |
| 5.01.05.1040 | Dark grey No.4  | 280ml   | 12 pcs.    |            |
| 5.01.05.1070 | Grey arzan No.7 | 280ml   | 12 pcs.    |            |
| 5.01.05.1080 | Beige No.8      | 280ml   | 12 pcs.    |            |
| 5.01.05.1090 | Ivory No.9      | 280ml   | 12 pcs.    |            |
| 5.01.05.1260 | Mocha No.26     | 280ml   | 12 pcs.    |            |

## Superbit

### Solvent free, asphalt waterproofing emulsion

- A mixture of clean asphalt and special polymers which after dispersant evaporation forms a single black elastic film sealer.
- Mainly used for waterproofing and protection of horizontal and vertical surfaces such as retaining walls, sloping roofs, floors, foundation elements, etc.
- For vapor barrier creation.
- For adhesion of thermal insulation boards.
- For renewal of asphalt paving layers.
- As a primer for adhesion of bituminous membranes.



**CONSUMPTION:** ≈ 0,2-1,0kg/m<sup>2</sup>



| CODE / 3     | COLOR      | PACKAGE | PCS./PAL.    | PRICE / KG | UNIT PRICE |
|--------------|------------|---------|--------------|------------|------------|
| 1.01.02.1560 | Dark brown | 18 kg   | 24 pcs./pal. |            |            |

## Superbit Rubber

### Elastomer asphalt waterproofing emulsion without solvents

- A mixture of clean asphalt, emulsifying resins and special elastomeric polymers which after dispersant evaporation forms a single sealing film with excellent elasticity and moisture resistance.
- Mainly used for waterproofing and protection of horizontal and vertical surfaces such as retaining walls, roofs, pitched roofs, floors, foundations, etc.
- For vapor barrier creation.
- For adhesion of thermal insulation boards.
- For renewal of asphalt paving layers.
- As a primer for adhesion of bituminous membranes.



**CONSUMPTION:** ≈ 0,2-1,0kg/m<sup>2</sup>



| CODE / 3     | COLOR      | PACKAGE | PCS./PAL.    | PRICE / KG | UNIT PRICE |
|--------------|------------|---------|--------------|------------|------------|
| 1.01.02.1200 | Dark brown | 18 kg   | 24 pcs./pal. |            |            |

## Tetrablock 4,5 PM

Plastomeric bituminous membrane with chippings for high durability absolute waterproofing

- A mixture of high quality asphalt and thermoplastic polymers (APP).
- Reinforced with a non-woven synthetic polyester shielded with glass fibers.
- The upper surface of the film is covered light grey mineral chippings, while the bottom surface has a thin polyethylene film suitable for blowtorch use.
- **Cold flexibility:** -5°C. **Temperature resistance:** + 120°C. **Softening point:** > + 150°C
- **Weight:** 4,5 kg / m<sup>2</sup>
- **Elongation at break (length):** 45%
- **Elongation at break (width):** 50%



| CODE / 3     | COLOR      | PACKAGE                     | PCS./PAL.    | PRICE / m <sup>2</sup> | UNIT PRICE |
|--------------|------------|-----------------------------|--------------|------------------------|------------|
| 5.03.04.2400 | Light grey | Roll 1x10m 10m <sup>2</sup> | 30 pcs./pal. |                        |            |

## SuperBit Tape

Adhesive asphalt joint sealing tape

- High quality elastic asphalt tape coated with aluminum.
- For sealing joints in gutters, chimneys, tiles, etc.
- Excellent adhesion to all building materials.
- Resistant to sunlight and demanding weather conditions.



| CODE / 3     | PACKAGE         | PRICE / M | UNIT PRICE |
|--------------|-----------------|-----------|------------|
| 5.03.04.3200 | Roll 15cm x 10m |           |            |

## Hardox ST VS 20

### Acrylic varnish for stone and stamped floors

- Acrylic transparent varnish for the protection of natural stones (slates, alabaster, etc.), stamped floors and artificial building materials (decorative bricks, tiles, etc.).
- Revives the natural color of the material on which it is applied on.
- Protects the surface from water, sun radiation and pollutants.
- Applied on walls and floor coverings, suitable for both indoors and outdoors applications.

**NEW!**



**CONSUMPTION:** ≈ 130-200 g/m<sup>2</sup> per layer depending on the surface absorbency



| CODE / 1     | COLOR       | PACKAGE | PCS./PAL.    | PRICE / KG | UNIT PRICE |
|--------------|-------------|---------|--------------|------------|------------|
| 1.01.03.9160 | Transparent | 1 L     | 6 pcs./box   |            |            |
| 1.01.03.9170 | Transparent | 4 L     | 48 pcs./pal. |            |            |

## PU Foam

### Standard & Low expansion foam

- Hardens with atmospheric humidity.
- Ideal for fastening, welding and sealing.
- Excellent adhesion to all types of building materials.
- Resistant to ageing and moisture.

**NEW!**



| CODE / 3     | DESCRIPTION   | PACKAGE         | PCS. / BOX | UNIT PRICE |
|--------------|---------------|-----------------|------------|------------|
| 5.01.05.0500 | Standard foam | 750ml (By hand) | 12 pcs.    |            |
| 5.01.05.0710 | Low expansion | 750ml (Pistol)  | 12 pcs.    |            |

## Bau Mesh 80

High-strength fiberglass mesh with a protective coating of special polymers against alkaline effects

- Essential for total or partial reinforcement of coatings and waterproofing layers.
- Specially designed for the reinforcement of waterproofing coatings of epoxy, polyurethane, acrylic resins, cement mortars and lime.
- Provides significant structural reinforcement and prevents cracking from temperature expansion and contraction.
- **Mesh width:** 4,5 x 4,5 mm. ± 0.2
- **Weight (g/m<sup>2</sup>):** raw net 80 g/m<sup>2</sup> ± 5%
- **Coating (g/m<sup>2</sup>):** 20 g/m<sup>2</sup> ± 5%



| CODE / 3     | COLOR    | PACKAGE                   | PCS./PAL.    | PRICE / m <sup>2</sup> | UNIT PRICE |
|--------------|----------|---------------------------|--------------|------------------------|------------|
| 5.03.04.2000 | White 80 | 50m x 1m=50m <sup>2</sup> | 48 pcs./pal. |                        |            |

## BP 80

Polyethylene drainage film

- For concrete protection and layer waterproofing when backfilling.
- High density.
- With conical protrusions 8.0mm high.
- Resistant to chemical substances and plant roots.
- Suitable for contact with drinking water.
- **Form:** high density polyethylene, brown film.
- **Material thickness:** 0.5 mm
- **Drainage capacity:** approximately 2.25 l / sec.m

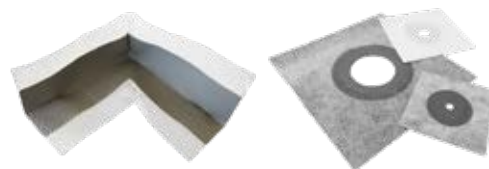


| CODE / 3     | COLOR      | PACKAGE                        | PRICE / m <sup>2</sup> | UNIT PRICE |
|--------------|------------|--------------------------------|------------------------|------------|
| 5.03.04.2200 | Dark brown | Roll 2m x 20m 40m <sup>2</sup> |                        |            |

## Aqua Tape

Sealing tape and special joint parts for corners, piping and pipettes

- High quality elastic tape made of thermoplastic elastomer.
- For sealing contraction and expansion joints, wall/floor mounting angles and perimeter of pipes and pipettes.
- Resistant to chemical exposure.
- Ensures proper evaporation of water in tile adhesives that cover the film and the parts.
- For swimming pools, bathrooms, outdoor areas, car parks and generally where floors are in contact with the ground.



| CODE / 3     | DESCRIPTION            | PACKAGE     | PRICE / m | UNIT PRICE |
|--------------|------------------------|-------------|-----------|------------|
| 5.03.04.3010 | Tape Roll 12cmx10m     | 1 pc./box   |           |            |
| 5.03.04.3020 | Internal corner        | 25 pcs./box |           |            |
| 5.03.04.3030 | External corner        | 25 pcs./box |           |            |
| 5.03.04.3040 | Collar 50mm 12cmx12cm  | 25 pcs./box |           |            |
| 5.03.04.3050 | Collar 75mm 15cmx15cm  | 25 pcs./box |           |            |
| 5.03.04.3060 | Collar 115mm 25cmx25cm | 25 pcs./box |           |            |

## Butyl Tape

Adhesive joint sealing tape

- High quality elastic butyl tape coated with polypropylene fabric.
- For sealing contraction and expansion joints and wall/floor mounting angles.
- Resistant to chemical exposure.
- Ensures proper evaporation of water in tile adhesives and sealants that cover the film.
- For swimming pools, bathrooms, outdoor areas, car parks and generally where floors are in contact with the ground.



| CODE / 3     | DESCRIPTION     | PRICE / m | UNIT PRICE |
|--------------|-----------------|-----------|------------|
| 5.03.04.3100 | Roll 10cm x 10m |           |            |

## Bentonite Waterstop

Swelling bentonite tape for waterproofing concrete joints

- **Width:** 20 x 25mm
- **Weight:** 25kg / 30m



| CODE / 3     | DESCRIPTION | PRICE / m | UNIT PRICE |
|--------------|-------------|-----------|------------|
| 5.03.04.3300 | 30m/box     |           |            |





# **Admixtures for Mortars**

## Baulat

Super Mortar Enhancer based on high-density acrylic polymer. German technology

- For reinforcement, elasticity and waterproofing of plasters and underfloor heating systems. Bonds old with new concrete. In cement mortars for ramps and gutters, concrete repairs and anti-corrosion protection of rebars. As a primer for all surfaces, enhances tile adhesives and grouts, stabilizes fragile surfaces, etc.
- Provides great elasticity (produces mortars free from cracks).
- High resistance to sunlight and the environment.
- Excellent adhesion to all substrates even on smooth surfaces.
- Significant increase in mechanical strength.
- Excellent impermeability to water.



**CONSUMPTION:** 1:5 to 1:1 in the mixing water



| CODE / 2     | COLOR | PACKAGE         | PCS./PAL.     | PRICE / KG | UNIT PRICE |
|--------------|-------|-----------------|---------------|------------|------------|
| 1.03.01.0080 | White | 1 kg            | 15 pcs./box   |            |            |
| 1.03.01.0090 | White | 5 kg            | 112 pcs./pal. |            |            |
| 1.03.01.0100 | White | 20 kg           | 42 pcs./pal.  |            |            |
| 1.03.01.0110 | White | 120 kg (Barrel) | 5 pcs./pal.   |            |            |

## Superlat Latex

Mortar Enhancer based on acrylic polymer. German technology

- For reinforcement, elasticity and waterproofing of plasters and underfloor heating systems. Bonds old with new concrete. In cement mortars for ramps and gutters, concrete repairs and anti-corrosion protection of rebars. As a primer for all surfaces, enhances tile adhesives and grouts, stabilizes fragile surfaces, etc.
- Provides great elasticity (produces mortars free from cracks).
- High resistance to sunlight and the environment.
- Excellent adhesion to all substrates even on smooth surfaces.
- Significant increase in mechanical strength.
- Excellent impermeability to water.



**CONSUMPTION:** 1:5 to 1:1 in the mixing water



| CODE / 2     | COLOR | PACKAGE         | PCS./PAL.     | PRICE / KG | UNIT PRICE |
|--------------|-------|-----------------|---------------|------------|------------|
| 1.03.01.0450 | White | 1 kg            | 15 pcs./box   |            |            |
| 1.03.01.0460 | White | 5 kg            | 112 pcs./pal. |            |            |
| 1.03.01.0470 | White | 20 kg           | 42 pcs./pal.  |            |            |
| 1.03.01.0480 | White | 120 kg (Barrel) | 5 pcs./pal.   |            |            |

## Betolax

### Plasticizer for concrete, mortars and concrete waterproofing agent type T9

- Reduces water requirement of concrete during application, increases its final strength, reduces porosity, achieves low mass absorbency, according to EN 934-2:T9 standards.
- Creates great fluidity in concrete and mortars, offers increased workability, especially in cases of dense concrete reinforcement, provides an extremely smooth final surface.
- For foundations, basements, swimming pools, sewerage plants, dams, reservoirs, canals, generally where high quality watertight and easily workable concrete is required.
- **Chemical base:** Lignosulfonate processed polymer.



**CONSUMPTION:** ≈ 0,2-0,5kg per 100 kg cement



| CODE / 1     | COLOR | PACKAGE | PCS./PAL.     | PRICE / KG | UNIT PRICE |
|--------------|-------|---------|---------------|------------|------------|
| 1.03.01.0120 | Brown | 1 kg    | 15 pcs./box   |            |            |
| 1.03.01.0050 | Brown | 5 kg    | 112 pcs./pal. |            |            |
| 1.03.01.0060 | Brown | 20 kg   | 42 pcs./pal.  |            |            |
| 1.03.01.0040 | Brown | 1000 kg | IBC Tank      |            |            |

## Betosil

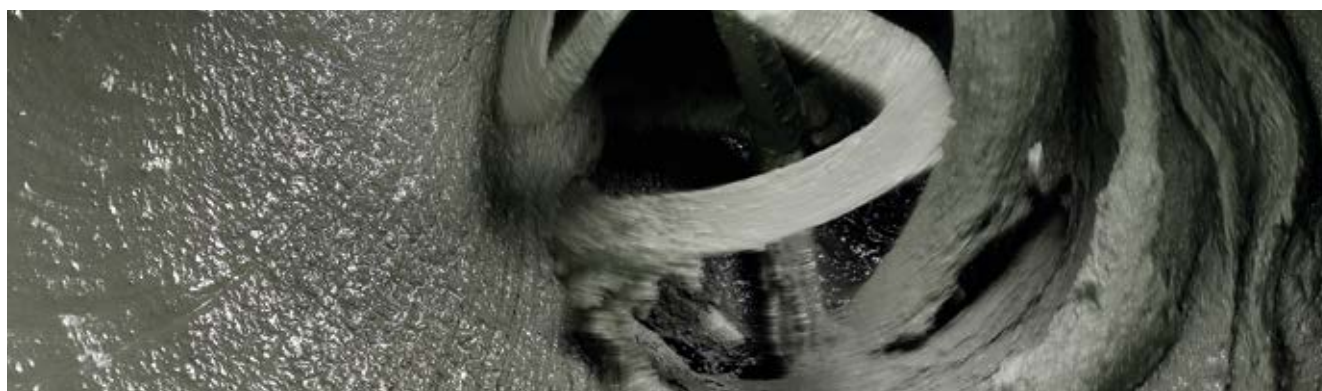
### Crystalline cementitious waterproofing admixture for concrete plasticizer

- High endurance in positive and negative hydrostatic pressure.
- Permanently active for continuous protection of the structure from water penetration.
- High endurance in drastic chemicals.
- Significant reduction of water absorption through hairline cracks.
- Improves concrete durability.

**NEW!**



**CONSUMPTION:** ≈ 0,8% - 1,5% by weight of cement



| CODE / 1     | PACKAGE | PCS./PAL.    | PRICE / KG | UNIT PRICE |
|--------------|---------|--------------|------------|------------|
| 1.01.02.0350 | 20 kg   | 48 pcs./pal. |            |            |

## Stela

### Plasticizer for cement based mortars fully replacing lime

- For use in plasters, masonry and marble mortars, sprayed mortars, decorative stone coating mortars, etc.
- Replaces lime with a very small amount of Stela when mixing mortars with water.
- Offers better adhesion and plasticity than lime, increases curing time and strength of masonry and cement mortars. Improves the final surface of mortars while significantly increasing water tightness and substantially reducing costs.



**CONSUMPTION FOR COATINGS:** 150ml / 50kg cement, for binding mortars: 100ml / 50kg cement



| CODE / 1     | PACKAGE | PCS./PAL.     | PRICE / L | UNIT PRICE |
|--------------|---------|---------------|-----------|------------|
| 1.03.01.0010 | 1 L     | 15 pcs./box   |           |            |
| 1.03.01.0020 | 5 L     | 112 pcs./pal. |           |            |
| 1.03.01.0030 | 20 L    | 42 pcs./pal.  |           |            |

## Baucolor

### Inorganic powder pigment, based on mineral oxides

- For coloring micro cement mortar **BAU RESINA**
- For coloring plasters, concrete and cement mortars.
- Add to dry cement mix with aggregate before mixing with water.
- For indoor and outdoor areas, grouts and pavers.



**CONSUMPTION:** 1.5 to 1:1 in the mixing water. To color **BAU RESINA**, please refer to its color chart.

| CODE / 3     | COLOR                       | PACKAGE                      | PCS. / BOX | UNIT PRICE |
|--------------|-----------------------------|------------------------------|------------|------------|
| 1.14.00.0011 | Ocher                       | 0,4 kg                       | 9 pcs./box |            |
| 1.14.00.0012 | Black                       | 0,7 kg                       | 9 pcs./box |            |
| 1.14.00.0013 | Terracotta                  | 0,7 kg                       | 9 pcs./box |            |
| 1.14.00.0014 | Green                       | 0,7 kg                       | 9 pcs./box |            |
| 1.14.00.0015 | Blue                        | 0,5 kg                       | 9 pcs./box |            |
| 1.14.00.0017 | Dark brown No.660           | 0,7 kg                       | 9 pcs./box |            |
| 1.14.00.1310 | <b>K</b> Ocher              | 0,25 kg (5 pcs. of 50g bags) | 9 pcs./box |            |
| 1.14.00.1320 | <b>B</b> Black              | 0,25 kg (5 pcs. of 50g bags) | 9 pcs./box |            |
| 1.14.00.1330 | <b>L</b> Light brown No.610 | 0,25 kg (5 pcs. of 50g bags) | 9 pcs./box |            |
| 1.14.00.1340 | <b>D</b> Dark brown No.660  | 0,25 kg (5 pcs. of 50g bags) | 9 pcs./box |            |
| 1.14.00.1350 | <b>G</b> Green              | 0,25 kg (5 pcs. of 50g bags) | 9 pcs./box |            |
| 1.14.00.1360 | <b>C</b> Blue               | 0,25 kg (5 pcs. of 50g bags) | 9 pcs./box |            |

**NEW!**

## Bau-Fibers

### Polypropylene fibers for reinforcement of concrete and mortars

- Prevents shrinkage cracking during the plastic phase of coagulation of mortars.
- Baufibers technology offers quick dispersion in cement and concrete.
- **Form:** white fibers, 6 and 12 mm long with 32mm diameter.
- **Swelling in liquids:** 0%
- **Melting point:** 170C°
- **Number of fibers:** ≈ 240 and 120 million / kg for 6mm and 12 mm in length, respectively.



| CODE / 3     | COLOR | PACKAGE          | PCS. / BOX | UNIT PRICE |
|--------------|-------|------------------|------------|------------|
| 5.01.04.0200 | White | 6mm / 600gr bag  | 30 pcs.    |            |
| 5.01.04.0210 | White | 12mm / 600gr bag | 30 pcs.    |            |



# **Repairing & Sealants**

## Superfix 7

### Ultra-fine polymer modified spatula putty

- For perfect smoothing on walls and ceilings.
- For indoor and outdoor use on plaster, plasterboard or concrete surfaces to be covered with paint.
- Soft spread, fast dry, no cracking, easy sanding, high performance for perfectly smooth and durable surfaces.
- **Extra fine grain for extremely smooth surface (0.05 mm maximum grain).**
- Priming not needed prior to application.
- Excellent transpiration properties.
- **Form:** dry cement based powder.



**CONSUMPTION:** ≈ 1,1 kg/m<sup>2</sup>



| CODE / 1     | COLOR | PACKAGE | PCS./PAL.                 | PRICE / KG | UNIT PRICE |
|--------------|-------|---------|---------------------------|------------|------------|
| 1.01.01.2110 | White | 5 kg    | 3 pcs./box, 150 pcs./pal. |            |            |
| 1.01.01.2100 | White | 20 kg   | 60 pcs./pal.              |            |            |

## Baufina

### Ultra-fine polymer modified pasty acrylic putty

- For perfect smoothing on walls and ceilings.
- For indoor and outdoor use on plaster, plasterboard or concrete surfaces to be covered with paint.
- Soft spread, fast dry, no cracking, easy sanding, high performance for perfectly smooth and durable surfaces.
- Extra fine grain for extremely smooth surface (0.05 mm maximum grain).
- Priming not needed prior to application.
- Excellent transpiration properties.
- **Form:** acrylic base ready to use paste.



**CONSUMPTION:** ≈ 1,1 - 2,0 kg/m<sup>2</sup>



| CODE / 1     | COLOR | PACKAGE | PCS./PAL.    | PRICE / KG | UNIT PRICE |
|--------------|-------|---------|--------------|------------|------------|
| 1.01.01.2060 | White | 5 kg    | 75 τεμ./παλ. |            |            |
| 1.01.01.2050 | White | 18 kg   | 44 τεμ./παλ. |            |            |

## Stuccocem

### Fine-grained, cement-based polymer modified trowel coating putty

- Highly resistant to moisture for partial or total smoothing and repair of concrete, plaster, etc.
- For indoor and outdoor areas.
- Classified as a repair mortar type **PCC class R2** according to the requirements of the European standard **EN 1504-3**.
- Soft spread, fast dry, no cracking, easy sanding.
- Fine grain for smooth surfaces (0.2 mm maximum grain).
- Excellent transpiration properties.
- **Form:** dry cement based powder.



**CONSUMPTION:** ≈ 1,4kg/m<sup>2</sup>/mm layer thickness



| CODE / 1     | COLOR | PACKAGE | PCS./PAL.                | PRICE / KG | UNIT PRICE |
|--------------|-------|---------|--------------------------|------------|------------|
| 1.01.01.2140 | White | 5 kg    | 4 pcs./box 200 pcs./pal. |            |            |
| 1.01.01.2120 | White | 25 kg   | 48 pcs./pal.             |            |            |
| 1.01.01.2150 | Grey  | 5 kg    | 4 pcs./box 200 pcs./pal. |            |            |
| 1.01.01.2130 | Grey  | 25 kg   | 48 pcs./pal.             |            |            |

## Grane

### Coarse-grained, polymer modified cement-based coating putty

- Highly resistant to moisture for partial or total smoothing and repair of concrete, plaster, etc.
- For indoor and outdoor areas.
- Classified as a repair mortar type **PCC class R2** according to the requirements of the European standard **EN 1504-3**.
- **Coarse grain (0.5 mm maximum grain).**
- Priming not needed prior to application.
- Excellent transpiration properties.
- **Form:** dry cement based powder.



**CONSUMPTION:** ≈ 1,4kg/m<sup>2</sup>/mm layer thickness



| CODE / 1     | COLOR | PACKAGE | PCS./PAL.    | PRICE / KG | UNIT PRICE |
|--------------|-------|---------|--------------|------------|------------|
| 1.01.01.1031 | White | 25 kg   | 48 pcs./pal. |            |            |

## Betofix A40

### Polymer modified cement-based mortar for concrete repairs

- Modified with polymeric reinforcements to repair concrete on total surface or spot areas, to form fillets at wall-floor junctions, imperfections, corners, groove creation, to fix ridge tiles on roofs, etc.
- Classified as a repair mortar type **PCC class R2** according to the requirements of the European standard **EN 1504-3**.
- One component, fiber reinforced mortar.
- Stable volume, without corrosive ingredients.



**CONSUMPTION:** ≈ 15kg/m<sup>2</sup>/cm layer thickness



| CODE / 1     | COLOR | PACKAGE | PCS./PAL.                | PRICE / KG | UNIT PRICE |
|--------------|-------|---------|--------------------------|------------|------------|
| 1.01.01.1190 | Grey  | 5 kg    | 4 pcs./box 200 pcs./pal. |            |            |
| 1.01.01.1090 | Grey  | 25 kg   | 48 pcs./pal.             |            |            |

## Betofix B70

### Fast setting, fiber-reinforced, polymer modified, cement-based, non-shrinking mortar for concrete repairs

- Stable volume with compensable shrinkage to prevent cracking.
- Develops more than twice the compressive strength of ordinary concrete, has high thixotropy (thickness up to 60mm / layer), completely free of corrosive ingredients and modified with polymeric reinforcements for excellent adhesion.
- For highly demanding structural repairs and concrete reinforcements, restoration work on deteriorated surfaces, damaged concrete with exposed steel, forming fillets at wall-floor junctions, groove creation, peak fastening, restoring aesthetic appearance on total surface or spot areas.
- Classified as concrete repair mortar type **R4**, in accordance with the requirements of the European standard **EN 1504-3**.



**CONSUMPTION:** ≈ 15kg/m<sup>2</sup>/cm layer thickness



| CODE / 1     | COLOR | PACKAGE | PCS./PAL.                | PRICE / KG | UNIT PRICE |
|--------------|-------|---------|--------------------------|------------|------------|
| 1.01.01.1170 | Grey  | 5 kg    | 4 pcs./box 200 pcs./pal. |            |            |
| 1.01.01.1070 | Grey  | 25 kg   | 54 pcs./pal.             |            |            |



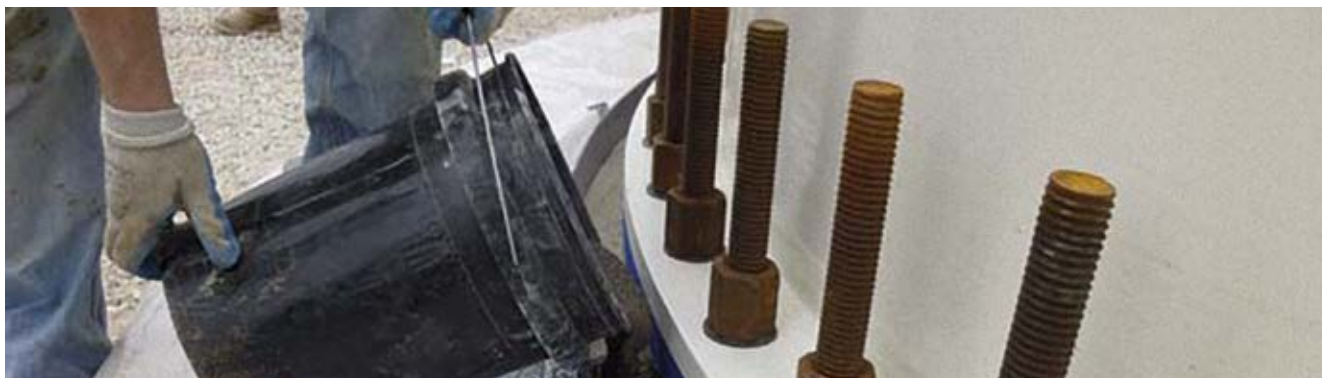
## Baucast

Non-shrinking, repair and reinforcement mortar for casting

- Develops more than twice the compressive strength of ordinary concrete. Applied in thicknesses up to 100mm / layer.
- Completely free of corrosive substances and chlorides, polymer-modified reinforcement for excellent adhesion on surfaces.
- Suitable for construction sheathing or filling voids in concrete elements, anchoring, filling of joints, seating and encasing of machinery, bearings and anchors, metal beams-pillars, etc.
- Classified as repair concrete mortar type **R4**, in accordance to the requirements of the European standard **EN 1504- 3**.



**CONSUMPTION:** ≈ 20kg/m<sup>2</sup>/cm or 2,0kg/L



| CODE / 1     | COLOR | PACKAGE | PCS./PAL.    | PRICE / KG | UNIT PRICE |
|--------------|-------|---------|--------------|------------|------------|
| 1.01.01.1100 | Grey  | 25 kg   | 48 pcs./pal. |            |            |

## Armoseal

Brushable bonding layer mortar designed to protect steel reinforcements from corrosion

- Armoseal creates the right pH environment to protect steel reinforcements.
- Ideal bonding layer between old and new concrete or mortar.
- **Form:** cementitious powder.



**CONSUMPTION:** Corrosion protection≈70–100g / reinforcement running meter, as bonding layer ≈ 2kg/m<sup>2</sup>



| CODE / 1     | COLOR      | PACKAGE | PCS./PAL.                 | PRICE / KG | UNIT PRICE |
|--------------|------------|---------|---------------------------|------------|------------|
| 1.01.10.0540 | Light blue | 1 kg    | 8 pcs./box, 400 pcs./pal. |            |            |
| 1.01.10.0550 | Light blue | 5 kg    | 4 pcs./box, 200 pcs./pal. |            |            |
| 1.01.10.0561 | Light blue | 20 kg   | 60 pcs./box               |            |            |

## Plaster Fix

Fast setting, polymer modified white repair render for a wide variety of repairs and fixes

- Ideal for fixing damaged corners, filling cracks and gaps, shape broken plasters and restoring damages caused by the operation of construction crews like plumbers, casing installers, carpenters, electricians, etc.
- **Advantages:** Quick plaster repairs/ Excellent workability / High mechanical strength / Excellent adhesion / Non visible splices.
- **Form:** cementitious dry mortar with maximum grain size 1,30mm (as the traditional marble plaster).



**CONSUMPTION:** ≈ 15kg/m<sup>2</sup>/cm layer thickness



| CODE / 1     | COLOR | PACKAGE | PCS./PAL.                | PRICE / KG | UNIT PRICE |
|--------------|-------|---------|--------------------------|------------|------------|
| 1.01.01.1150 | White | 5 kg    | 4 pcs./box 200 pcs./pal. |            |            |
| 1.01.01.1050 | White | 25 kg   | 48 pcs./pal.             |            |            |

## Ultra Fast

Fast setting, fiber reinforced, stable volume cement mortar

- Workable for 10 minutes. Fast fixing reinforcement mesh in renders, electrical panels and junction boxes replacing plaster casts, necessary for plumbing work, mounting aluminum profiles, in wells and generally where work speed is required.
- Suitable for anchorages and placements of metal railings and columns, sealing of holes, fixing of corner profiles, corner beads and many other applications.



**CONSUMPTION:** ≈ 15kg/m<sup>2</sup>/cm layer thickness



| CODE / 1     | COLOR | PACKAGE | PCS./PAL.                | PRICE / KG | UNIT PRICE |
|--------------|-------|---------|--------------------------|------------|------------|
| 1.01.10.0520 | Grey  | 2 kg    | 8 pcs./box 250 pcs./pal. |            |            |
| 1.01.10.0530 | Grey  | 25 kg   | 48 pcs./pal.             |            |            |

## Superfix 30

### Epoxy based, 2-component, thixotropic adhesive and sealant agent

- Applied with trowel in layers of maximum thickness 30mm on horizontal surfaces and 15 mm on vertical surfaces.
- Provides very high strength bonding among different materials such as concrete, natural stone, mortar, bricks, cement, steel, aluminum, wood, glass, polyester, epoxy and many more. Solvent free, stable volume, multipurpose bonding agent for a large variety of repairs, welds, sealings, etc.
- Non-shrinking and unaffected by moisture.
- **Form:** thixotropic paste.
- **Density (A + B):** 1,80 kg/L



**CONSUMPTION:** ≈ 20kg/m<sup>2</sup>/cm or 2,0kg/L



| CODE / 7     | COLOR      | PACKAGE | PCS./PAL.    | PRICE / KG | UNIT PRICE |
|--------------|------------|---------|--------------|------------|------------|
| 1.01.10.0500 | Light grey | 1 kg    | 6 pcs./box   |            |            |
| 1.01.10.0470 | Light grey | 4 kg    | 48 pcs./pal. |            |            |

## Superfix 50

### Low viscosity injection epoxy resin

- Thin liquid adhesive and sealing material with zero shrinkage used to fill and seal voids and cracks in structures such as bridges and other civil engineering buildings, industrial and residential buildings, e.g. columns, beams, foundations, walls, floors and water retaining structures.
- It is applied by resin injections or casting.
- It forms a barrier against water infiltration, prevents corrosion and contributes to the adhesion (monolithicity) of concrete.
- **Density (A + B):** 1,10 kg / l
- **Working time:** 10°C → 85 min, 30°C → 15 min



**CONSUMPTION:** ≈ 1,1kg/L

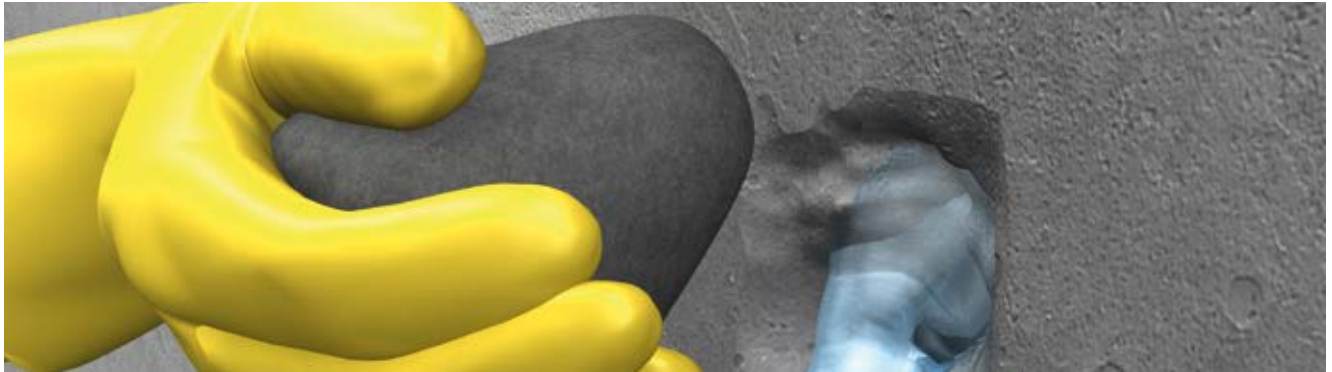


| CODE / 7     | COLOR      | PACKAGE | PCS./PAL.    | PRICE / KG | UNIT PRICE |
|--------------|------------|---------|--------------|------------|------------|
| 1.01.10.0510 | Trasparent | 1 kg    | 6 pcs./box   |            |            |
| 1.01.10.0480 | Trasparent | 9 kg    | 48 pcs./pal. |            |            |

## Aquablock

Fast setting mortar for sealing water leaks, fast fixing and anchoring. The mixture remains workable for 1-2 minutes.

- **Form:** Dry cement-based powder.
- **Mortar Density:** 1,2 kg/l
- **Mixing ratio:** 30% water by weight.



| CODE / 1     | COLOR | PACKAGE | PCS./PAL.                     | PRICE/KG | UNIT PRICE |
|--------------|-------|---------|-------------------------------|----------|------------|
| 1.01.04.1100 | Grey  | 1 kg    | 10 pcs./box 250 pcs./pal.     |          |            |
| 1.01.01.1130 | Grey  | 20 kg   | 4 pcs. x 5 kg in plastic pail |          |            |

## PU Foam

Standard & Low expansion foam

- Hardens with atmospheric humidity.
- Ideal for fastening, welding and sealing.
- Excellent adhesion to all types of building materials.
- Resistant to ageing and moisture.

**NEW!**



| CODE / 3     | DESCRIPTION   | PACKAGE         | PCS. / BOX | UNIT PRICE |
|--------------|---------------|-----------------|------------|------------|
| 5.01.05.0500 | Standard foam | 750ml (By hand) |            |            |
| 5.01.05.0710 | Low expansion | 750ml (Pistol)  |            |            |



# **Tile Adhesives**

# Classic

## Cement based tile adhesive

- For fixing ceramic tiles on walls and floors.
- Ideal for surfaces made of concrete, cement mortar, brickwork, render, etc.
- For indoor and outdoor areas.
- Classified as adhesive type **C1**



**CONSUMPTION:** ≈ 1,5-4,0 kg/m<sup>2</sup>



| CODE / 6     | COLOR | PACKAGE | PCS./PAL.    | PRICE / KG | UNIT PRICE |
|--------------|-------|---------|--------------|------------|------------|
| 1.01.00.0410 | White | 25 kg   | 54 pcs./pal. |            |            |
| 1.01.00.0560 | Grey  | 25 kg   | 54 pcs./pal. |            |            |

# Extra

## High-quality cement-based tile adhesive

- For fixing ceramic tiles on walls and floors.
- Ideal for surfaces made of concrete, cement mortar, brickwork, render, etc.
- Resistant to frost and humidity.
- No vertical slip and increased thixotropy during application.
- For indoor and outdoor areas.
- Classified as adhesive type **C2T**



**CONSUMPTION:** ≈ 1,5-4,0 kg/m<sup>2</sup>



| CODE / 6     | COLOR | PACKAGE | PCS./PAL.                | PRICE / KG | UNIT PRICE |
|--------------|-------|---------|--------------------------|------------|------------|
| 1.01.00.0500 | White | 5 kg    | 4 pcs./box 200 pcs./pal. |            |            |
| 1.01.00.0420 | White | 25 kg   | 54 pcs./pal.             |            |            |
| 1.01.00.0530 | Grey  | 25 kg   | 54 pcs./pal.             |            |            |

## Super Acrylic

High-quality, polymer-modified cement-based tile adhesive

- For fixing granite tiles and generally absorbent or non-absorbent tiles on walls and floors.
- Ideal for surfaces made of concrete, cement mortar, brickwork, render, etc.
- Highly resistant to frost and humidity.
- Extended open time for faster and more secure installations.
- For indoor and outdoor areas.
- Classified as reinforced adhesive type **C2E**



**CONSUMPTION:** ≈ 1,5kg - 4,0kg/m<sup>2</sup>



| CODE / 6    | COLOR | PACKAGE | PCS./PAL.    | PRICE / KG | UNIT PRICE |
|-------------|-------|---------|--------------|------------|------------|
| 1.01.00.430 | White | 25 kg   | 54 pcs./pal. |            |            |
| 1.01.00.470 | Grey  | 25 kg   | 54 pcs./pal. |            |            |

## Ultra Acrylic

High-quality, polymer-modified cement-based tile adhesive

- For fixing of all types of tiles, natural stones and large tiles on walls and floors.
- Ideal for surfaces made of concrete, cement mortar, brickwork, render, etc.
- Highly resistant to frost and humidity.
- No vertical slip and increased thixotropy during application.
- Extended open time for faster and more secure installations.
- Classified as reinforced adhesive type **C2TE**



**CONSUMPTION:** ≈ 1,5-4,0 kg/m<sup>2</sup>



| CODE / 6     | COLOR | PACKAGE | PCS./PAL.    | PRICE / KG | UNIT PRICE |
|--------------|-------|---------|--------------|------------|------------|
| 1.01.00.0450 | White | 25 kg   | 54 pcs./pal. |            |            |
| 1.01.00.0540 | Grey  | 25 kg   | 54 pcs./pal. |            |            |

## Bauflex Fiber

High-quality, fiber-reinforced polymer-modified cement-based tile adhesive

- For high demands in adhesion and resistance to cracking, strong thermal expansion and contraction forces, frost and moisture.
- For fixing tiles and natural stones of all types and dimensions on walls and floors.
- Ideal for surfaces made of concrete, cement mortar, brickwork, render, under floor heating, swimming pools, etc.
- No vertical slip and extended open time for faster and more secure installations.
- **LOW DUST TECHNOLOGY** that minimizes floating dust when mixing it with water before application.
- Classified as reinforced adhesive type **C2TE S1**



**CONSUMPTION:** ≈ 1,5-4,0 kg/m<sup>2</sup>



| CODE / 6     | COLOR | PACKAGE | PCS./PAL.                | PRICE / KG | UNIT PRICE |
|--------------|-------|---------|--------------------------|------------|------------|
| 1.01.00.0510 | White | 5 kg    | 4 pcs./box 200 pcs./pal. |            |            |
| 1.01.00.0480 | White | 25 kg   | 54 pcs./pal.             |            |            |
| 1.01.00.0550 | Grey  | 25 kg   | 54 pcs./pal.             |            |            |

## Bauflex Universal

High standard, flexible, cement based, polymer-modified tile adhesive

- Excellent adhesion to surfaces and high deformation factor.
- For high demands in adhesion and resistance to cracking, strong thermal expansion and contraction forces, frost and moisture.
- For fixing tiles and natural stones of all types, dimensions and weight on walls and floors.
- Suitable for very thick applications.
- Ideal for concrete surfaces, cement mortar, brickwork, renders as well as for substrates such as old tiles, under floor heating, mosaics, swimming pools, plasterboards, cement based sealants, etc.
- Provides great surface coverage, high thixotropy, extended open time for faster and more secure installations.
- Classified as reinforced adhesive type **C2TE S1**



**CONSUMPTION:** ≈ 1,3-4,0 kg/m<sup>2</sup>



| CODE / 6     | COLOR | PACKAGE | PCS./PAL.    | PRICE / KG | UNIT PRICE |
|--------------|-------|---------|--------------|------------|------------|
| 1.01.00.0490 | White | 23 kg   | 54 pcs./pal. |            |            |



## Bauflex Rapi-Gel

High standard, flexible, fast setting, polymer-modified cement based tile adhesive

- Excellent adhesion to surfaces and high deformation factor. For high demands in adhesion and resistance to cracking, strong thermal expansion and contraction forces, frost and moisture.
- For fixing tiles and natural stones of all types, dimensions and weight on walls and floors.
- Ideal for common or difficult to bond substrates such as old tiles, under floor heating, mosaics, swimming pools, plasterboards, cement based sealants, etc.
- Soft spreading, great surface coverage, high thixotropy extended open time for faster and more secure installations.
- Classified as reinforced adhesive type **C2TE S1**

NEW!



**CONSUMPTION:** ≈ 1,5kg - 4,0kg/m<sup>2</sup>



| CODE / 6     | COLOR | PACKAGE | PCS./PAL.    | PRICE / KG | UNIT PRICE |
|--------------|-------|---------|--------------|------------|------------|
| 1.01.00.0570 | White | 25 kg   | 54 pcs./pal. |            |            |

## Hyper Flex

High standard, elastic, polymer-modified cement based tile adhesive

- Unsurpassed adhesion to surfaces and very high modulus in shear stresses.
- For very high resistance to cracking from thermal contraction and expansion, superior resistance to frost and humidity.
- For fixing of all types of tiles, all dimensions and weight on walls and floors.
- Ideal for demanding substrates such as old tiles, under floor heating, mosaics, swimming pools, plasterboards, cement based sealants, metal surfaces that require strong adhesion and flexibility.
- No vertical slip and extended open time for faster and more secure installations.
- Classified as reinforced adhesive type **C2TE S2**



**CONSUMPTION:** ≈ 1,5-4,0 kg/m<sup>2</sup>



| CODE / 6     | COLOR | PACKAGE | PCS./PAL.    | PRICE / KG | UNIT PRICE |
|--------------|-------|---------|--------------|------------|------------|
| 1.01.00.0460 | White | 25 kg   | 54 pcs./pal. |            |            |

# Perla

Reinforced, cement-based, water-repellent and high strength tile grout

- Unique color stability, unsurpassed mechanical strength.
- Bacteriostatic properties preventing the creation of bacteria.
- Resistant to dirt and easy to clean.
- Suitable for grouting ceramic tiles, ceramic granite, glass mosaic tiles and natural stone, for internal or external use on walls or floors.
- Quick filling of joints and very easy cleaning of residues.
- Classified as reinforced grout, waterproof and highly resistant to abrasion type **CG2 WA** in accordance with European standards **EN 13888**



| CODE / 1     | COLOR            | PACKAGE | PCS./PAL.               | PRICE / KG | UNIT PRICE |
|--------------|------------------|---------|-------------------------|------------|------------|
| 1.04.45.0010 | White No.1       | 5 kg    | 4 pcs./box 200pcs./pal. |            |            |
| 1.04.45.0030 | Light grey No.3  | 2 kg    | 8 pcs./box 400pcs./pal. |            |            |
| 1.04.45.0060 | Manhattan No.6   |         |                         |            |            |
| 1.04.45.0070 | Grey arzan No.7  |         |                         |            |            |
| 1.04.45.0020 | Beige No.8       |         |                         |            |            |
| 1.04.45.0040 | Ivory No.9       |         |                         |            |            |
| 1.04.45.0050 | Bahama No.10     |         |                         |            |            |
| 1.04.45.0210 | Ice white No.21  |         |                         |            |            |
| 1.04.45.0250 | Jasmine No.25    |         |                         |            |            |
| 1.04.45.0270 | Beige Sand No.27 |         |                         |            |            |
| 1.04.45.0290 | Vanilla No.29    |         |                         |            |            |
| 1.04.45.0340 | Pearl GreyNo.34  |         |                         |            |            |
| 1.04.45.0520 | Light Blue No.52 |         |                         |            |            |

**NEW!**

| CODE / 1     | COLOR             | PACKAGE | PCS./PAL.               | PRICE / KG | UNIT PRICE |
|--------------|-------------------|---------|-------------------------|------------|------------|
| 1.04.45.0080 | Dark grey No.4    | 5 kg    | 4 pcs./box 200pcs./pal. |            |            |
| 1.04.45.0090 | Light brown No.11 | 2 kg    | 8 pcs./box 400pcs./pal. |            |            |
| 1.04.45.0100 | Dark brown No.12  |         |                         |            |            |
| 1.04.45.0200 | Caramel No.15     |         |                         |            |            |
| 1.04.45.0160 | Ocher No.22       |         |                         |            |            |
| 1.04.45.0155 | Olive Green No.23 |         |                         |            |            |
| 1.04.45.0180 | Cement grey No.24 |         |                         |            |            |
| 1.04.45.0260 | Mocha No.26       |         |                         |            |            |

| CODE / 1     | COLOR             | PACKAGE | PCS./PAL.               | PRICE / KG | UNIT PRICE |
|--------------|-------------------|---------|-------------------------|------------|------------|
| 1.04.45.0110 | Black No.2        | 5 kg    | 4 pcs./box 200pcs./pal. |            |            |
| 1.04.45.0120 | Anthracite No.5   | 2 kg    | 8 pcs./box 400pcs./pal. |            |            |
| 1.04.45.0130 | Terracotta No.16  |         |                         |            |            |
| 1.04.45.0140 | Cotto No.17       |         |                         |            |            |
| 1.04.45.0170 | Brown/Black No.20 |         |                         |            |            |
| 1.04.45.0450 | Cypress No.45     |         |                         |            |            |

**NEW!**

# EpogROUT

## Epoxy based two component, solvent free tile grout

- Impermeable to water, anti-bacterial, high mechanical strength and chemical resistance.
- Excellent adhesion to surfaces.
- Suitable for horizontal or vertical surfaces.
- Soft spread and easy clean during application.
- Ideal for areas with strict hygiene protocols i.e. food industry, pharmaceutical industries, kitchens, pools, etc.
- **Form:** two components (A) Paste (B) Hardener.



| CODE / 7     | COLOR             | PACKAGE | PRICE / KG | UNIT PRICE |
|--------------|-------------------|---------|------------|------------|
| 1.01.10.0301 | White No.1        | 3 kg    |            |            |
| 1.01.10.0308 | Beige No.8        |         |            |            |
| 1.01.10.0303 | Light grey No.3   |         |            |            |
| 1.01.10.0302 | Black No.2        |         |            |            |
| 1.01.10.0304 | Dark grey No.4    |         |            |            |
| 1.04.45.0050 | Bahama No.10      |         |            |            |
| 1.01.10.0312 | Dark brown No.12  |         |            |            |
| 1.01.10.0315 | Light Blue No.52  |         |            |            |
| 1.01.10.0309 | Ivory No.9        |         |            |            |
| 1.01.10.0306 | Manhattan No.6    |         |            |            |
| 1.01.10.0311 | Light brown No.11 |         |            |            |
| 1.01.10.0307 | Grey arzan No.7   |         |            |            |
| 1.01.10.0316 | Terracotta No.16  |         |            |            |
| 1.04.45.0200 | Caramel No.15     |         |            |            |
| 1.04.45.0120 | Anthracite No.5   |         |            |            |
| 1.04.45.0450 | Cypress No.45     |         |            |            |

### Estimated Consumption for Perla & EpogROUT (gr/m<sup>2</sup>)

| Tile dimensions | g / m <sup>2</sup> joint width |       |       |       |       |
|-----------------|--------------------------------|-------|-------|-------|-------|
|                 | 1 MM                           | 2 MM  | 3 MM  | 5 MM  | 8 MM  |
| 2 x 2 x 0,3     | 550                            | 1.100 | 1.650 | -     | -     |
| 15 x 15 x 0,7   | 200                            | 400   | 600   | 1.000 | 1.600 |
| 20 x 20 x 0,7   | 150                            | 300   | 450   | 750   | 1.200 |
| 30 x 30 x 0,8   | 115                            | 230   | 345   | 575   | 920   |
| 60 x 60 x 1,0   | 65                             | 130   | 195   | 325   | 520   |
| 60 x 1200 x 1,0 | 50                             | 100   | 150   | 250   | 400   |

# Perla Silicone

## Coloured Silicone for grouting tiles

- Offers unique elasticity (e.g expansion joints etc.).
- Ideal for internal and external use.
- Suitable for grouting all types of tiles on any surface.
- Offers quick and easy application, as well as easy cleaning of any residues from the installation.



| CODE / 3     | COLOR           | PACKAGE | PCS. / BOX | UNIT PRICE |
|--------------|-----------------|---------|------------|------------|
| 5.01.05.1010 | White No.1      | 280ml   | 12 pcs.    |            |
| 5.01.05.1030 | Light grey No.3 | 280ml   | 12 pcs.    |            |
| 5.01.05.1040 | Dark grey No.4  | 280ml   | 12 pcs.    |            |
| 5.01.05.1070 | Grey arzan No.7 | 280ml   | 12 pcs.    |            |
| 5.01.05.1080 | Beige No.8      | 280ml   | 12 pcs.    |            |
| 5.01.05.1090 | Ivory No.9      | 280ml   | 12 pcs.    |            |
| 5.01.05.1260 | Mocha No.26     | 280ml   | 12 pcs.    |            |

## Decoset

High performance, coarse grained, cement based, polymer-modified adhesive for thick layer installations (up to 15-20mm)

- Suitable for fixing decorative bricks, natural stone, composite stone of all types, large tiles, ceramic tiles of all types, granite, etc.
- Also suitable for grouting.
- Ideal for surfaces made of concrete, cement mortar, brickwork, render, etc.
- Extended open time for faster and safer installations.



**CONSUMPTION:** ≈ 2,0-5,0 kg/m<sup>2</sup>



| CODE / 1     | COLOR | PACKAGE | PCS./PAL.    | PRICE / KG | UNIT PRICE |
|--------------|-------|---------|--------------|------------|------------|
| 1.01.00.0290 | White | 25 kg   | 48 pcs./pal. |            |            |
| 1.01.00.0300 | Grey  | 25 kg   | 48 pcs./pal. |            |            |

## Petroblock

Special cement-based adhesive for light structural elements and aerated concrete blocks

- Suitable as a filler for joints and masonry troweling or worn structural elements.
- For indoor and outdoor use.
- Applicable on aerated concrete, bricks, cement blocks, lightweight concrete.



**CONSUMPTION:** ≈ 15-25 kg/m<sup>3</sup>



| CODE / 1     | COLOR | PACKAGE | PCS./PAL.    | PRICE / KG | UNIT PRICE |
|--------------|-------|---------|--------------|------------|------------|
| 1.01.00.0260 | White | 25 kg   | 48 pcs./pal. |            |            |

## Crystal

High performance antifungal polymer-modified adhesive for glass block tiles

- Also suitable for grouting glass brick tiles.



**CONSUMPTION:** ≈ 15kg - 20 kg/m<sup>2</sup>



| CODE / 1     | COLOR | PACKAGE | PCS./PAL.                | PRICE / KG | UNIT PRICE |
|--------------|-------|---------|--------------------------|------------|------------|
| 1.01.00.0280 | White | 5 kg    | 4 pcs./box 200 pcs./pal. |            |            |
| 1.01.00.0270 | White | 25 kg   | 48 pcs./pal.             |            |            |

## Pyroflex

Special adhesive for firebricks and other refractory components

- Applied to all types of firebricks and materials requiring high temperature resistance (**Temperature resistance: 1.080 C°**).
- **Pyroflex** does not crack and can be used for grouting of the elements or repairing broken joints and firebricks.



**CONSUMPTION:** ≈ 15kg/m<sup>2</sup>



| CODE / 1     | COLOR | PACKAGE | PCS./PAL.                 | PRICE / KG | UNIT PRICE |
|--------------|-------|---------|---------------------------|------------|------------|
| 1.01.10.0320 | Grey  | 5 kg    | 4 pcs./box, 200 pcs./pal. |            |            |
| 1.01.00.0310 | Grey  | 25 kg   | 48 pcs./pal.              |            |            |

## Super-Grip

### High-tech, one-component water-based primer

- Suitable for enhancing adhesion of cementitious adhesives, mortars and self-leveling coatings.
- For absorbent and non-absorbent surfaces such as old tile layers, mosaics, industrial floors, metal floors, PVC flooring, etc.
- **Form:** acrylic emulsion.



**CONSUMPTION:** ≈ 0,2 kg/m<sup>2</sup>

| CODE / 2     | COLOR | PACKAGE | PCS./PAL.     | PRICE / KG | UNIT PRICE |
|--------------|-------|---------|---------------|------------|------------|
| 1.03.01.0550 | Blue  | 1 kg    | 15 pcs./box   |            |            |
| 1.03.01.0560 | Blue  | 5 kg    | 112 pcs./pal. |            |            |
| 1.03.01.0570 | Blue  | 20 kg   | 42 pcs./pal.  |            |            |

## Acid cleaner for natural stones

### Special (acidic) cleaner for natural stone and fireplaces

- Cleans and restores the natural color of stone, removing any kind of residue such as dirt, soot (fireplace), dust, mold, grouting and general impurities that accumulate over time.
- For all natural stones. If in doubt about the type of surface, a trial in a small portion of the surface is recommended.
- Chemical composition: phosphoric acid solution and synthetic detergents.
- **Anionic surfactant content:** ≤5%. **Odor:** typical and subtle.



**CONSUMPTION:** ≈ 1 L/4-5m<sup>2</sup>

| CODE / 1     | COLOR      | PACKAGE | PCS./PAL.     | PRICE / L | UNIT PRICE |
|--------------|------------|---------|---------------|-----------|------------|
| 1.02.00.0082 | Trasparent | 1 L     | 15 pcs./box   |           |            |
| 1.02.00.0202 | Trasparent | 5 L     | 112 pcs./pal. |           |            |

## Acid cleaner for tiles

### Special (acidic) cleaner for ceramic tiles and grouts

- Drastically removes any kind of cement, plaster or lime remains as well as grouts, paints and other stains (including oil, beverages, etc). The tiles become perfectly clean and the colors of the grouts that have been altered by the weather are renewed.
- **Chemical composition:** phosphoric acid solution and synthetic detergents.
- **Anionic surfactant content:** ≤5%.



**CONSUMPTION:** ≈ 1 L/4-5m<sup>2</sup>

| CODE / 1     | COLOR | PACKAGE | PCS./PAL.     | PRICE / L | UNIT PRICE |
|--------------|-------|---------|---------------|-----------|------------|
| 1.02.00.0072 | Blue  | 1 L     | 15 pcs./box   |           |            |
| 1.02.00.0192 | Blue  | 5 L     | 112 pcs./pal. |           |            |

## DRY 80/50 Uncoupling membrane

- Uncoupling membrane resistant to alkalis for waterproofing and tile adhesion on difficult to bond substrates.

| CODE / 3                                | PACKAGE                            | PCS./PAL.     | PRICE / m | PRICE / m <sup>2</sup> | UNIT PRICE |
|---|------------------------------------|---------------|-----------|------------------------|------------|
| 5.03.04.2520 Membrane Dry 80-0,8mm      | Roll 1,5 x 30m (45m <sup>2</sup> ) | 30 Rolls/pal. |           |                        |            |
| 5.03.04.2530 Membrane Dry 50-0,5mm      | Roll 1,2 x 30m (36m <sup>2</sup> ) | 30 Rolls/pal. |           |                        |            |
| 5.03.04.2540 Waterproofing strip joints | Roll 30m x 12,7cm                  | -             |           |                        |            |



# **THERMOKAPA**

External Thermal Insulation System Guide

# THERMOKAPA

Optimal durability in time and weather exposure

## Strength and endurance

Designed by **BAUER** to protect your building from any external influences for many decades.

## Protection against moisture & mold

High waterproofing & excellent building transpiration. Securing walls against water vapor condensation and mold.

## Maximum protection against cracking

The most effective renovation method for old facades with cracks or other problems, offering maximum elasticity, strength & protection for many decades by reducing structural element contractions and the appearance of new cracks.

## Energy saving

The most reliable investment with guaranteed profit for the entire building lifecycle.

1

### KAPA 11

Adhesives for fixing thermal plates to substrates, with a particularly high adhesion bonding for maximum safety

2

### BAUTHERM EPS 80

Expanded polystyrene ( $\lambda = 0,036 \text{ W / m} \cdot \text{K}$ ) and ( $\lambda = 0,03 \text{ W / m} \cdot \text{K}$ ) respectively. Certified for use in external thermal insulation systems

3

### KAPA 11 / ECOFLEX ORGANIC

Organic and inorganic reinforcing plasters for fiberglass impregnation

4

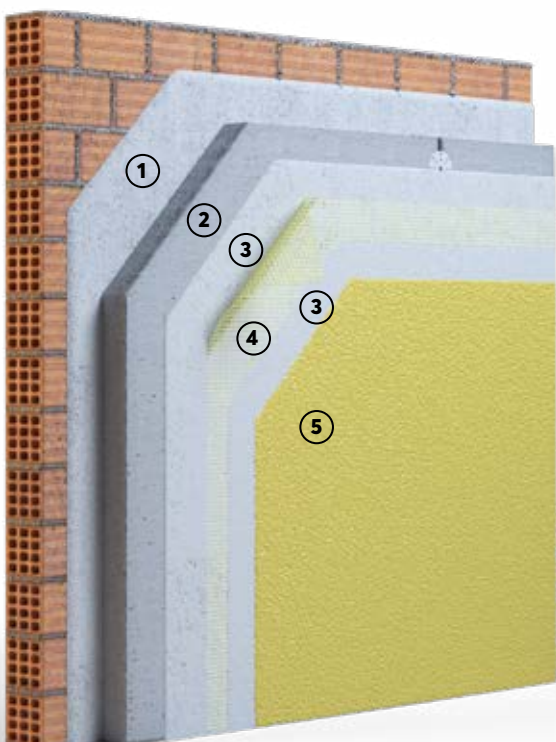
### BAUMESH 160/160 S

High strength reinforcement fiberglass mesh specially designed for **THERMOKAPA** system resistant to alkalis and moisture

5

### MONOKAPA F / MONOKAPA R / KAPASIL F / GRANULATO

Ready to use, decorative, organic, highly elastic acrylic renders with top resistance to cracking, moisture, dirt and fungus



Conforms to ETAG 004





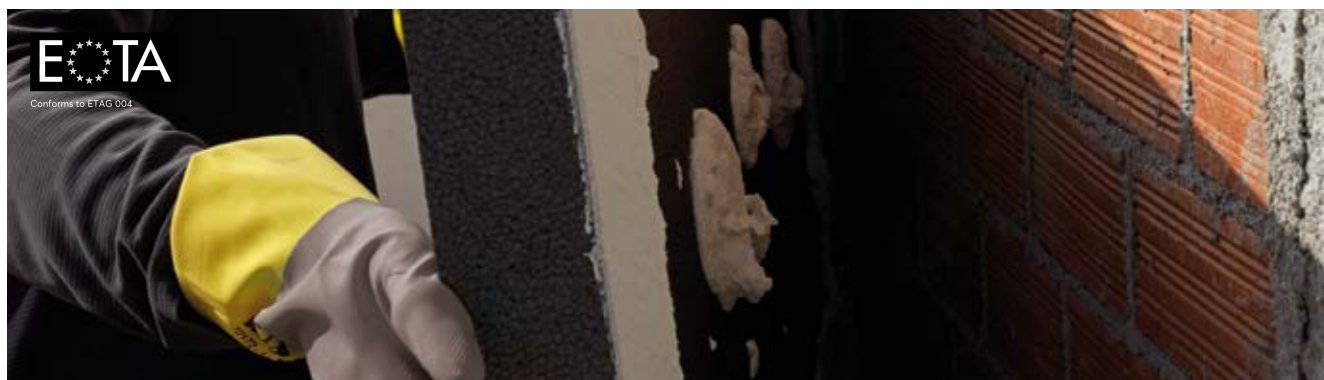
## Kapa 11

Polymer-modified, fiber-reinforced, cement-based adhesive and reinforcement coating, for installation of insulation plates of expanded polystyrene, mineral wool, etc.

- For building facades and floors.
- Kapa 11 offers superior adhesion, high resistance to shear stresses and guarantees adequate levels of bonding for many decades.
- The same material is used to cover insulation plates with the application of special fiberglass mesh as crack prevention, and as a reinforcement coating and substrate for topcoat renders in thermal insulation systems.
- No vertical slip and extended open time for safer application.



**CONSUMPTION:** ≈ 2 - 5 kg/m<sup>2</sup> as adhesive, ≈ 1,3 - 1,5 kg/m<sup>2</sup>/mm as reinforcement layer



| CODE / 1     | COLOR | PACKAGE | PCS./PAL.    | PRICE / KG | UNIT PRICE |
|--------------|-------|---------|--------------|------------|------------|
| 1.01.00.0370 | White | 25 kg   | 54 pcs./pal. |            |            |
| 1.01.00.0380 | Grey  | 25 kg   | 54 pcs./pal. |            |            |

## Ecoflex Organic

Fiber reinforced, 100% acrylic, highly flexible, crack prevention reinforcement coating for thermal insulation boards of expanded and extruded polystyrene, mineral wool, etc.

- Limited contribution to fire class **B-s2, d2** in accordance to **EN 13501-1**
- For building facades.
- **Ecoflex Organic** is applied in combination with **BauMesh 160/160S** special alkali-resistance fiberglass mesh, and offers superior adhesion, high mechanical resistance to impact forces and guarantees adequate levels of resistance for many decades.
- Ideal substrate for topcoat renders in thermal insulation systems.
- Characterized by high elasticity and moisture resistance.
- **Form:** organic based paste, ready to use.



**CONSUMPTION:** ≈ 1,5 kg/m<sup>2</sup>/mm as fiberglass mesh reinforcement layer



| CODE / 1     | COLOR | PACKAGE | PCS./PAL.    | PRICE / KG | UNIT PRICE |
|--------------|-------|---------|--------------|------------|------------|
| 1.01.00.0390 | White | 25 kg   | 24 pcs./pal. |            |            |

## Pro 101

### Primer for preparation of paints and colored renders

- With high penetrating ability.
- Offers an ideal substrate for colored plasters, acrylic renders and organic binder coatings such as **Kapalux, Monokapa, Kapsil, Granulato and Plaster fin.**
- Suitable for porous substrates such as render's base layer, concrete, bricks, aerated concrete, cementitious adhesives, cement mortars, etc.



**CONSUMPTION:** ≈ 0,1-0,2 kg/m<sup>2</sup>



| CODE / 2     | COLOR | PACKAGE           | PCS./PAL.     | PRICE / KG | UNIT PRICE |
|--------------|-------|-------------------|---------------|------------|------------|
| 1.03.01.0390 | White | 1 kg              | 15 pcs./box   |            |            |
| 1.03.01.0410 | White | 5 kg              | 112 pcs./pal. |            |            |
| 1.03.01.0400 | White | 20 kg             | 42 pcs./pal.  |            |            |
| 1.03.01.0430 | White | 10 kg (Container) | 44 pcs./pal.  |            |            |

## Kapagrip

### Primer consisting of synthetic resin and quartz sand

- Used for priming surfaces instead of render base coat, in order to increase adhesion.
- Ideal substrate for all acrylic renders and cement mortars.
- Suitable for indoor and outdoor use.
- **Form:** acrylic emulsion with quartz sand.



**CONSUMPTION:** ≈ 0,1-0,2 kg/m<sup>2</sup>



| CODE / 2     | COLOR   | PACKAGE | PCS./PAL.    | PRICE / KG | UNIT PRICE |
|--------------|---------|---------|--------------|------------|------------|
| 1.03.01.0610 | Red     | 1 kg    | 12 pcs./box  |            |            |
| 1.03.01.0660 | Red     | 5 kg    | 75 pcs./pal. |            |            |
| 1.03.01.0670 | Red     | 20 kg   | 24 pcs./pal. |            |            |
| 1.03.01.0630 | White   | 5 kg    | 75 pcs./pal. |            |            |
| 1.03.01.0640 | White   | 20 kg   | 24 pcs./pal. |            |            |
| 1.03.01.0650 | Colored | 20 kg   | 24 pcs./pal. |            |            |

**NEW!**

## Bautherm W

### Expanded polystyrene

- Certified plates for specific use in external thermal insulation systems, EPS 80 (ETICS) EPS 80 with CE mark in thicknesses of 3,5,6,7,10cm
- Coefficient of thermal conductivity:  $\lambda = 0,036 \text{ W / m} \cdot \text{K}$
- Resistance to fire: Class E
- Water vapor permeability resistance:  $\mu$  20-30



\* Available in various thicknesses and densities (EPS 100,200) upon request



| CODE / 5     | COLOR | THICKNESS | m <sup>2</sup> / PACK | PRICE / PACK | PRICE / m <sup>2</sup> |
|--------------|-------|-----------|-----------------------|--------------|------------------------|
| 5.03.04.5030 | White | 30 mm     | 9,6                   |              |                        |
| 5.03.04.5050 | White | 50 mm     | 6,0                   |              |                        |
| 5.03.04.5060 | White | 60 mm     | 4,8                   |              |                        |
| 5.03.04.5070 | White | 70 mm     | 4,2                   |              |                        |
| 5.03.04.5100 | White | 100 mm    | 3,0                   |              |                        |

## Bautherm G

### Graphite expanded polystyrene

- Certified plates for specific use in external thermal insulation, EPS 80 systems (ETICS) EPS 80 with CE mark in thicknesses of 3,5,6,7,10cm
- Coefficient of thermal conductivity:  $\lambda = 0,030 \text{ W / m} \cdot \text{K}$
- Resistance to fire: Class E
- Water vapor permeability resistance:  $\mu$  20-30



\* Available in various thicknesses and densities (EPS 100,150) upon request



| CODE / 5     | COLOR | THICKNESS | m <sup>2</sup> / Pack | PRICE / PACK | PRICE / m <sup>2</sup> |
|--------------|-------|-----------|-----------------------|--------------|------------------------|
| 5.03.04.5230 | Grey  | 30 mm     | 9,6                   |              |                        |
| 5.03.04.5250 | Grey  | 50 mm     | 6,0                   |              |                        |
| 5.03.04.5260 | Grey  | 60 mm     | 4,8                   |              |                        |
| 5.03.04.5270 | Grey  | 70 mm     | 4,2                   |              |                        |
| 5.03.04.5210 | Grey  | 100 mm    | 3,0                   |              |                        |

## Baumesh 160 / 160 S

High-strength fiberglass mesh with a protective coating of special polymers, highly resistant to alkaline environments

- For total or partial reinforcement of renders and waterproofing layers.
- Specially designed for external thermal insulation systems as well as for total or partial reinforcement of sealants (e.g. epoxy, polyurethane, acrylic resins and cement mortar and lime).
- Provides significant structural reinforcement and prevents cracking from thermal expansion and contraction.
- **Mesh width:** 4,5 x 4,5 mm ± 0.2
- **Weight (g /m²):** raw net 160 g /m² ± 5%
- **Coating (g /m²):** 26 g /m² ± 5%



| CODE / 3     | COLOR        | PACKAGE         | PCS./PAL.    | PRICE / m² | UNIT PRICE |
|--------------|--------------|-----------------|--------------|------------|------------|
| 5.03.04.2020 | Yellow 160   | 50m x 1m = 50m² | 30 pcs./pal. |            |            |
| 5.03.04.2120 | Yellow 160 S | 50m x 1m = 50m² | 33 pcs./pal. |            |            |

## ETICS Adhesion foam & Pistol cleaner

Low expansion foam for installing thermal insulation boards and pistol cleaner

- Hardens with atmospheric humidity and has extremely low expansion.
- Ideal for installing thermal insulation boards of **EPS** and **XPS**
- Excellent adhesion to all types of building materials.
- Easy and accurate application with the use of pistol.
- Resistant to ageing and moisture.

**NEW!**



| CODE / 3     | DESCRIPTION    | PACKAGE        | PCS. / BOX | UNIT PRICE |
|--------------|----------------|----------------|------------|------------|
| 5.01.05.0900 | Adhesion foam  | 750ml (Pistol) | 12 pcs.    |            |
| 5.01.05.0910 | Pistol cleaner | 500ml (Pistol) | 12 pcs.    |            |

## Fixtures for thermal insulation system



**NEW!**

| CODE / 3     | PRODUCT                   | PCS. / BOX   | PRICE / PCS. | PRICE BOX |
|--------------|---------------------------|--------------|--------------|-----------|
| 5.03.04.7100 | 8 / 110 (3-5cm Plate)     | 100 pcs./box |              |           |
| 5.03.04.7101 | 8 / 130_ (5-7cm Plate)    | 100 pcs./box |              |           |
| 5.03.04.7102 | 8 / 150_ (7-10cm Plate)   | 100 pcs./box |              |           |
| 5.03.04.7020 | 10 / 120_ (3-6cm Plate)   | 250 pcs./box |              |           |
| 5.03.04.7021 | 10 / 140_ (5-8cm Plate)   | 250 pcs./box |              |           |
| 5.03.04.7104 | for wood THERMOFIX 6H 100 | 100 pcs./box |              |           |
| 5.03.04.7105 | for metal THERMOFIX B 110 | 100 pcs./box |              |           |

### Complementary thermal insulation products

| CODE / 3           | PRODUCT                            | PCS. / BOX  | PRICE / PCS. | PRICE BOX |
|--------------------|------------------------------------|-------------|--------------|-----------|
| 5.03.04.7030       | Cornerbead PVC 10x15 2,5m          | 50 pcs./box |              |           |
| 5.03.04.7040       | Cornerbead with waterdrip PVC 2,5m | 20 pcs./box |              |           |
| 5.03.04.6100/10/30 | Starting guide AL 30-50-70mm 2,5m  | 10 pcs./box |              |           |
| 6.00.00.0011       | Color chart 1.000 Colors           | 1 pcs.      |              |           |
| 6.00.00.0016       | Color chart 260 Colors             | 1 pcs.      |              |           |

## Aquasil Flex

Flexible, two- component brushable cement based sealing mortar

- For complete and permanent waterproofing of concrete, brickwork, plasters.
- Ability to bridge surface cracks.
- Ideal for waterproofing surfaces that show or are expected to show hairline cracks due to thermal contractions-expansions or vibrations like surfaces to be covered with tiles on balconies, terraces, pools and bathrooms, inverted roof insulation, walls and floors of basements, tanks, wells, canals, etc.
- Endures positive and negative hydrostatic pressure and the surface remains water vapor permeable.
- Suitable for contact with drinking water.
- **Application thickness (2 coats):** ≤ 5mm and ≥ 2mm



**CONSUMPTION:** 2-4 kg/m<sup>2</sup>



| CODE / 2     | COLOR | PACKAGE     | PCS./PAL.                                  | PRICE / KG | UNIT PRICE |
|--------------|-------|-------------|--|------------|------------|
| 1.01.02.0170 | Grey  | 33 kg (A+B) | Bags 48 pcs./pal., Containers 48 pcs./pal. |            |            |

## Monokapa Flex

Ready to use, highly-flexible, decorative organic render

- Limitless color options and many final surface texture options.
- Monokapa render is 100% acrylic and offers excellent adhesion to all substrates as well as high resistance to sunlight, cracks, water and moisture, pollutants, algae and fungi.
- Allows for the transpiration of structural elements and is ideal as a final covering in external thermal insulation systems.
- **Form:** pasty acrylic render.
- **Available grain sizes:** Fine (F) 0,8/1,0/1,5/2,0mm Graffiato (R) 1,5/2,0mm



**CONSUMPTION:** 0,8 mm ≈ 1,44kg /m<sup>2</sup> - 1,0 mm ≈ 1,8 kg/m<sup>2</sup> - 1,5mm ≈ 2,7 kg/m<sup>2</sup> - 2,0 mm ≈ 3,0 kg/m<sup>2</sup>



| CODE / 1       | COLOR          | GRANULOMETRY                                 | PACKAGE | PCS. /PAL.   | PRICE / KG | UNIT PRICE |
|----------------|----------------|--|---------|--------------|------------|------------|
| 1.01.01.5010   | White          | 0,8 / 1,0 / 1,2 / 1,5 / 2,0 mm F<br>2,0 mm R | 25 kg   | 24 pcs./pal. |            |            |
| 1.01.01.5000   | 1.000 colors   | 0,8 / 1,0 / 1,2 / 1,5 / 2,0 mm F<br>2,0 mm R | 25 kg   | 24 pcs./pal. |            |            |
| 1.01.01.4500.0 | White / colors |  | 3 kg    |              |            |            |

## Kapasil

Ready to use, silicon-based, water repellent and self-cleaning organic render

- Limitless color options.
- Provides excellent adhesion to all substrates and extremely high resistance to water, moisture, sunlight, cracks, pollutants, algae and fungi.
- Allows for the transpiration of structural elements and is ideal as a final covering in external thermal insulation systems.
- Non combustible class **A2-s1, d2** in accordance to **EN 13501-1**
- **Form:** pasty silicone acrylic render.
- **Available grain size:** Fine (F) 1,0/1,5 mm.



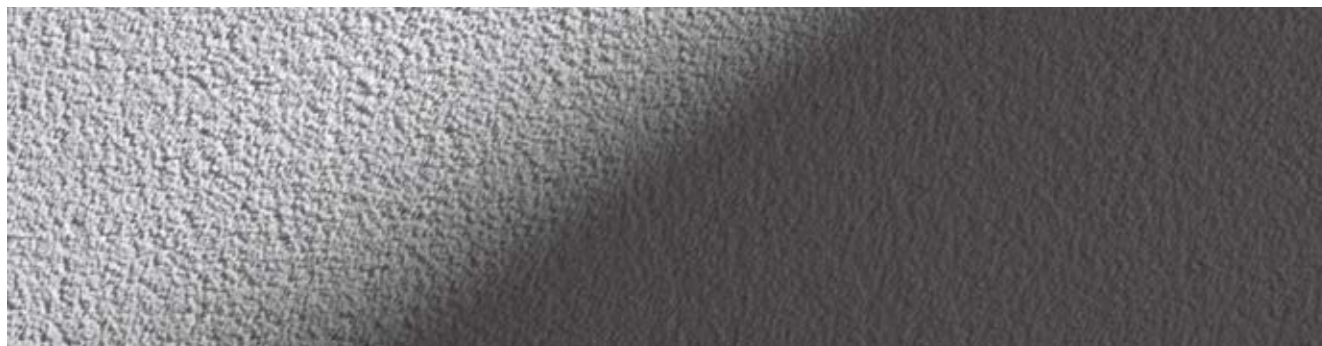

**CONSUMPTION:** 1,0mm ≈ 1,8 kg/m<sup>2</sup> - 1,5mm ≈ 2,7kg/m<sup>2</sup>



| CODE / 1       | COLOR          | GRANULOMETRY   | PACKAGE | PCS. /PAL.   | PRICE / KG | UNIT PRICE |
|----------------|----------------|----------------|---------|--------------|------------|------------|
| 1.01.01.2250   | White          | 1,0 / 1,5 mm F | 25 kg   | 24 pcs./pal. |            |            |
| 1.01.01.2250.1 | 1.000 colors   | 1,0 / 1,5 mm F | 25 kg   | 24 pcs./pal. |            |            |
| 1.01.01.2200.0 | White / colors |                | 3 kg    |              |            |            |

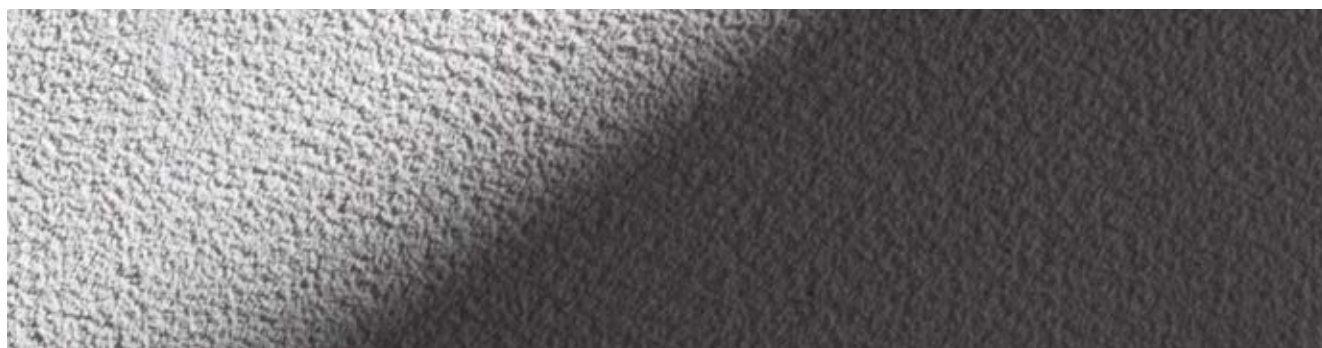
## Granulometry of Monokapa Flex & Kapasil

0 cm    5 cm    10 cm



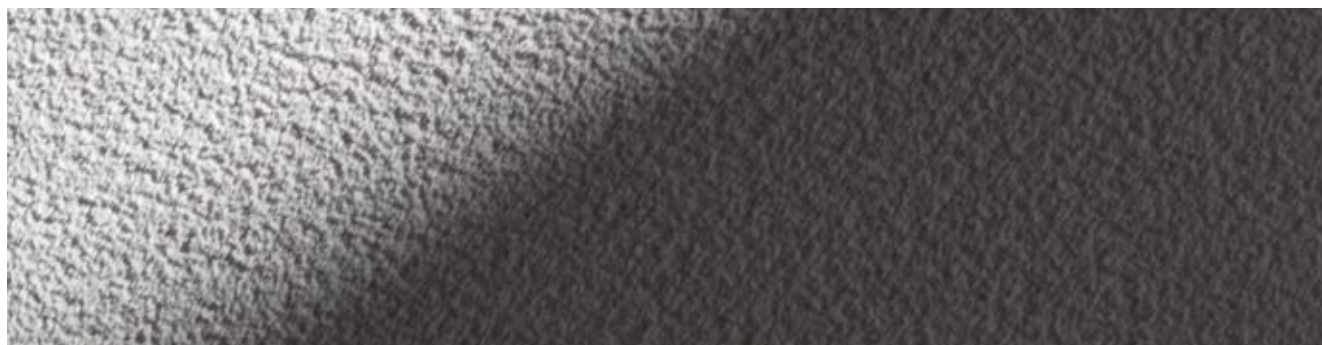
MONOKAPA FLEX **0,8 mm F**

---



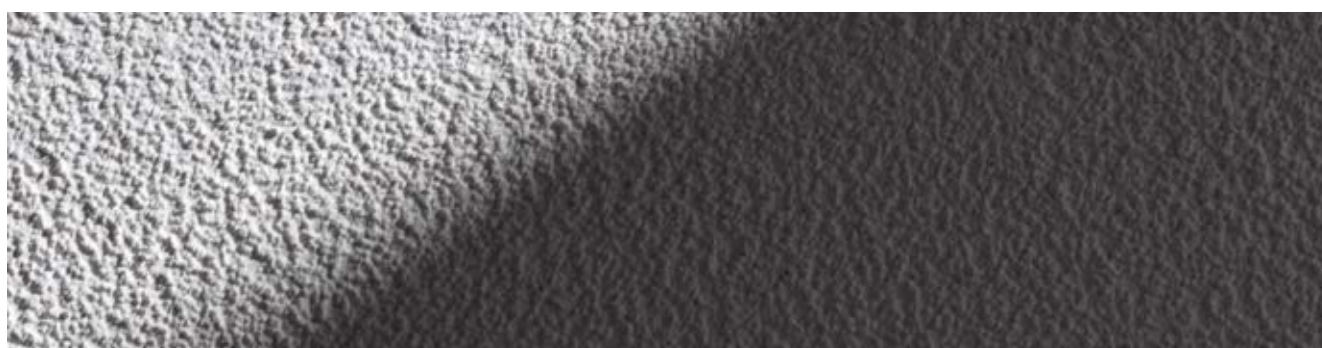
MONOKAPA FLEX **1 mm F** / KAPASIL **1 mm F**

---



MONOKAPA FLEX **1,2 mm F**

---



MONOKAPA FLEX **1,5 mm F** / KAPASIL **1,5 mm F**

---

# Granulato

Ready to use acrylic render with special colored quartz aggregates

- With specially classified granulometry to create a rough decorative surface in many color options.
- Ideal for both indoor and outdoor surface decorations.
- Suitable for exterior building facades, even for high-rise buildings exposed to large quantities of rain water.
- UV radiation resistance, high elasticity, full water repellency and excellent transpiration properties
- **Compatible substrates:** concrete, mortar, gypsum plasterboard, wood, metal, MDF, etc.
- **Form:** pasty render of quartz.



**CONSUMPTION:** ≈ 3,5 - 4,0 kg/m<sup>2</sup>



| CODE / 1     | COLOR     | PACKAGE | PCS./PAL.    | PRICE / KG | UNIT PRICE |
|--------------|-----------|---------|--------------|------------|------------|
| 1.01.01.9010 | 12 colors | 23 kg   | 24 pcs./pal. |            |            |

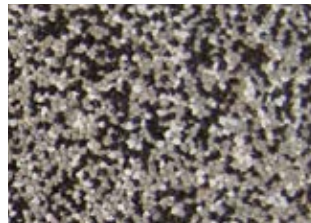
## Granulato Colors



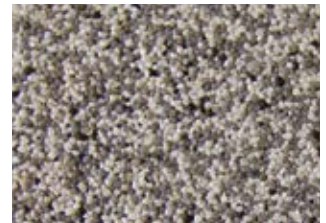
017



024



031



093



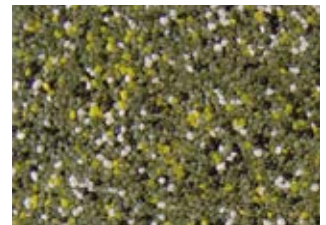
123



307



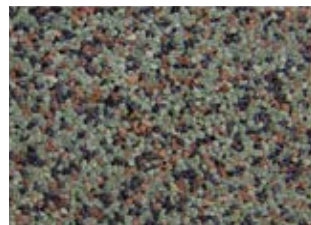
147



260



291



277



130



284





# **Renders & Plasters**

## Malta Star

### Reinforced, waterproof, white top-coat render

For interior and exterior applications. Applied on brick walls and concrete that have been properly prepared with base coat render. It offers excellent adhesion, leading resistance to extreme climatic conditions and excellent component transpiration.

#### Malta Star

**Form:** Cementitious dry mortar with maximum grain size 1,20 mm (as the traditional marble render).

**Maximum application thickness:** 5 mm

**CONSUMPTION:** ≈ 7 kg / m<sup>2</sup> / 5mm

#### Plaster Graffiato

**Form:** Cementitious dry mortar with maximum grain size 3 mm.

**Maximum application thickness:** 3-4 mm.

**CONSUMPTION:** ≈ 6 kg / m<sup>2</sup> / 4mm

**NEW!**



*\*Can be produced in many colors upon request (minimum quantity 1.500 kg)*



| CODE / 1     | COLOR           | PACKAGE | PCS./PAL.    | PRICE / KG | UNIT PRICE |
|--------------|-----------------|---------|--------------|------------|------------|
| 1.01.01.1030 | White           | 25 kg   | 60 pcs./pal. |            |            |
| 1.01.01.1010 | White Graffiato | 25 kg   | 60 pcs./pal. |            |            |

## Malta Plus

### Reinforced polymer modified water-repellent, white top coat render

- For indoor and outdoor applications.
- Applied on brick walls and concrete that have been properly prepared with base coat render.
- It offers excellent adhesion, leading resistance to extreme climatic conditions and excellent component transpiration.
- Applied by hand or rendering machine with excellent workability.
- **Maximum grain:** 1.30 mm (as the traditional marble render).
- **Maximum application thickness:** 5mm

**CONSUMPTION:** ≈ 7 kg / m<sup>2</sup> / 5mm

*\*Can be produced in many colors upon request (minimum quantity 1.500 kg)*

**NEW!**



| CODE / 1     | COLOR | PACKAGE | PCS./PAL.    | PRICE / KG | UNIT PRICE |
|--------------|-------|---------|--------------|------------|------------|
| 1.01.01.1040 | White | 25 kg   | 60 pcs./pal. |            |            |

## Malta Uno

### One-coat, reinforced white render

- For interior and exterior applications.
- Applied in a maximum thickness of 3cm on walls made of bricks and concrete that have been properly prepared with base coat render or Kapagrip primer.
- It offers excellent adhesion, leading resistance to extreme climatic conditions and excellent component transpiration.
- Applied by hand or rendering machine with excellent workability.
- **Maximum grain:** 1.30 mm (as the traditional marble render).
- **Maximum application thickness:** 3cm

**CONSUMPTION:** ≈ 13 kg/m<sup>2</sup>/cm

\*Available in many colors upon request (minimum quantity 1.500 kg)

**NEW!**



| CODE / 1     | COLOR | PACKAGE | PCS./PAL.    | PRICE / KG | UNIT PRICE |
|--------------|-------|---------|--------------|------------|------------|
| 1.01.01.1020 | White | 25 kg   | 60 pcs./pal. |            |            |

## Plaster Fix

### Fast setting, white resinous plaster for a wide variety of repairs

- For repairing damaged corners, filling cracks, shaping broken plasters and restoring damages caused by plumbers, carpenters, electricians, etc.
- **Advantages:** Quick plaster repairs - excellent workability - high mechanical strength -excellent adhesion - no visible splices.
- **Form:** Cementitious dry mortar with maximum grain size 1,30mm (as the traditional marble plaster).

**CONSUMPTION:** ≈ 15kg/m<sup>2</sup>/cm layer thickness



| CODE / 1     | COLOR | PACKAGE | PCS./PAL.                | PRICE / KG | UNIT PRICE |
|--------------|-------|---------|--------------------------|------------|------------|
| 1.01.01.1150 | White | 5 kg    | 4 pcs./box 200 pcs./pal. |            |            |
| 1.01.01.1050 | White | 25 kg   | 48 pcs./pal.             |            |            |

## Bau - Resina

### Microcement coating of unique aesthetic result

- Unique aesthetic wall and floor lining material.
- Thin thickness (2-4mm), cement base, and quartz in various colors to create a stable high-strength concrete surface finish.
- Environmentally friendly natural product free of solvents and other harmful volatile substances.
- Soft and smooth finish making it ideal for modern and minimalist spaces.
- Applies to all types of hard surfaces.

To enhance adhesion and elasticity you can optionally use, instead of water, component B (resin) which is packaged in predetermined mixing ratio cartridges.



**CONSUMPTION:** ≈ 3,5kg / m<sup>2</sup> for two layers ≈ 1,5mm / layer



| CODE / 1     | COLOR | PACKAGE | PRICE / KG | UNIT PRICE |
|--------------|-------|---------|------------|------------|
| 1.01.01.3000 | White | 25 kg   |            |            |

## Baucolor

### Mineral oxide, inorganic powder pigment

- For coloring **BAU RESINA** microcement mortar.
- For coloring coatings, concrete and cement mortars
- Add to dry cement mix with aggregate before mixing it with water.
- For indoor and outdoor areas, grouting and pavers.



| CODE / 3     | COLOR                | PACKAGE                      | PCS. / BOX | UNIT PRICE |
|--------------|----------------------|------------------------------|------------|------------|
| 1.14.00.1310 | K Ocher              | 0,25 kg (5 pcs. of 50g bags) | 9 pcs./box |            |
| 1.14.00.1320 | B Black              | 0,25 kg (5 pcs. of 50g bags) | 9 pcs./box |            |
| 1.14.00.1330 | L Light brown No.610 | 0,25 kg (5 pcs. of 50g bags) | 9 pcs./box |            |
| 1.14.00.1340 | D Dark brown No.660  | 0,25 kg (5 pcs. of 50g bags) | 9 pcs./box |            |
| 1.14.00.1350 | G Green              | 0,25 kg (5 pcs. of 50g bags) | 9 pcs./box |            |
| 1.14.00.1360 | C Blue               | 0,25 kg (5 pcs. of 50g bags) | 9 pcs./box |            |

**NEW!**

## Bau - Resina Component B

### Synthetic emulsion for microcement coating

- Enhancement of adhesion and elasticity
- Containers with predetermined mixing ratio



**CONSUMPTION:** ≈ 4 kg (A+B) / m<sup>2</sup> for two layers ≈ 1,5mm / layer

| CODE / 1       | COLOR | PACKAGE | PRICE / KG | UNIT PRICE |
|----------------|-------|---------|------------|------------|
| 1.01.01.3990.1 | White | 8 kg    |            |            |

\* 36 color options available (see p. 62)

## Basil

### Acrylic varnish for waterproofing microcement mortar

- Water repellent matt transparent impregnation without solvents for complete waterproofing and stabilization of micro cement mortar surfaces.
- It does not cause color changes.
- Ensures good water vapor permeability of substrates.
- Protects application surfaces from the effects of pollutants.
- Easy and fast application.
- Very high penetration and water repellency.
- Suitable for interior and exterior surfaces.



**CONSUMPTION:** ≈ 0,20-0,30 kg / m<sup>2</sup>



| CODE / 2     | COLOR      | PACKAGE | PRICE / KG | UNIT PRICE |
|--------------|------------|---------|------------|------------|
| 1.03.01.0160 | Trasparent | 1 kg    |            |            |
| 1.03.01.0170 | Trasparent | 5 kg    |            |            |
| 1.03.01.0180 | Trasparent | 20 kg   |            |            |

## Hardox PU Clear Coat

### Transparent polyurethane 2 component varnish, matt or glossy

- Water repellent, matt transparent aliphatic agent of two components, for complete waterproofing of micro cement mortar surfaces, and protection of metal or stone surfaces as well as UV protection for Hardox P25 pool paint.
- It does not turn yellow. Suitable for interior and exterior surfaces.



**CONSUMPTION:** ≈ 70-150 g/m<sup>2</sup>



| CODE / 7            | COLOR                     | PACKAGE | PRICE / KG | UNIT PRICE |
|---------------------|---------------------------|---------|------------|------------|
| 1.01.03.9120 / 9140 | Transparent matt or gloss | 3 kg    |            |            |
| 1.01.03.9130 / 9150 | Transparent matt or gloss | 9 kg    |            |            |

## Bau Resina Colors

The final color is easily achieved by adding the proper amount of pigments to the white mortar. The codes listed in the chart display the color choice of pigments and the number of standard packages (bags of 50g) to be mixed with **25kg** of white mortar **Bau Resina**.

**PIGMENT CODES**      **B** - BLACK      **L** - LIGHT BROWN      **G** - GREEN  
                                  **K** - OCHER      **D** - DARK BROWN      **C** - BLUE

*E.g. Code B4-C1 indicates the use of 4 packs of 50g black pigment (B) and 1 pack of 50g blue pigment (C).*

|                    |                    |                    |                 |                 |                 |
|--------------------|--------------------|--------------------|-----------------|-----------------|-----------------|
|                    |                    |                    |                 |                 |                 |
| <b>B4-K2-L4</b>    | <b>K4-D5-L1</b>    | <b>K4-D3-L1</b>    | <b>B3-K1-G5</b> | <b>B3-K2-G5</b> | <b>B1-K1-G2</b> |
|                    |                    |                    |                 |                 |                 |
| <b>B8-K1-L8</b>    | <b>B5-K2-D2</b>    | <b>B1-K1-D1-G1</b> | <b>B5-C1</b>    | <b>B4</b>       | <b>B2</b>       |
|                    |                    |                    |                 |                 |                 |
| <b>B4-K4-L4</b>    | <b>B2-K1-L2</b>    | <b>B1-K1-L1</b>    | <b>B3-D3</b>    | <b>B2-D2</b>    | <b>B2-L1</b>    |
|                    |                    |                    |                 |                 |                 |
| <b>B4-K1-L1-G4</b> | <b>B2-K1-L1-G2</b> | <b>B1-K2</b>       | <b>B5</b>       | <b>B4-C1</b>    | <b>B5-G1</b>    |
|                    |                    |                    |                 |                 |                 |
| <b>B4-K2</b>       | <b>B1-K1-D1-G3</b> | <b>B1-K1</b>       | <b>B2-G3</b>    | <b>B2-G2</b>    | <b>B1-G2</b>    |
|                    |                    |                    |                 |                 |                 |
| <b>B5-K1-G2</b>    | <b>B2-K1-G2</b>    | <b>B1-K1-G1</b>    | <b>B8-K1-L5</b> | <b>B1-L1</b>    | <b>B1-D1</b>    |

**Note:**

The colors presented herein may slightly vary from the final result due to paper printing limitations.



# **Industrial Flooring**

NEW!



## Hardox Level Fast

Ready to use mortar for floor screeds with controlled shrinkage, normal-setting and fast drying (lay ceramic tiles after 24h)

- Excellent adhesion to concrete and high mechanical strength.
- Ideal for filling, leveling and creating slopes on floors that are to be covered and the completion of the installation is required to be done in a short time.
- Tiles installation in 24h, wood and resilient floor in 4 days.
- Smooth final surface.
- Suitable for indoor and outdoor applications.
- **Application thickness:** 10-80mm per layer.
- Classification in accordance to **EN 13813** as **CT – C30 – F6**

**CONSUMPTION:** ≈ 18-20 Kg/m<sup>2</sup>/cm per layer



| CODE / 1     | COLOR | PACKAGE | PCS./PAL.    | PRICE / KG | UNIT PRICE |
|--------------|-------|---------|--------------|------------|------------|
| 1.01.03.0020 | Grey  | 25 kg   | 60 pcs./pal. |            |            |

## Hardox Mix

NEW!



Special hydraulic binder with normal setting, fast drying (4 days) and controlled shrinkage for floor screeds

- Hydraulic binder that replaces the cement in floor screeds.
- Ideal for filling, leveling and creating slopes on floors that are to be covered and the completion of the installation is required to be done in a short time.
- Installation of coating between 1-4 days depending on the type of coating.
- Suitable for indoor and outdoor applications.
- Excellent adhesion to concrete and high mechanical strength.
- **Application thickness:** 20-80mm per layer.

**CONSUMPTION:** ≈ 2,0-3,0 Kg/m<sup>2</sup>/cm per layer



| CODE / 1     | COLOR | PACKAGE | PCS./PAL.    | PRICE / KG | UNIT PRICE |
|--------------|-------|---------|--------------|------------|------------|
| 1.01.03.0080 | Grey  | 20 kg   | 48 pcs./pal. |            |            |



## Hardox Flu-300

### Fast-setting self-leveling flooring screed

- With prolonged workability and compensated shrinkage.
- Ideal for layers **2-30mm**
- Used for smoothing and leveling uneven floors, with fast setting and excellent workability, especially indoors.
- Can be covered with carpet, marble, natural stone, parquet, wooden floors, rubber, PVC, resins, textile coating, ceramic tiles of all types.
- Can remain as final surface on domestic floors such as warehouses, basements and attics.
- Classified as a cement-based floor covering material for interior use type **CT-C35-F10-AR2** according to the European standard **EN 13813**



**CONSUMPTION:** ≈ 16 kg/m<sup>2</sup>/cm



| CODE / 1     | COLOR | PACKAGE | PCS./PAL.    | PRICE / KG | UNIT PRICE |
|--------------|-------|---------|--------------|------------|------------|
| 1.01.03.0030 | Grey  | 25 kg   | 48 pcs./pal. |            |            |

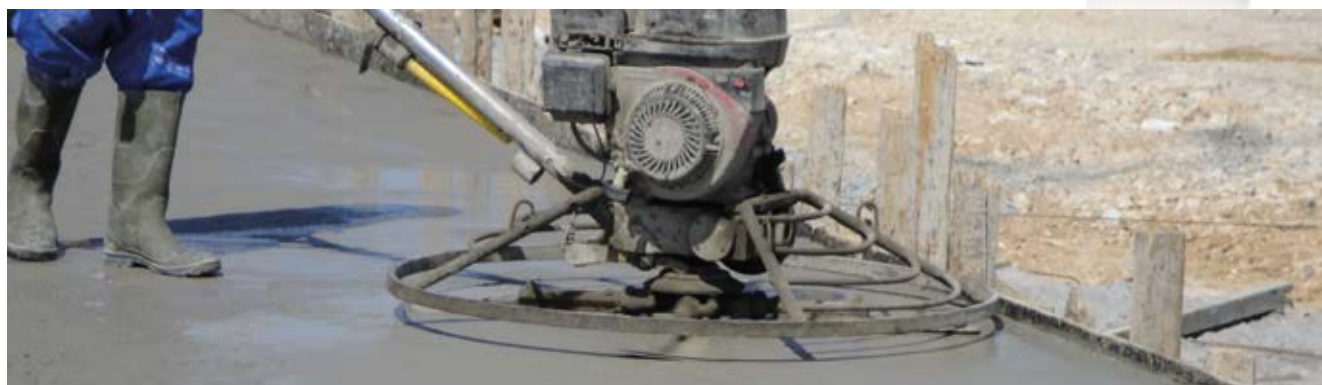
## Hardox Extra

### Quartz sand cement-based surface hardener for high quality industrial concrete floors

- Ideal for extremely demanding surfaces in mechanical strength and abrasion resistance.
- **Application examples:** Industrial floors, food industry facilities, flooring/surfaces with increased heavy vehicle traffic, loading and unloading areas, ramps, warehouses, parking lots, sidewalks, machine shops, shopping malls, etc.



**CONSUMPTION:** ≈ 3-5 kg/m<sup>2</sup>



| CODE / 1     | COLOR       | PACKAGE | PCS./PAL.    | PRICE / KG | UNIT PRICE |
|--------------|-------------|---------|--------------|------------|------------|
| 1.01.03.1000 | Grey        | 25 kg   | 60 pcs./pal. |            |            |
| 1.01.03.1020 | Terracotta* | 25 kg   | 60 pcs./pal. |            |            |
| 1.01.03.1010 | Ocher*      | 25 kg   | 60 pcs./pal. |            |            |
| 1.01.03.1040 | White*      | 25 kg   | 60 pcs./pal. |            |            |

\* Available for orders upon request (600kg minimum quantity)

## Bau Cure

### Polymer modified curing agent for fresh concrete

- Protects fresh concrete from quick evaporation of mixing water.
- Decreases the setting shrinkage of concrete.
- Ensures that concrete will achieve the anticipated strength.
- Reduces surface-dusting, after the concrete has set.
- Reduces the possibility of showing hair cracks.

**CONSUMPTION:** ≈ 0.15 - 0.20 Kg/m<sup>2</sup> \* Consumption depends on the environmental conditions.

NEW!



| CODE / 1     | COLOR            | PACKAGE         | PCS./PAL.    | PRICE / KG | UNIT PRICE |
|--------------|------------------|-----------------|--------------|------------|------------|
| 1.03.01.0600 | Trasparent (dry) | 20 kg           | 42 pcs./pal. |            |            |
| 1.03.01.0590 | Trasparent (dry) | 120 kg (Barrel) | 5 pcs./pal.  |            |            |

## Hardox S36

### Concrete hardening impregnation

- Water-based impregnation emulsion, based on acrylic resins and silicates.
- Improves surface strength and reduces dust emission.
- Enhances surface absorbency in concrete floors.

**CONSUMPTION:** ≈ 0.15 - 0.25 Kg/m<sup>2</sup> \* Consumption depends on the substrates absorbency and surface etc.

NEW!



| CODE / 1     | COLOR            | PACKAGE | PCS./PAL.    | PRICE / KG | UNIT PRICE |
|--------------|------------------|---------|--------------|------------|------------|
| 1.01.03.9110 | Trasparent (dry) | 20 kg   | 42 pcs./pal. |            |            |

## Hardox 11

Two-component, solvent free, transparent epoxy primer for industrial flooring

- For priming concrete surfaces to be covered with epoxy coatings.
- As a leveling mortar with quartz sand.
- For absorbent and non-absorbent inorganic concrete substrates, cement mortars, etc.
- **Viscosity:** 490 MPa x s
- **Workability time:** Temperature / time + 10°C → ≈65 min, + 20°C → ≈40 min, +30°C → ≈18 min.



**CONSUMPTION:** ≈ 200-250 g/m<sup>2</sup>



| CODE / 7     | COLOR       | PACKAGE    | PCS./PAL.    | PRICE / KG | UNIT PRICE |
|--------------|-------------|------------|--------------|------------|------------|
| 1.01.03.9010 | Transparent | 9 kg (A+B) | 48 pcs./pal. |            |            |

## Hardox 01 S

Two-component, solvent based, transparent epoxy primer for industrial flooring

- For priming concrete surfaces to be covered with epoxy layers
- For absorbent and non-absorbent inorganic concrete substrates, cement mortars, etc.



**CONSUMPTION:** ≈ 200-300 g/m<sup>2</sup>



| CODE / 7     | COLOR | PACKAGE    | PCS./PAL.    | PRICE / KG | UNIT PRICE |
|--------------|-------|------------|--------------|------------|------------|
| 1.01.03.9030 | Grey  | 8 kg (A+B) | 48 pcs./pal. |            |            |

## Aqua Primer

Two-component, water-based, transparent epoxy primer for industrial flooring

- For priming concrete surfaces to be covered with epoxy coatings and as substrate of **Monoflex PU** in concrete with lightweight moisture.
- For absorbent and non-absorbent inorganic concrete substrates, cement mortars, etc.



**CONSUMPTION:** ≈ 0,2-0,3 kg/m<sup>2</sup>



| CODE / 7     | COLOR       | PACKAGE    | PRICE / KG | UNIT PRICE |
|--------------|-------------|------------|------------|------------|
| 1.01.03.9080 | Pale Yellow | 8 kg (A+B) |            |            |

## Hardox P25

Colored epoxy floor paint system with solvents

- Suitable for fountains and swimming pools.
- **Chemical basis: (A) component:** epoxy resin, **(B) component:** hardener.
- **Colours:** RAL 5012, RAL 9003, \*RAL 1014, RAL 1015, RAL 7035, RAL 7040.



**CONSUMPTION:** ≈ 300 g/m<sup>2</sup> in two layers \*Can be produced in many colors upon request (minimum quantity 100 kg)



| CODE / 7     | COLOR  | PACKAGE | PRICE / KG | UNIT PRICE |
|--------------|--|---------|------------|------------|
| 1.01.03.7090 | RAL 5012, RAL 9003, *RAL 1014, *RAL 1015, *RAL 7035, *RAL 7040 | 9 kg    |            |            |

## Hardox 360

### Self-leveling solvent-free epoxy coating for industrial floors

- For use as self leveling system in 2-3mm by adding 1/1 quartz sand.
- For use as a non-slip 3-4mm coating or a resin mortar.
- Ideal for highly demanding installation requirements in mechanical strength and abrasion, for liquid processing areas.
- Application examples: Production and storage areas, food and beverage industries, parking lots, etc.
- **Chemical basis: (A) component:** Epoxy resin **(B) component:** hardener.



**CONSUMPTION:** ≈ 0,8 kg/m<sup>2</sup>/mm



| CODE / 7     | COLOR  | PACKAGE     | PCS./PAL.    | PRICE / KG | UNIT PRICE |
|--------------|--|-------------|--------------|------------|------------|
| 1.01.03.4010 | RAL 7032, RAL 7035, RAL 7040, RAL 1014, RAL 1015, RAL 5012 | 20 kg (A+B) | 18 pcs./pal. |            |            |

## Hardox P22

### Colored epoxy floor paint system without solvents

- Ideal for highly demanding installation requirements in mechanical strength and abrasion, for liquid processing areas.
- **Application examples:** Production and storage areas, food and beverage industries, parking lots, etc.
- **Chemical basis: (A) component:** Epoxy resin **(B) component:** hardener.



**CONSUMPTION:** ≈ 300-500 g/m<sup>2</sup>



| CODE / 7     | COLOR  | PACKAGE     | PCS./PAL.    | PRICE / KG | UNIT PRICE |
|--------------|--|-------------|--------------|------------|------------|
| 1.01.03.6000 | RAL 7032, RAL 7035, RAL 7040, RAL 1014, RAL 1015, RAL 5012 | 20 kg (A+B) | 18 pcs./pal. |            |            |

## Hardox PU Clear Coat

Transparent polyurethane 2 component varnish, matt or glossy

- Water repellent, matt transparent aliphatic agent of two components, for complete waterproofing of micro cement mortar surfaces, and protection of metal or stone surfaces as well as UV protection for Hardox P25 pool paint.
- It does not turn yellow. Suitable for interior and exterior surfaces.



**CONSUMPTION:** ≈ 70-150 g/m<sup>2</sup>



| CODE / 1            | COLOR                     | PACKAGE | PRICE / KG | UNIT PRICE |
|---------------------|---------------------------|---------|------------|------------|
| 1.01.03.9120 / 9140 | Transparent matt or gloss | 3 kg    |            |            |
| 1.01.03.9130 / 9150 | Transparent matt or gloss | 9 kg    |            |            |

## Hardox Stone Carpet

Transparent, new generation polyurethane based binder without solvents for decorative aggregates in applications of resinous surfaces and floors

- 1K Water based system: ready to use, no potlife issues. Natural look for stones (Wet & Dry)
- Fast cure system 30 minutes. Could walk on floor system after 1 hr.
- No issue with rain 30 minutes after application.
- Excellent adhesion on concrete, fiber cement, wood, rubber. Use only 9% resin and 91% stones
- Excellent water resistance, excellent gloss and color retention on water immersion
- Simple pack system, only stone and formulated resin packed separately in bags
- Could be applied DIY, no need for skilled labor. Safe and ECO friendly coating system
- No yellowing vs epoxy and some PUD's.



**CONSUMPTION:** ≈ 10%-20% by weight of aggregates.



| CODE / 1     | COLOR       | PACKAGE | PRICE / KG | UNIT PRICE |
|--------------|-------------|---------|------------|------------|
| 1.01.03.2220 | Transparent | 10 kg   |            |            |
| 1.01.03.2210 | Transparent | 3 kg    |            |            |

# Colored painted and natural granules

For the creation of decorative Stone Carpet surfaces

- They are used in combination with the transparent polyurethane binding resin Hardox Stone Carpet for the creation of surfaces with colored aggregates.



1/45



1/52



1/64



3/26



5/3



6/45



7/3



7/4



8/2



8/11



9/2



9/3



10/15



1019

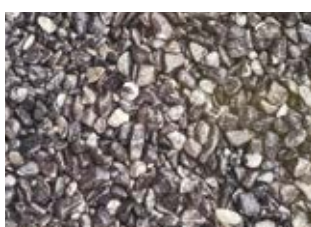


6013

| PCS.                | PACKAGE | SIZE                       | UNIT PRICE |
|---------------------|---------|----------------------------|------------|
| 15 colored granules | 25 kg   | Particle size 1,0 - 1,6 mm |            |



Giallo Mori



Grigio Carnico



Nero Ebano



Verde Alpi

| PCS.                     | PACKAGE | SIZE                       | UNIT PRICE |
|--------------------------|---------|----------------------------|------------|
| 4 natural stone granules | 25 kg   | Particle size 1,5 - 3,0 mm |            |











The materials mentioned above are part of the entirety of the materials produced by the company, in line with its commercial policy.

Information regarding packaging, box and pallet staking are only exemplary; they can be modified without prior notice.

Technical details, properties, recommendations and information on **BAUER** products are supplied in good faith. They are based on the company's research and experience, provided that they are stored and applied onto normal conditions. As the method of using materials as well as project and environment conditions are beyond the control of the company in each individual application setting, the user of the product is held solely responsible for the result of application. No responsibility under any legitimate relationship can be substantiated against the company, based on the information set out herein. Product users are advised to refer to the latest revision of the technical manuals available.





**BAUER**

**B B T**™ | BAUER BUILDING  
TECHNOLOGIES

**INDUSTRIAL AREA OF MEGARA**  
19 100 Attica, Greece

info@netbauer.com  
T (+30) 210 57 44 222, F (+30) 210 57 40 777

[www.netbauer.com](http://www.netbauer.com)

