



# Product Catalogue



# Construction products for the building industry



# BAUER

OUR LEGACY IS NOT SOMETHING WE LEAVE BEHIND  
BUT THE FOUNDATION WE BUILD UPON





Frankfurt, Reg. No 312310 QM  
Qualitätsmanagementsystem  
Zertifiziert nach DIN EN ISO 9001



Frankfurt, Reg. No 312310 UM  
Qualitätsmanagementsystem  
Zertifiziert nach DIN EN ISO 14001

# Professional confidence and reliability

Our products are always designed focused on the real needs of people and the environment



# BAUER

## OUR AIM IS SIMPLE. INSTEAD OF SUPERFLUOUS FEATURES, WE OPT FOR PROVIDING REAL SOLUTIONS

We believe that people cannot be forced to adapt to the complex requirements of technology: on the contrary, technology should match people's requirements. Our experience and expertise are supported by world – class industrial facilities for the production and control of our products. **BAUER** products are designed and developed meticulously, paying great attention to detail, and are produced in modern, fully automated facilities, applying in all stages of production such as design, production and handling, the certified quality assurance system employed by the German organization **Deutsche Gesellschaft für Qualität**.





An idea stands behind every  
**BAUER** product or service



# BAUER

B B T™ | BAUER BUILDING TECHNOLOGIES

## BAUER'S REPUTATION IS BASED ON DEVELOPING ITS OWN UNIQUE TECHNOLOGIES, CREATIVE SOLUTIONS AND PASSION FOR PERFECTION

Our legacy is the common denominator that has been connecting **BAUER** products for over 50 years. We make a difference by continuously honoring our founding values and constantly desiring to challenge conventional standards. Responsibility, honesty and passion for innovation are an integral part of our identity, not a separate entity in the broader context of our proposal. We have built our company strategy around our vision and values and have ensured that this is displayed in every company expression. Every decision is made and secured with full awareness of our responsibilities. Our production process ensures a safe and

healthy environment for our employees, associates and the local communities in which we operate. Offsets and concessions regarding our values are not negotiable. The key to success is our people. They are passionate about quality and aspire to the highest levels of what they do, paying attention to every detail. That is why we are able to offer our customers products and services of exceptional quality. **BAUER** has the skills and experience to directly address the needs of professionals, technicians, manufacturers or resellers looking for the most cost-effective solutions in service, validity, and speed.



<b>AQUABLOCK</b>	36	<b>HARDOX 01 S</b>	67	<b>SUPERLAT LATEX</b>	16/26
<b>AQUASIL</b>	10	<b>HARDOX 11</b>	67	<b>TETRABLOCK 3,0 G</b>	21
<b>AQUASIL FLEX</b>	10/53	<b>HARDOX 360</b>	69	<b>TETRABLOCK 4,5 PM</b>	21
<b>AQUA TAPE</b>	24	<b>HARDOX EXTRA</b>	65	<b>ULTRA ACRYLIC</b>	39
<b>AQUA PRIMER</b>	14/68	<b>HARDOX P25</b>	68	<b>ULTRA FAST</b>	34
<b>ARMOSEAL</b>	33	<b>HARDOX PU CLEAR COAT</b>	62/70	<b>POLYURETHANE FOAMS</b>	22/36
<b>ASPHALT TAPE</b>	24	<b>HARDOX S36</b>	66	<b>ETICS ADHESIVE FOAM AND PISTOL CLEANER</b>	52
<b>BAU CURE</b>	66	<b>HARDOX FLU-300</b>	65	<b>FIXTURES FOR THERMAL INSULATION</b>	53
<b>BAUCAST</b>	33	<b>HARDOX LEVEL FAST</b>	64	<b>ACID CLEANER FOR NATURAL STONES</b>	46
<b>BAU COLOR</b>	28/60	<b>HARDOX MIX</b>	64	<b>ACID CLEANER FOR TILES</b>	46
<b>BAULAT</b>	16/26	<b>HARDOX P22</b>	69	<b>GRANULOMETRY MONOKAPA FLEX / KAPASIL</b>	55
<b>BAUFIBERS</b>	28	<b>HYPER FLEX</b>	41	<b>UNCOUPLING MEMBRANE DRY 80 / DRY 50</b>	46
<b>BAUFINA</b>	30	<b>KAPALUX FLEX</b>	13	<b>COMPLEMENTARY THERMAL INSULATION PRODUCTS</b>	53
<b>BAUFLEX FIBER</b>	40	<b>KAPA 11</b>	49	<b>BAU RESINA COLOR CHART</b>	61
<b>BAUFLEX RAPI-GEL</b>	41	<b>KAPAGRIP</b>	50	<b>GRANULATO COLOR CHART</b>	56
<b>BAUFLEX UNIVERSAL</b>	40	<b>KAPASIL</b>	54		
<b>BAU MESH 80</b>	23	<b>MALTA STAR</b>	58		
<b>BAU MESH 160 / 160 S</b>	52	<b>MALTA PLUS</b>	58		
<b>BAU RESINA</b>	60	<b>MALTA UNO</b>	59		
<b>BAUSIL</b>	62	<b>MONOFLEX</b>	12		
<b>BAUTHERM G</b>	51	<b>MONOKAPA FLEX</b>	54		
<b>BAUTHERM W</b>	51	<b>MONOFLEX NANO-HYBRID</b>	12		
<b>BENTONITE WATERSTOP</b>	24	<b>MONOFLEX PU</b>	13		
<b>BETOSIL</b>	17/27	<b>NANOLINE 900W</b>	15		
<b>BETOFIX A40</b>	32	<b>NANOLINE 80W</b>	15		
<b>BETOFIX B70</b>	32	<b>PERLA</b>	42		
<b>BETOLAX</b>	17/27	<b>PERLA SILICONE</b>	19/43		
<b>BP 80</b>	23	<b>PETROBLOCK</b>	44		
<b>BUTYL TAPE</b>	24	<b>PISTOL CLEANER</b>	53		
<b>CLASSIC</b>	38	<b>PLASTER FIX</b>	32/59		
<b>CRYSTAL</b>	45	<b>PRO 101</b>	14/50		
<b>DECOSET</b>	44	<b>PYROFLEX</b>	45		
<b>ECOFLEX ORGANIC</b>	49	<b>ST VS 20</b>	22		
<b>ELASTOSIL</b>	11	<b>STELA</b>	28		
<b>ELASTOSIL 1C</b>	11	<b>STUCCOCEM</b>	31		
<b>EPOGROUT</b>	43	<b>SUPER ACRYLIC</b>	39		
<b>EXTRA</b>	38	<b>SUPERBIT</b>	20		
<b>FLEXIBLE PU SEALANT</b>	19	<b>SUPERBIT RUBBER</b>	20		
<b>GRANE</b>	31	<b>SUPERSIL ANTI-MOULD</b>	18		
<b>GRANULATO</b>	56	<b>SUPERSIL NEUTRAL</b>	18		
		<b>SUPERFIX 7</b>	30		
		<b>SUPERFIX 30</b>	35		
		<b>SUPERFIX 50</b>	35		
		<b>SUPER-GRIP</b>	46		





# **Waterproofing**

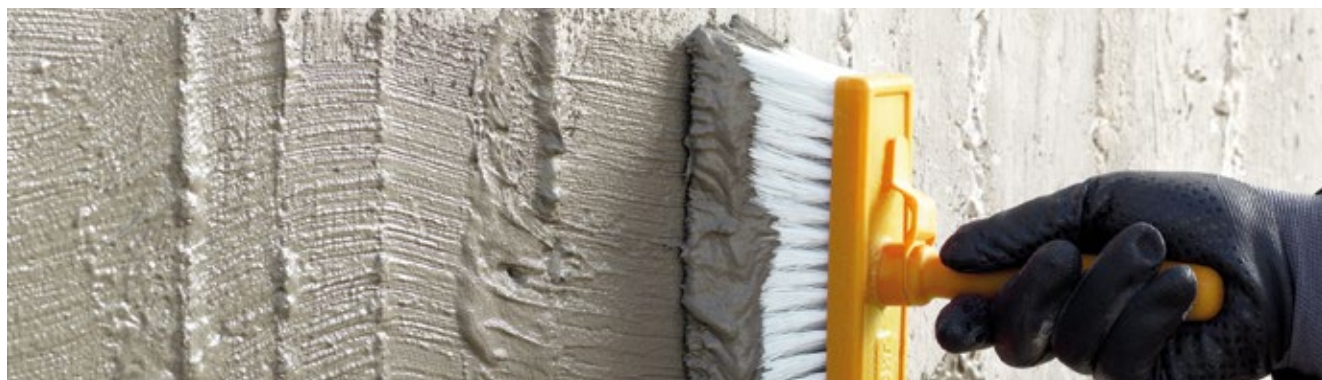
# Aquasil

## Brushable cement based sealing slurry

- For complete and permanent waterproofing of concrete, brickwork, plasters, etc.
- Ideal for basements, tanks, tunnels, foundations, wells, canals, etc.
- Endures positive and negative hydrostatic pressure.
- The surface stays vapor permeable.
- Suitable for contact with drinking water.
- **Application thickness (2 coats):** ≤ 5mm and ≥ 2mm



**CONSUMPTION:** 2-4 kg/m<sup>2</sup>



CODE / 1	COLOR	PACKAGE	PCS./PAL.	PRICE / KG	UNIT PRICE
1.01.02.0110	Grey	5 kg	4 pcs./box, 200pcs./pal.		
1.01.02.0100	Grey	25 kg	48 pcs./pal.		

# Aquasil Flex

## Flexible, two- component brushable cement based sealing mortar

- For complete and permanent waterproofing of concrete, brickwork, plasters.
- Ability to bridge surface cracks.
- Ideal for waterproofing surfaces that show or are expected to show hairline cracks due to thermal contractions-expansions or vibrations like surfaces to be covered with tiles on balconies, terraces, pools and bathrooms, inverted roof insulation, walls and floors of basements, tanks, wells, canals, etc.
- Endures positive and negative hydrostatic pressure and the surface remains water vapor permeable.
- Suitable for contact with drinking water.
- **Application thickness (2 coats):** ≤ 5mm and ≥ 2mm



**CONSUMPTION:** 2-4 kg/m<sup>2</sup>



CODE / 2	COLOR	PACKAGE	PCS./PAL.	PRICE / KG	UNIT PRICE
1.01.02.0170	Grey	33 kg (A+B)	Bags 48 pcs./pal. Containers 48 pcs./pal.		

## Elastosil

**Flexible, two-component brushable cement based sealing mortar**

- For complete and permanent waterproofing of concrete, brickwork, plasters, etc.
- Ability to bridge wide cracks (even greater than 2mm).
- Ideal for surfaces that show or are expected to show hairline cracks due to thermal contractions-expansions or vibrations like surfaces to be covered with tiles on balconies, terraces, pools and bathrooms, inverted insulation roofs, walls and floors of basements, tanks, planters, surfaces with ponding water such as terraces, etc.
- Endures positive and negative hydrostatic pressure and the surface remains water vapor permeable.
- Suitable for contact with drinking water.
- **Application thickness (2 coats):** ≤ 5mm and ≥ 2mm



**CONSUMPTION:** 2-4 kg/m<sup>2</sup>



CODE / 2	COLOR	PACKAGE	PCS./PAL.	PRICE / KG	UNIT PRICE
1.01.02.0120	White	16 kg (A+B)	24 pcs./pal.		
1.01.02.0090	White	35 kg (A+B)	Bags 48 pcs./pal. Containers 48 pcs./pal.		

## Elastosil 1C

**Deformable, one-component fiber reinforced cement based sealing mortar**

- For waterproofing of concrete, brickwork etc.
- For sealing surfaces that show or are expected to show hairline cracks due to thermal contractions-expansions or vibrations like surfaces to be covered with tiles on balconies, terraces, pools, bathrooms, as well as basements, tanks, wells, canals, etc.
- Endures positive and negative hydrostatic pressure and the surface remains water vapor permeable.
- **Application thickness (2 coats):** ≤ 4mm and ≥ 2mm



**CONSUMPTION:** 1,5 -3 kg/m<sup>2</sup>



CODE / 1	COLOR	PACKAGE	PCS./PAL.	PRICE / KG	UNIT PRICE
1.01.02.0070	White	18 kg	48 pcs./pal.		

# Monoflex

## Elastomeric acrylic waterproofing coating for roofs

- Very flexible, fully waterproof, resistant to environmental corrosion and UV radiation.
- Features excellent adhesion to concrete, cement mortars, metal, asphalt materials, etc.
- Distinguished for excellent resistance to extreme weather conditions, maintaining its properties in temperatures ranging from -10°C to 50°C.
- Dilute with 5-10% water for a first layer as a primer.
- **Lifecycle** ≈ 7 years.



**CONSUMPTION:** 1,5 kg/m<sup>2</sup> - 2,0 kg/m<sup>2</sup>



CODE / 2	COLOR	PACKAGE	PCS./PAL.	PRICE / KG	UNIT PRICE
1.01.02.0130 / 0200	White, Terracotta	1 kg	12 pcs./box		
1.01.02.0140 / 0210	White, Terracotta	5 kg	75 pcs./pal.		
1.01.02.0250 / 0260	White, Terracotta	12,6 kg (9 L)	44 pcs./pal.		

# Monoflex Nano-Hybrid

## New generation hybrid elastomeric roof waterproofing coating

- New nanomolecular resin modification technology.
- Very elastic, completely waterproof with great ponding water resistance, free of polyurethanes, solvents and other dangerous toxic substances.
- Features excellent adhesion to concrete, cement mortar, fine aggregate concrete, wood, metal and all kinds of sealing layers, asphalt materials and membranes.
- Excellent resistance to extreme weather conditions.
- The surface does not stick after application (tack free) even at high temperatures and consequently does not accumulate pollutants.
- Dilute with 5-10% water for a first layer as a primer.
- **Lifecycle** ≈ 10 years.



**CONSUMPTION:** 1,3-2,0 kg/m<sup>2</sup>



CODE / 2	COLOR	PACKAGE	PCS./PAL.	PRICE / KG	UNIT PRICE
1.01.02.0420	White	1 kg	12 pcs./box		
1.01.02.0410	White	5 kg	75 pcs./pal.		
1.01.02.0401	White	13 kg (10 L)	44 pcs./pal.		

## Monoflex PU

One component, professional, brushable polyurethane waterproofing membrane

- A sealing membrane without joints is formed after application, offering high elasticity and durability.
- Very elastic, completely waterproof with great ponding water resistance.
- Features excellent adhesion to concrete, cement mortar, fine aggregate concrete, metal and all kinds of sealing layers, asphalt materials, etc.
- The surface does not stick after application (tack free) even at high temperatures and consequently does not accumulate pollutants.
- **Form:** prepolymerized polyurethane resin.
- **Lifecycle** ≈ 10 years.



**CONSUMPTION:** 2,0-4,0 kg/m<sup>2</sup>



CODE / 7	COLOR	PACKAGE	PCS./PAL.	PRICE / KG	UNIT PRICE
1.01.02.0320	White	6 kg	45 pcs./pal.		
1.01.02.0310	White	25 kg	24 pcs./pal.		

## Kapalux Flex

Elastic and waterproofing, 100% acrylic high quality paint

- Features total water impermeability on vertical surfaces including old plasters with hairline cracks, etc.
- Excellent elasticity even at **-20°C**
- Great ability to bridge cracks.
- For particularly difficult environmental conditions and overworked surfaces.
- High resistance to dirt and easy cleaning.
- Very long lifecycle.



**CONSUMPTION:** ≈ 10-12m<sup>2</sup>/ L



CODE / 2	COLOR	PACKAGE	PCS./PAL.	PRICE / L	UNIT PRICE
1.01.02.1020	White - P	3 L			
1.01.02.1060.1/1060.2	Base - D/TR	3 L			
1.01.02.1010	White - P	10 L	44 pcs./pal.		
1.01.02.1050.1/1050.2	Base - D/TR	10 L	44 pcs./pal.		
1.01.02.1011	Colored	10 L	44 pcs./pal.		
1.01.02.1040	Colored	3 L			

## Pro 101

### Preparation primer for paints and colored plasters

- Very high penetration capacity.
- Ideal substrate for colored plasters, acrylic renders and elastic coatings such as **Kapalux**, **Monokapa**, **Kapasil**, **Granulato** and **Plaster fin**.
- Suitable for porous substrates such as first layer plasters, concrete, bricks, aerated concrete, cement adhesive coatings, cement mortars, etc.



**CONSUMPTION:** ≈ 0,1 - 0,2 kg/m<sup>2</sup>



CODE / 2	COLOR	PACKAGE	PCS./PAL.	PRICE / KG	UNIT PRICE
1.03.01.0390	White	1 kg	15 pcs./box		
1.03.01.0410	White	5 kg	112 pcs./pal.		
1.03.01.0400	White	20 kg	42 pcs./pal.		
1.03.01.0430	White	10 kg (Container)	44 pcs./pal.		

## Aqua Primer

### Two-component, water-based, industrial floor epoxy primer

- For priming surfaces that will be covered with epoxy coatings and as a substrate of **Monoflex PU** in low humidity concrete.
- For absorbent and non-absorbent inorganic substrates such as concrete, cement mortars, etc.



**CONSUMPTION:** ≈ 0,2-0,3 kg/m<sup>2</sup>



CODE / 7	COLOR	PACKAGE	PRICE / KG	UNIT PRICE
1.01.03.9080	Pale Yellow	8 kg (A+B)		

## Nanoline 900 W

Water and oil repellent, transparent nano impregnation surface waterproofing

- Anti - carbonation coating.
- Absorbent or very low absorbent substrate protection.
- Water vapor permeability of walls and floors remains unaffected.
- It does not produce a film on the surface and therefore does not change its original aesthetics.
- Suitable for marbles, granites, natural granite tiles, ceramic tiles, tile joints, natural or artificial stones, exposed concrete, plaster, cement mortars, bricks, etc.
- **Chemical base:** silane / siloxane aqueous dispersion.
- **Curing time:** 5-10 hours.



**CONSUMPTION:** ≈ 0,05 - 0,1 kg/m<sup>2</sup>



CODE / 1	COLOR	PACKAGE	PCS./PAL.	PRICE / KG	UNIT PRICE
1.03.01.0340	Trasparent (dry)	1 kg	15 pcs./box		
1.03.01.0320	Trasparent (dry)	5 kg	112 pcs./pal.		
1.03.01.0330	Trasparent (dry)	20 kg	42 pcs./pal.		

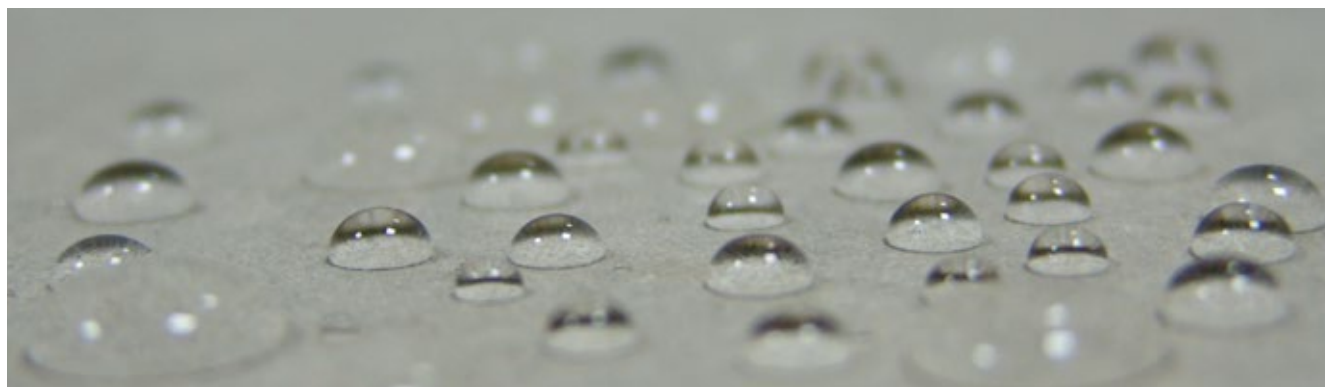
## Nanoline 80 W

Water repellent, transparent nano impregnation surface waterproofing

- Anti - carbonation coating.
- Water vapor permeability of walls and floors remains unaffected.
- It does not produce a film on the surface and therefore does not change its original aesthetics.
- For fair faced concrete, plaster, cement mortars, bricks, tiles, ceramics tiles, tile joints, natural or artificial stones, firebricks, etc.
- **Chemical base:** silane / siloxane aqueous dispersion.
- **Curing time:** 5-10 hours.



**CONSUMPTION:** ≈ 0,2-0,3 kg/m<sup>2</sup>



CODE / 1	COLOR	PACKAGE	PCS./PAL.	PRICE / KG	UNIT PRICE
1.03.01.0260	Trasparent (dry)	1 kg	15 pcs./box		
1.03.01.0270	Trasparent (dry)	5 kg	112 pcs./pal.		
1.03.01.0280	Trasparent (dry)	20 kg	42 pcs./pal.		

## Baulat

Super Mortar Enhancer based on high-density acrylic polymer. German technology

- For reinforcement, elasticity and waterproofing of plasters and underfloor heating systems. Bonds old with new concrete. In cement mortars for ramps and gutters, concrete repairs and anti-corrosion protection of rebars. As a primer for all surfaces, enhances tile adhesives and grouts, stabilizes fragile surfaces, etc.
- Provides great elasticity (produces mortars free from cracks).
- High resistance to sunlight and the environment.
- Excellent adhesion to all substrates even on smooth surfaces.
- Significant increase in mechanical strength.
- Excellent impermeability to water.



**CONSUMPTION:** 1:5 to 1:1 in the mixing water



CODE / 2	COLOR	PACKAGE	PCS./PAL.	PRICE / KG	UNIT PRICE
1.03.01.0080	White	1 kg	15 pcs./box		
1.03.01.0090	White	5 kg	112 pcs./pal.		
1.03.01.0100	White	20 kg	42 pcs./pal.		
1.03.01.0110	White	120 kg (Barrel)	5 pcs./pal.		

## Superlat Latex

Mortar Enhancer based on acrylic polymer. German technology

- For reinforcement, elasticity and waterproofing of plasters and underfloor heating systems. Bonds old with new concrete. In cement mortars for ramps and gutters, concrete repairs and anti-corrosion protection of rebars. As a primer for all surfaces, enhances tile adhesives and grouts, stabilizes fragile surfaces, etc.
- Provides great elasticity (produces mortars free from cracks).
- High resistance to sunlight and the environment.
- Excellent adhesion to all substrates even on smooth surfaces.
- Significant increase in mechanical strength.
- Excellent impermeability to water.



**CONSUMPTION:** 1:5 to 1:1 in the mixing water



CODE / 2	COLOR	PACKAGE	PCS./PAL.	PRICE / KG	UNIT PRICE
1.03.01.0450	White	1 kg	15 pcs./box		
1.03.01.0460	White	5 kg	112 pcs./pal.		
1.03.01.0470	White	20 kg	42 pcs./pal.		
1.03.01.0480	White	120 kg (Barrel)	5 pcs./pal.		



## Betolax

### Plasticizer for concrete, mortars and concrete waterproofing agent type T9

- Reduces water requirement of concrete during application, increases its final strength, reduces porosity, achieves low mass absorbency, according to EN 934-2:T9 standards.
- Creates great fluidity in concrete and mortars, offers increased workability, especially in cases of steel reinforcement, provides an extremely smooth final surface.
- For foundations, basements, swimming pools, sewerage plants, dams, reservoirs, canals, generally where high quality watertight and easily workable concrete is required.
- **Chemical base:** Lignosulfonate processed polymer.



**CONSUMPTION:** ≈ 0,2-0,5kg per 100 kg cement



CODE / 1	COLOR	PACKAGE		PCS./PAL.	PRICE / KG	UNIT PRICE
1.03.01.0120	Brown	1 kg	<b>NEW!</b>	15 pcs./box		
1.03.01.0050	Brown	5 kg		112 pcs./pal.		
1.03.01.0060	Brown	20 kg		42 pcs./pal.		
1.03.01.0040	Brown	1000 kg		IBC Tank		

## Betosil **NEW!**

### Crystalline cementitious waterproofing admixture for concrete plasticizer

- High endurance in positive and negative hydrostatic pressure.
- Permanently active for continuous protection of the structure from water penetration.
- High endurance in drastic chemicals.
- Significant reduction of water absorption through hairline cracks.
- Improves concrete durability.



**CONSUMPTION:** ≈ 0,8% - 1% by weight of cement



CODE / 1	PACKAGE	PCS./PAL.	PRICE / KG	UNIT PRICE
1.01.02.0350	15 kg	48 pcs./pal.		

## Supersil Anti-Mould

Acidic silicone with long lasting anti-mould action

- Suitable for sealing joints in structures made of glass, aluminum, porcelain (tiles, sanitary ware) and non-porous (glazed) ceramics.
- Ideal for bathrooms, kitchens, bathtubs, sinks, tiles, etc.
- For hospitals, laboratories and other places that are submitted to strict hygiene standards.
- Its color does not change and it does not turn black.
- Non paintable.

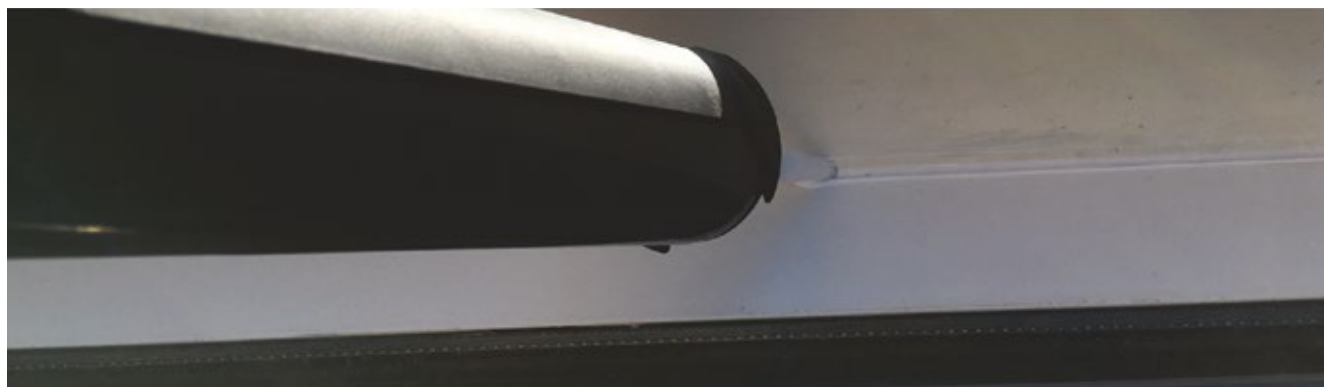


CODE / 1	COLOR	PACKAGE	PCS. / BOX	UNIT PRICE
5.01.05.0100	Trasparent	280ml	25 pcs.	
5.01.05.0110	White	280ml	25 pcs.	

## Supersil Neutral

Jointing neutral silicon

- Ideal for sealing vertical and horizontal joints in construction and industry in general.
- Suitable for windows, joints between window frames and walls, joints of different materials such as glass, wood, concrete, plaster, brick, metal, ceramics, plastics (except PE, PP, PTFT).
- For indoor and outdoor applications with excellent resistance to moisture.
- Resistant to atmospheric agents and UV radiation.
- **Film formation time:** 5-10 minutes. (Drying speed: 3mm / 24 hours).
- Non paintable.



CODE / 1	COLOR	PACKAGE	PCS. / BOX	UNIT PRICE
5.01.05.0120	Trasparent	280ml	25 pcs.	

## Flexible PU Sealant

Solvent free, polyurethane elastic sealant and multi-purpose adhesive

- Appropriate for sealing vertical and horizontal joints 10-25mm wide.
- For indoor and outdoor applications with excellent resistance to moisture.
- Features excellent adhesion to all building materials, including concrete, plaster, natural or synthetic stones, metals, aluminum, wood, ceramic, tile, plastic, etc.
- For sealing, repairs and welding on window sills, stairs, skirting boards, prefabricated elements, balcony parapets, joints around windows and doors, facades, metal panels, concrete joints, etc.
- Paintable.



CODE / 1	COLOR	PACKAGE	PCS./PAL.	UNIT PRICE
5.01.05.0220-0200	Grey, White	310ml	25 pcs./box 60 boxes/pal.	
5.01.05.0230-0210	Grey, White	600ml	15 pcs./box 60 boxes/pal.	

## Perla Silicone

**NEW!**

Coloured Silicone for grouting tiles

- Offers unique elasticity (e.g expansion joints etc.).
- Ideal for internal and external use.
- Suitable for grouting all types of tiles on any surface.
- Offers quick and easy application, as well as easy cleaning of any residues from the installation.



CODE / 3	COLOR	PACKAGE	PCS. / BOX	UNIT PRICE
5.01.05.1010	White No.1	280ml	25 pcs.	
5.01.05.1030	Light grey No.3	280ml	25 pcs.	
5.01.05.1040	Dark grey No.4	280ml	25 pcs.	
5.01.05.1070	Grey arzan No.7	280ml	25 pcs.	
5.01.05.1080	Beige No.8	280ml	25 pcs.	
5.01.05.1090	Ivory No.9	280ml	25 pcs.	
5.01.05.1260	Mocha No.26	280ml	25 pcs.	

## Superbit

### Solvent free, asphalt waterproofing emulsion

- A mixture of clean asphalt and special polymers which after dispersant evaporation forms a single black elastic film sealer.
- Mainly used for waterproofing and protection of horizontal and vertical surfaces such as retaining walls, sloping roofs, floors, foundation elements, etc.
- For vapor barrier creation.
- For adhesion of thermal insulation boards.
- For renewal of asphalt paving layers.
- As a primer for adhesion of bituminous membranes.



**CONSUMPTION:** ≈ 0,2-1,0kg/m<sup>2</sup>



CODE / 3	COLOR	PACKAGE	PCS./PAL.	PRICE / KG	UNIT PRICE
1.01.02.1560	Dark brown	18 kg	24 pcs./pal.		

## Superbit Rubber

### Elastomer asphalt waterproofing emulsion without solvents

- A mixture of clean asphalt, emulsifying resins and special elastomeric polymers which after dispersant evaporation forms a single sealing film with excellent elasticity and moisture resistance.
- Mainly used for waterproofing and protection of horizontal and vertical surfaces such as retaining walls, roofs, pitched roofs, floors, foundations, etc.
- For vapor barrier creation.
- For adhesion of thermal insulation boards.
- For renewal of asphalt paving layers.
- As a primer for adhesion of bituminous membranes.



**CONSUMPTION:** ≈ 0,2-1,0kg/m<sup>2</sup>



CODE / 3	COLOR	PACKAGE	PCS./PAL.	PRICE / KG	UNIT PRICE
1.01.02.1200	Dark brown	18 kg	24 pcs./pal.		

## Tetrablock 3,0 G

Plastomeric bituminous membrane

- Provides high durability absolute waterproofing.
- A mixture of high quality asphalt and thermoplastic polymers (APP). Reinforced with fortified glazing.
- The upper surface of the film is covered with polyethylene sheet.
- The bottom surface has a thin polyethylene film suitable for blowtorch use.
- **Cold flexibility:** -5°C. **Temperature resistance:** + 120°C. **Softening point:**> + 150°C
- **Weight:** 3.0 kg / m<sup>2</sup>



CODE / 3	COLOR	PACKAGE	PCS./PAL.	PRICE / KG	UNIT PRICE
5.03.04.2410	Black	Roll 1x10m 10m <sup>2</sup>	42 pcs.		

## Tetrablock 4,5 PM

Plastomeric bituminous membrane with chippings for high durability absolute waterproofing

- A mixture of high quality asphalt and thermoplastic polymers (APP).
- Reinforced with a non-woven synthetic polyester shielded with glass fibers.
- The upper surface of the film is covered light grey mineral chippings, while the bottom surface has a thin polyethylene film suitable for blowtorch use.
- **Cold flexibility:** -5°C. **Temperature resistance:** + 120°C. **Softening point:** > + 150°C
- **Weight:** 4,5 kg / m<sup>2</sup>
- **Elongation at break (length):** 45%
- **Elongation at break (width):** 50%



CODE / 3	COLOR	PACKAGE	PCS./PAL.	PRICE / KG	UNIT PRICE
5.03.04.2400	Light grey	Roll 1x10m 10m <sup>2</sup>	30 pcs./pal.		

## ST VS 20 NEW!

### Acrylic varnish for stone and stamped floors

- Acrylic transparent varnish for the protection of natural stones (slates, alabaster, etc.), stamped floors and artificial building materials (decorative bricks, tiles, etc.).
- Revives the natural color of the material on which it is applied on.
- Protects the surface from water, sun radiation and pollutants.
- Applied on walls and floor coverings, suitable for both indoors and outdoors applications.



**CONSUMPTION:** ≈ 130-200 g/m<sup>2</sup> per layer depending on the surface absorbency

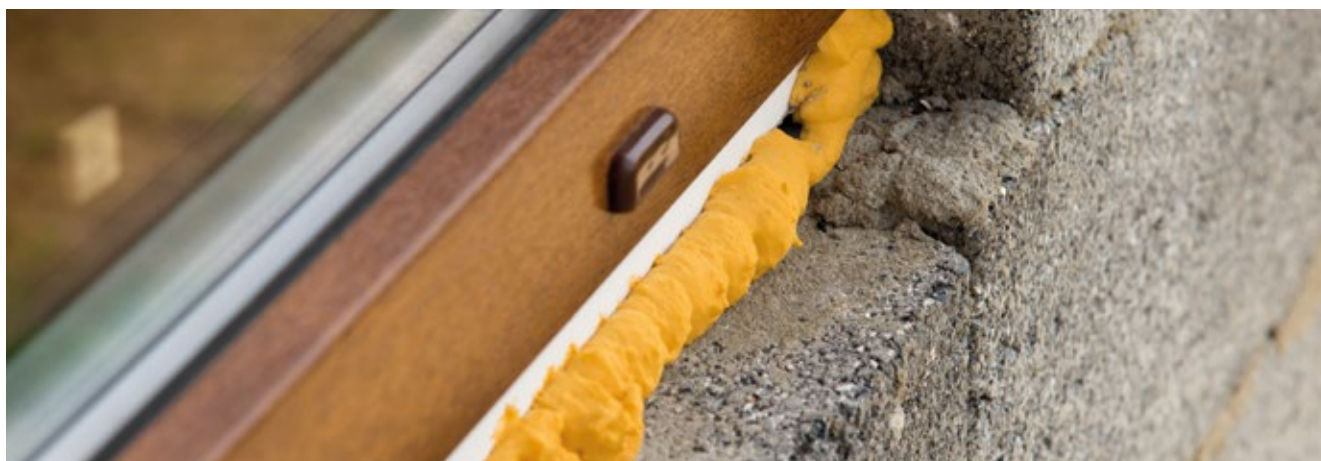


CODE / 1	COLOR	PACKAGE	PCS./PAL.	PRICE / KG	UNIT PRICE
1.01.03.9160	Transparent	1 L	6 pcs./box		
1.01.03.9170	Transparent	4 L	48 pcs./pal.		

## PU Foam NEW!

### Standard & Low expansion foam

- Hardens with atmospheric humidity.
- Ideal for fastening, welding and sealing.
- Excellent adhesion to all types of building materials.
- Resistant to ageing and moisture.



CODE / 3	DESCRIPTION	PACKAGE	PCS. / BOX	UNIT PRICE
5.01.05.0500	Standard foam	750ml (By hand)	12 pcs.	
5.01.05.0710	Low expansion	750ml (Pistol)	12 pcs.	

## Bau Mesh 80

High-strength fiberglass mesh with a protective coating of special polymers against alkaline effects

- Essential for total or partial reinforcement of coatings and waterproofing layers.
- Specially designed for the reinforcement of waterproofing coatings of epoxy, polyurethane, acrylic resins, cement mortars and lime.
- Provides significant structural reinforcement and prevents cracking from temperature expansion and contraction.
- **Mesh width:** 4,5 x 4,5 mm. ± 0.2
- **Weight (g/m<sup>2</sup>):** raw net 80 g/m<sup>2</sup> ± 5%
- **Coating (g/m<sup>2</sup>):** 20 g/m<sup>2</sup> ± 5%



CODE / 3	COLOR	PACKAGE	PCS./PAL.	PRICE / m <sup>2</sup>	UNIT PRICE
5.03.04.2000	White 80	50m x 1m=50m <sup>2</sup>	30 pcs./pal.		

## BP 80

Polyethylene drainage film

- For concrete protection and layer waterproofing when backfilling.
- High density.
- With conical protrusions 8.0mm high.
- Resistant to chemical substances and plant roots.
- Suitable for contact with drinking water.
- **Form:** high density polyethylene, brown film.
- **Material thickness:** 0.5 mm
- **Drainage capacity:** approximately 2.25 l / sec.m

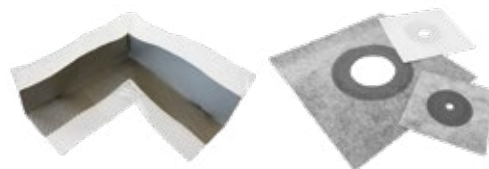


CODE / 3	COLOR	PACKAGE	PRICE / m <sup>2</sup>	UNIT PRICE
5.03.04.2200	Dark brown	Roll 2m x 20m 40m <sup>2</sup>		

## Aqua Tape

Sealing tape and special joint parts for corners, piping and pipettes

- High quality elastic tape made of thermoplastic elastomer.
- For sealing contraction and expansion joints, wall/floor mounting angles and perimeter of pipes and pipettes.
- Resistant to chemical exposure.
- Ensures proper evaporation of water in tile adhesives that cover the film and the parts.
- For swimming pools, bathrooms, outdoor areas, car parks and generally where floors are in contact with the ground.



CODE / 3	DESCRIPTION	PACKAGE	PRICE / m	UNIT PRICE
5.03.04.3010	Tape Roll 12cmx10m	1 pcs./box		
5.03.04.3020	Internal corner	25 pcs./box		
5.03.04.3030	External corner	25 pcs./box		
5.03.04.3040	Collar 50mm 12cmx12cm	25 pcs./box		
5.03.04.3050	Collar 75mm 15cmx15cm	25 pcs./box		
5.03.04.3060	Collar 115mm 25cmx25cm	25 pcs./box		

## Butyl Tape

Adhesive joint sealing tape

- High quality elastic butyl tape coated with polypropylene fabric.
- For sealing contraction and expansion joints and wall/floor mounting angles.
- Resistant to chemical exposure.
- Ensures proper evaporation of water in tile adhesives and sealants that cover the film.
- For swimming pools, bathrooms, outdoor areas, car parks and generally where floors are in contact with the ground.



CODE / 3	DESCRIPTION	PRICE / m	UNIT PRICE
5.03.04.3100	Roll 10cm x 10m		

## Asphalt Tape

Adhesive asphalt joint sealing tape

- High quality elastic asphalt tape coated with aluminum.
- For sealing joints in gutters, chimneys, tiles, etc.
- Excellent adhesion to all building materials.
- Resistant to sunlight and demanding weather conditions.



CODE / 3	DESCRIPTION	PRICE / m	UNIT PRICE
5.03.04.3200	Roll 15cm x 10m		

## Bentonite Waterstop

Swelling bentonite tape for waterproofing concrete joints

- **Width:** 20 x 25mm
- **Weight:** 25kg / 30m



CODE / 3	DESCRIPTION	PRICE / m	UNIT PRICE
5.03.04.3300	30m/box		





# **Admixtures for Mortars**

## Baulat

Super Mortar Enhancer based on high-density acrylic polymer. German technology

- For reinforcement, elasticity and waterproofing of plasters and underfloor heating systems. Bonds old with new concrete. In cement mortars for ramps and gutters, concrete repairs and anti-corrosion protection of rebars. As a primer for all surfaces, enhances tile adhesives and grouts, stabilizes fragile surfaces, etc.
- Provides great elasticity (produces mortars free from cracks).
- High resistance to sunlight and the environment.
- Excellent adhesion to all substrates even on smooth surfaces.
- Significant increase in mechanical strength.
- Excellent impermeability to water.



**CONSUMPTION:** 1:5 to 1:1 in the mixing water



CODE / 2	COLOR	PACKAGE	PCS./PAL.	PRICE / KG	UNIT PRICE
1.03.01.0080	White	1 kg	15 pcs./box		
1.03.01.0090	White	5 kg	112 pcs./pal.		
1.03.01.0100	White	20 kg	42 pcs./pal.		
1.03.01.0110	White	120 kg (Barrel)	5 pcs./pal.		

## Superlat Latex

Mortar Enhancer based on acrylic polymer. German technology

- For reinforcement, elasticity and waterproofing of plasters and underfloor heating systems. Bonds old with new concrete. In cement mortars for ramps and gutters, concrete repairs and anti-corrosion protection of rebars. As a primer for all surfaces, enhances tile adhesives and grouts, stabilizes fragile surfaces, etc.
- Provides great elasticity (produces mortars free from cracks).
- High resistance to sunlight and the environment.
- Excellent adhesion to all substrates even on smooth surfaces.
- Significant increase in mechanical strength.
- Excellent impermeability to water.



**CONSUMPTION:** 1:5 to 1:1 in the mixing water



CODE / 2	COLOR	PACKAGE	PCS./PAL.	PRICE / KG	UNIT PRICE
1.03.01.0450	White	1 kg	15 pcs./box		
1.03.01.0460	White	5 kg	112 pcs./pal.		
1.03.01.0470	White	20 kg	42 pcs./pal.		
1.03.01.0480	White	120 kg (Barrel)	5 pcs./pal.		

## Betolax

### Plasticizer for concrete, mortars and concrete waterproofing agent type T9

- Reduces water requirement of concrete during application, increases its final strength, reduces porosity, achieves low mass absorbency, according to EN 934-2:T9 standards.
- Creates great fluidity in concrete and mortars, offers increased workability, especially in cases of dense concrete reinforcement, provides an extremely smooth final surface.
- For foundations, basements, swimming pools, sewerage plants, dams, reservoirs, canals, generally where high quality watertight and easily workable concrete is required.
- **Chemical base:** Lignosulfonate processed polymer.



**CONSUMPTION:** ≈ 0,2-0,5kg per 100 kg cement



CODE / 1	COLOR	PACKAGE		PCS./PAL.	PRICE / KG	UNIT PRICE
1.03.01.0120	Brown	1 kg	<b>NEW!</b>	15 pcs./box		
1.03.01.0050	Brown	5 kg		112 pcs./pal.		
1.03.01.0060	Brown	20 kg		42 pcs./pal.		
1.03.01.0040	Brown	1000 kg		IBC Tank		

## Betosil

**NEW!**

### Crystalline cementitious waterproofing admixture for concrete plasticizer

- High endurance in positive and negative hydrostatic pressure.
- Permanently active for continuous protection of the structure from water penetration.
- High endurance in drastic chemicals.
- Significant reduction of water absorption through hairline cracks.
- Improves concrete durability.



**CONSUMPTION:** ≈ 0,8% - 1% by weight of cement



CODE / 1	PACKAGE	PCS./PAL.	PRICE / KG	UNIT PRICE
1.01.02.0350	15 kg	48 pcs./pal.		

## Stela

### Plasticizer for cement based mortars fully replacing lime

- For use in plasters, masonry and marble mortars, sprayed mortars, decorative stone coating mortars, etc.
- Replaces lime with a very small amount of Stela when mixing mortars with water.
- Offers better adhesion and plasticity than lime, increases curing time and strength of masonry and cement mortars. Improves the final surface of mortars while significantly increasing water tightness and substantially reducing costs.



**CONSUMPTION FOR COATINGS:** 150ml / 50kg cement, for binding mortars: 100ml / 50kg cement



CODE / 1	PACKAGE	PCS./PAL.	PRICE / L	UNIT PRICE
1.03.01.0010	1 L	15 pcs./box		
1.03.01.0020	5 L	112 pcs./pal.		
1.03.01.0030	20 L	42 pcs./pal.		

## Baucolor

### Inorganic powder pigment, based on mineral oxides

- For coloring micro cement mortar **BAU RESINA**
- For coloring plasters, concrete and cement mortars.
- Add to dry cement mix with aggregate before mixing with water.
- For indoor and outdoor areas, grouts and pavers.



**CONSUMPTION:** 1.5 to 1:1 in the mixing water. To color **BAU RESINA**, please refer to its color chart.

CODE / 3	COLOR	PACKAGE	PCS. / BOX	UNIT PRICE
1.14.00.0011	Ocher	0,4 kg	9 pcs./box	
1.14.00.0012	Black	0,7 kg	9 pcs./box	
1.14.00.0013	Terracotta	0,7 kg	9 pcs./box	
1.14.00.0014	Green	0,7 kg	9 pcs./box	
1.14.00.0015	Blue	0,5 kg	9 pcs./box	
1.14.00.0031	<b>NEW!</b> K Ocher	0,25 kg (5 pcs. of 50g bags)	9 pcs./box	
1.14.00.0032	B Black	0,25 kg (5 pcs. of 50g bags)	9 pcs./box	
1.14.00.0033	L Light brown	0,25 kg (5 pcs. of 50g bags)	9 pcs./box	
1.14.00.0034	D Dark brown	0,25 kg (5 pcs. of 50g bags)	9 pcs./box	
1.14.00.0035	G Green	0,25 kg (5 pcs. of 50g bags)	9 pcs./box	
1.14.00.0036	C Blue	0,25 kg (5 pcs. of 50g bags)	9 pcs./box	

## Bau Fibers

### Polypropylene fibers for reinforcement of concrete and mortars

- Prevents shrinkage cracking during the plastic phase of coagulation of mortars.
- Baufibers technology offers quick dispersion in cement and concrete.
- **Form:** white fibers, 6 and 12 mm long with 32mm diameter.
- **Swelling in liquids:** 0%
- **Melting point:** 170C°
- **Number of fibers:** ≈ 240 and 120 million / kg for 6mm and 12 mm in length, respectively.



CODE / 3	COLOR	PACKAGE	PCS. / BOX	UNIT PRICE
5.01.04.0200	White	6mm / 600gr bag	30 pcs. / box	
5.01.04.0210	White	12mm / 600gr bag	30 pcs. / box	



# **Repairing & Sealants**

## Superfix 7

### Ultra-fine polymer modified spatula putty

- For perfect smoothing on walls and ceilings.
- For indoor and outdoor use on plaster, plasterboard or concrete surfaces to be covered with paint.
- Soft spread, fast dry, no cracking, easy sanding, high performance for perfectly smooth and durable surfaces.
- **Extra fine grain for extremely smooth surface (0.05 mm maximum grain).**
- Priming not needed prior to application.
- Excellent transpiration properties.
- **Form:** dry cement based powder.



**CONSUMPTION:** ≈ 1,1 kg/m<sup>2</sup>



CODE / 1	COLOR	PACKAGE	PCS./PAL.	PRICE / KG	UNIT PRICE
1.01.01.2110	White	5 kg	3 pcs./box, 150 pcs./pal.		
1.01.01.2100	White	20 kg	60 pcs./pal.		

## Baufina

### Ultra-fine polymer modified pasty acrylic putty

- For perfect smoothing on walls and ceilings.
- For indoor and outdoor use on plaster, plasterboard or concrete surfaces to be covered with paint.
- Soft spread, fast dry, no cracking, easy sanding, high performance for perfectly smooth and durable surfaces.
- Extra fine grain for extremely smooth surface (0.05 mm maximum grain).
- Priming not needed prior to application.
- Excellent transpiration properties.
- **Form:** acrylic base ready to use paste.



**CONSUMPTION:** ≈ 1,1 - 2,0 kg/m<sup>2</sup>



CODE / 1	COLOR	PACKAGE	PCS./PAL.	PRICE / KG	UNIT PRICE
1.01.01.2050	White	18 kg	44 pcs./pal.		

## Stuccocem

### Fine-grained, cement-based polymer modified trowel coating putty

- Highly resistant to moisture for partial or total smoothing and repair of concrete, plaster, etc.
- For indoor and outdoor areas.
- Classified as a repair mortar type **PCC class R2** according to the requirements of the European standard **EN 1504-3**.
- Soft spread, fast dry, no cracking, easy sanding.
- Fine grain for smooth surfaces (0.2 mm maximum grain).
- Excellent transpiration properties.
- **Form:** dry cement based powder.



**CONSUMPTION:** ≈ 1,4kg/m<sup>2</sup>/mm layer thickness



CODE / 1	COLOR	PACKAGE	PCS./PAL.	PRICE / KG	UNIT PRICE
1.01.01.2140	White	5 kg	4 pcs./box 200 pcs./pal.		
1.01.01.2120	White	25 kg	48 pcs./pal.		
1.01.01.2150	Grey	5 kg	4 pcs./box 200 pcs./pal.		
1.01.01.2130	Grey	25 kg	48 pcs./pal.		

## Grane

### Coarse-grained, polymer modified cement-based coating putty

- Highly resistant to moisture for partial or total smoothing and repair of concrete, plaster, etc.
- For indoor and outdoor areas.
- Classified as a repair mortar type **PCC class R2** according to the requirements of the European standard **EN 1504-3**.
- **Coarse grain (0.5 mm maximum grain).**
- Priming not needed prior to application.
- Excellent transpiration properties.
- **Form:** dry cement based powder.



**CONSUMPTION:** ≈ 1,4kg/m<sup>2</sup>/mm layer thickness



CODE / 1	COLOR	PACKAGE	PCS./PAL.	PRICE / KG	UNIT PRICE
1.01.01.1031	White	25 kg	48 pcs./pal.		

## Betofix A40

Polymer modified cement-based mortar for concrete repairs

- Modified with polymeric reinforcements to repair concrete on total surface or spot areas, to form fillets at wall-floor junctions, imperfections, corners, groove creation, to fix ridge tiles on roofs, etc.
- Classified as a repair mortar type **PCC class R2** according to the requirements of the European standard **EN 1504-3**.
- One component, fiber reinforced mortar.
- Stable volume, without corrosive ingredients.



**CONSUMPTION:** ≈ 15kg/m<sup>2</sup>/cm layer thickness



CODE / 1	COLOR	PACKAGE	PCS./PAL.	PRICE / KG	UNIT PRICE
1.01.01.1190	Grey	5 kg	4 pcs./box 200 pcs./pal.		
1.01.01.1090	Grey	25 kg	48 pcs./pal.		

## Betofix B70

Fast setting, fiber-reinforced, polymer modified, cement-based, non-shrinking mortar for concrete repairs

- Stable volume with compensable shrinkage to prevent cracking.
- Develops more than twice the compressive strength of ordinary concrete, has high thixotropy (thickness up to 60mm / layer), completely free of corrosive ingredients and modified with polymeric reinforcements for excellent adhesion.
- For highly demanding structural repairs and concrete reinforcements, restoration work on deteriorated surfaces, damaged concrete with exposed steel, forming fillets at wall-floor junctions, groove creation, peak fastening, restoring aesthetic appearance on total surface or spot areas.
- Classified as concrete repair mortar type **R4**, in accordance with the requirements of the European standard **EN 1504-3**.



**CONSUMPTION:** ≈ 15kg/m<sup>2</sup>/cm layer thickness



CODE / 1	COLOR	PACKAGE	PCS./PAL.	PRICE / KG	UNIT PRICE
1.01.01.1170	Grey	5 kg	4 pcs./box 200 pcs./pal.		
1.01.01.1070	Grey	25 kg	54 pcs./pal.		



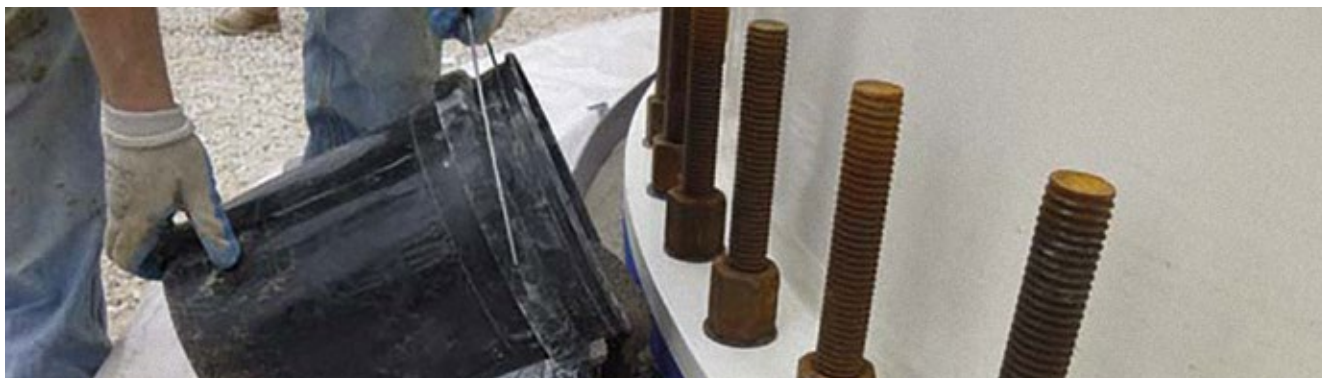
## Baucast

Non-shrinking, repair and reinforcement mortar for casting

- Develops more than twice the compressive strength of ordinary concrete. Applied in thicknesses up to 100mm / layer.
- Completely free of corrosive substances and chlorides, polymer-modified reinforcement for excellent adhesion on surfaces.
- Suitable for construction sheathing or filling voids in concrete elements, anchoring, filling of joints, seating and encasing of machinery, bearings and anchors, metal beams-pillars, etc.
- Classified as repair concrete mortar type **R4**, in accordance to the requirements of the European standard **EN 1504- 3**.



**CONSUMPTION:** ≈ 20kg/m<sup>2</sup>/cm or 2,0kg/L



CODE / 1	COLOR	PACKAGE	PCS./PAL.	PRICE / KG	UNIT PRICE
1.01.01.1100	Grey	25 kg	48 pcs./pal.		

## Armoseal

Brushable bonding layer mortar designed to protect steel reinforcements from corrosion

- Armoseal creates the right pH environment to protect steel reinforcements.
- Ideal bonding layer between old and new concrete or mortar.
- **Form:** cementitious powder.



**CONSUMPTION:** Corrosion protection≈70–100g / reinforcement running meter, as bonding layer ≈ 2kg/m<sup>2</sup>



CODE / 1	COLOR	PACKAGE	PCS./PAL.	PRICE / KG	UNIT PRICE
1.01.10.0540	Light blue	1 kg	8 pcs./box, 400 pcs./pal.		
1.01.10.0550	Light blue	5 kg	4 pcs./box, 200 pcs./pal.		

## Plaster Fix

Fast setting, polymer modified white repair render for a wide variety of repairs and fixes

- Ideal for fixing damaged corners, filling cracks and gaps, shape broken plasters and restoring damages caused by the operation of construction crews like plumbers, casing installers, carpenters, electricians, etc.
- **Advantages:** Quick plaster repairs/ Excellent workability / High mechanical strength / Excellent adhesion / Non visible splices.
- **Form:** cementitious dry mortar with maximum grain size 1,30mm (as the traditional marble plaster).



**CONSUMPTION:** ≈ 15kg/m<sup>2</sup>/cm layer thickness



CODE / 1	COLOR	PACKAGE	PCS./PAL.	PRICE / KG	UNIT PRICE
1.01.01.1150	White	5 kg	4 pcs./box 200 pcs./pal.		
1.01.01.1050	White	25 kg	48 pcs./pal.		

## Ultra Fast

Fast setting, fiber reinforced, stable volume cement mortar

- Workable for 10 minutes. Fast fixing reinforcement mesh in renders, electrical panels and junction boxes replacing plaster casts, necessary for plumbing work, mounting aluminum profiles, in wells and generally where work speed is required.
- Suitable for anchorages and placements of metal railings and columns, sealing of holes, fixing of corner profiles, corner beads and many other applications.



**CONSUMPTION:** ≈ 15kg/m<sup>2</sup>/cm layer thickness



CODE / 1	COLOR	PACKAGE	PCS./PAL.	PRICE / KG	UNIT PRICE
1.01.10.0520	Grey	2 kg	8 pcs./box 250 pcs./pal.		
1.01.10.0530	Grey	25 kg	48 pcs./pal.		

## Superfix 30

### Epoxy based, 2-component, thixotropic adhesive and sealant agent

- Applied with trowel in layers of maximum thickness 30mm on horizontal surfaces and 15 mm on vertical surfaces.
- Provides very high strength bonding among different materials such as concrete, natural stone, mortar, bricks, cement, steel, aluminum, wood, glass, polyester, epoxy and many more. Solvent free, stable volume, multipurpose bonding agent for a large variety of repairs, welds, sealings, etc.
- Non-shrinking and unaffected by moisture.
- **Form:** thixotropic paste.
- **Density (A + B):** 1,80 kg/L



**CONSUMPTION:** ≈ 20kg/m<sup>2</sup>/cm or 2,0kg/L



CODE / 7	COLOR	PACKAGE	PCS./PAL.	PRICE / KG	UNIT PRICE
1.01.10.0500	Light grey	1 kg	6 pcs./box		
1.01.10.0470	Light grey	4 kg	48 pcs./pal.		

## Superfix 50

### Low viscosity injection epoxy resin

- Thin liquid adhesive and sealing material with zero shrinkage used to fill and seal voids and cracks in structures such as bridges and other civil engineering buildings, industrial and residential buildings, e.g. columns, beams, foundations, walls, floors and water retaining structures.
- It is applied by resin injections or casting.
- It forms a barrier against water infiltration, prevents corrosion and contributes to the adhesion (monolithicity) of concrete.
- **Density (A + B):** 1,10 kg / l
- **Working time:** 10°C → 85 min, 30°C → 15 min



**CONSUMPTION:** ≈ 1,1kg/L

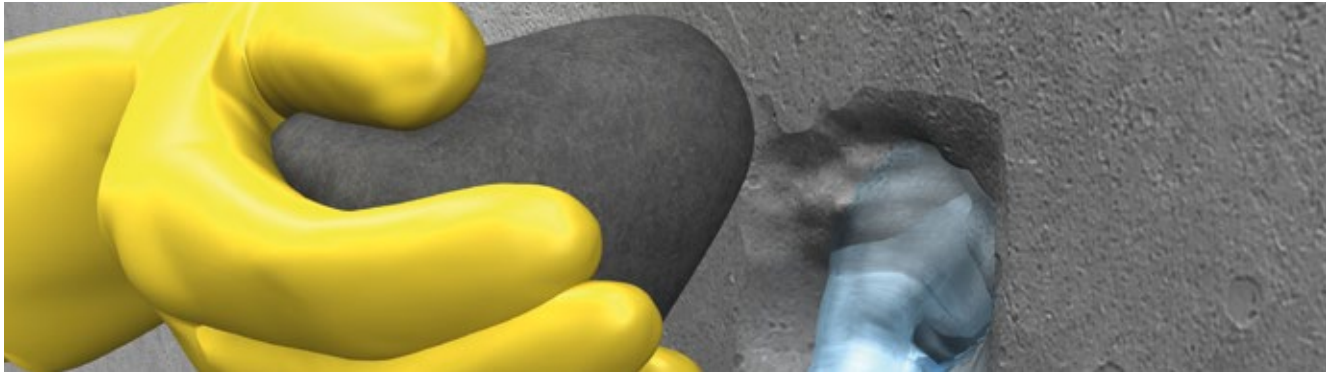


CODE / 7	COLOR	PACKAGE	PCS./PAL.	PRICE / KG	UNIT PRICE
1.01.10.0510	Trasparent	1 kg	6 pcs./box		
1.01.10.0480	Trasparent	9 kg	48 pcs./pal.		

# Aquablock

Fast setting mortar for sealing water leaks, fast fixing and anchoring. The mixture remains workable for 1-2 minutes.

- **Form:** Dry cement-based powder.
- **Mortar Density:** 1,2 kg/l
- **Mixing ratio:** 30% water by weight.



CODE / 1	COLOR	PACKAGE	PCS./PAL.	PRICE / KG	UNIT PRICE
1.01.04.1100	Grey	1 kg	10 pcs./box 250 pcs./pal.		
1.01.01.1130	Grey	20 kg	4 pcs. x 5 kg in plastic pail		

# PU Foam NEW!

Standard & Low expansion foam

- Hardens with atmospheric humidity.
- Ideal for fastening, welding and sealing.
- Excellent adhesion to all types of building materials.
- Resistant to ageing and moisture.



CODE / 3	DESCRIPTION	PACKAGE	PCS. / BOX	UNIT PRICE
5.01.05.0500	Standard foam	750ml (By hand)	12 pcs.	
5.01.05.0710	Low expansion	750ml (Pistol)	12 pcs.	



# **Tile Adhesives**

# Classic

## Cement based tile adhesive

- For fixing ceramic tiles on walls and floors.
- Ideal for surfaces made of concrete, cement mortar, brickwork, render, etc.
- For indoor and outdoor areas.
- Classified as adhesive type **C1**



**CONSUMPTION:** ≈ 1,5-4,0 kg/m<sup>2</sup>



CODE / 6	COLOR	PACKAGE	PCS./PAL.	PRICE / KG	UNIT PRICE
1.01.00.0410	White	25 kg	54 pcs./pal.		
1.01.00.0560	Grey	25 kg	54 pcs./pal.		

# Extra

## High-quality cement-based tile adhesive

- For fixing ceramic tiles on walls and floors.
- Ideal for surfaces made of concrete, cement mortar, brickwork, render, etc.
- Resistant to frost and humidity.
- No vertical slip and increased thixotropy during application.
- For indoor and outdoor areas.
- Classified as adhesive type **C2T**



**CONSUMPTION:** ≈ 1,5-4,0 kg/m<sup>2</sup>



CODE / 6	COLOR	PACKAGE	PCS./PAL.	PRICE / KG	UNIT PRICE
1.01.00.0500	White	5 kg	4 pcs./box 200 pcs./pal.		
1.01.00.0420	White	25 kg	54 pcs./pal.		
1.01.00.0530	Grey	25 kg	54 pcs./pal.		

## Super Acrylic

High-quality, polymer-modified cement-based tile adhesive

- For fixing granite tiles and generally absorbent or non-absorbent tiles on walls and floors.
- Ideal for surfaces made of concrete, cement mortar, brickwork, render, etc.
- Highly resistant to frost and humidity.
- Extended open time for faster and more secure installations.
- For indoor and outdoor areas.
- Classified as reinforced adhesive type **C2E**



**CONSUMPTION:** ≈ 1,5kg - 4,0kg/m<sup>2</sup>



CODE / 6	COLOR	PACKAGE	PCS./PAL.	PRICE / KG	UNIT PRICE
1.01.00.430	White	25 kg	54 pcs./pal.		
1.01.00.470	Grey	25 kg	54 pcs./pal.		

## Ultra Acrylic

High-quality, polymer-modified cement-based tile adhesive

- For fixing of all types of tiles, natural stones and large tiles on walls and floors.
- Ideal for surfaces made of concrete, cement mortar, brickwork, render, etc.
- Highly resistant to frost and humidity.
- No vertical slip and increased thixotropy during application.
- Extended open time for faster and more secure installations.
- Classified as reinforced adhesive type **C2TE**



**CONSUMPTION:** ≈ 1,5-4,0 kg/m<sup>2</sup>



CODE / 6	COLOR	PACKAGE	PCS./PAL.	PRICE / KG	UNIT PRICE
1.01.00.0450	White	25 kg	54 pcs./pal.		
1.01.00.0540	Grey	25 kg	54 pcs./pal.		

## Bauflex Fiber

High-quality, fiber-reinforced polymer-modified cement-based tile adhesive

- For high demands in adhesion and resistance to cracking, strong thermal expansion and contraction forces, frost and moisture.
- For fixing tiles and natural stones of all types and dimensions on walls and floors.
- Ideal for surfaces made of concrete, cement mortar, brickwork, render, under floor heating, swimming pools, etc.
- No vertical slip and extended open time for faster and more secure installations.
- **LOW DUST TECHNOLOGY** that minimizes floating dust when mixing it with water before application.
- Classified as reinforced adhesive type **C2TE S1**



**CONSUMPTION:** ≈ 1,5-4,0 kg/m<sup>2</sup>



CODE / 6	COLOR	PACKAGE	PCS./PAL.	PRICE / KG	UNIT PRICE
1.01.00.0510	White	5 kg	4 pcs./box 200 pcs./pal.		
1.01.00.0480	White	25 kg	54 pcs./pal.		
1.01.00.0550	Grey	25 kg	54 pcs./pal.		

## Bauflex Universal

High standard, flexible, cement based, polymer-modified tile adhesive

- Excellent adhesion to surfaces and high deformation factor.
- For high demands in adhesion and resistance to cracking, strong thermal expansion and contraction forces, frost and moisture.
- For fixing tiles and natural stones of all types, dimensions and weight on walls and floors.
- Suitable for very thick applications.
- Ideal for concrete surfaces, cement mortar, brickwork, renders as well as for substrates such as old tiles, under floor heating, mosaics, swimming pools, plasterboards, cement based sealants, etc.
- Provides great surface coverage, high thixotropy, extended open time for faster and more secure installations.
- Classified as reinforced adhesive type **C2TE S1**



**CONSUMPTION:** ≈ 1,3-4,0 kg/m<sup>2</sup>



CODE / 6	COLOR	PACKAGE	PCS./PAL.	PRICE / KG	UNIT PRICE
1.01.00.0490	White	23 kg	54 pcs./pal.		



## Bauflex Rapi-Gel NEW!

High standard, flexible, fast setting, polymer-modified cement based tile adhesive

- Excellent adhesion to surfaces and high deformation factor. For high demands in adhesion and resistance to cracking, strong thermal expansion and contraction forces, frost and moisture.
- For fixing tiles and natural stones of all types, dimensions and weight on walls and floors.
- Ideal for common or difficult to bond substrates such as old tiles, under floor heating, mosaics, swimming pools, plasterboards, cement based sealants, etc.
- Soft spreading, great surface coverage, high thixotropy extended open time for faster and more secure installations.
- Classified as reinforced adhesive type **C2TE S1**



**CONSUMPTION:** ≈ 1,5kg - 4,0kg/m<sup>2</sup>



CODE / 6	COLOR	PACKAGE	PCS./PAL.	PRICE / KG	UNIT PRICE
1.01.00.0570	White	25 kg	54 pcs./pal.		

## Hyper Flex

High standard, elastic, polymer-modified cement based tile adhesive

- Unsurpassed adhesion to surfaces and very high modulus in shear stresses.
- For very high resistance to cracking from thermal contraction and expansion, superior resistance to frost and humidity.
- For fixing of all types of tiles, all dimensions and weight on walls and floors.
- Ideal for demanding substrates such as old tiles, under floor heating, mosaics, swimming pools, plasterboards, cement based sealants, metal surfaces that require strong adhesion and flexibility.
- No vertical slip and extended open time for faster and more secure installations.
- Classified as reinforced adhesive type **C2TE S2**



**CONSUMPTION:** ≈ 1,5-4,0 kg/m<sup>2</sup>



CODE / 6	COLOR	PACKAGE	PCS./PAL.	PRICE / KG	UNIT PRICE
1.01.00.0460	White	25 kg	54 pcs./pal.		

# Perla

Reinforced, cement-based, water-repellent and high strength tile grout

- Unique color stability, unsurpassed mechanical strength.
- Bacteriostatic properties preventing the creation of bacteria.
- Resistant to dirt and easy to clean.
- Suitable for grouting ceramic tiles, ceramic granite, glass mosaic tiles and natural stone, for internal or external use on walls or floors.
- Quick filling of joints and very easy cleaning of residues.
- Classified as reinforced grout, waterproof and highly resistant to abrasion type **CG2 WA** in accordance with European standards **EN 13888**



CODE / 1	COLOR	PACKAGE	PCS./PAL.	PRICE / KG	UNIT PRICE
1.04.45.0010	White No.1	5 kg	4 pcs./box 200pcs./pal.		
1.04.45.0030	Light grey No.3				
1.04.45.0060	Manhattan No.6				
1.04.45.0070	Grey arzan No.7				
1.04.45.0020	Beige No.8	2 kg	8 pcs./box 400pcs./pal.		
1.04.45.0040	Ivory No.9				
1.04.45.0050	Bahama No.10				
1.04.45.0210	Ice white No.21			<b>NEW COLORS!</b>	
1.04.45.0250	Jasmine No.25				
1.04.45.0080	Dark grey No.4	5 kg	4 pcs./box 200pcs./pal.		
1.04.45.0090	Light brown No.11				
1.04.45.0100	Dark brown No.12				
1.04.45.0200	Caramel No.15	2 kg	8 pcs./box 400pcs./pal.		
1.04.45.0160	Ocher No.22				
1.04.45.0155	Olive Green No.23			<b>NEW COLORS!</b>	
1.04.45.0180	Cement grey No.24				
1.04.45.0260	Mocha No.26				
1.04.45.0110	Black No.2	5 kg	4 pcs./box 200pcs./pal.		
1.04.45.0120	Anthracite No.5				
1.04.45.0130	Terracotta No.16				
1.04.45.0140	Koto No.17	2 kg	8 pcs./box 400pcs./pal.		

## Estimated Consumption for Perla & EpogROUT (gr/m<sup>2</sup>)

Tile dimensions	g / m <sup>2</sup> joint width				
	1 MM	2 MM	3 MM	5 MM	8 MM
2 x 2 x 0,3	550	1.100	1.650	-	-
15 x 15 x 0,7	200	400	600	1.000	1.600
20 x 20 x 0,7	150	300	450	750	1.200
30 x 30 x 0,8	115	230	345	575	920
60 x 60 x 1,0	65	130	195	325	520
60 x 1200 x 1,0	50	100	150	250	400

# EpogROUT

## Epoxy based two component, solvent free tile grout

- Impermeable to water, anti-bacterial, high mechanical strength and chemical resistance.
- Excellent adhesion to surfaces.
- Suitable for horizontal or vertical surfaces.
- Soft spread and easy clean during application.
- Ideal for areas with strict hygiene protocols i.e. food industry, pharmaceutical industries, kitchens, pools, etc.
- **Form:** two components (A) Paste (B) Hardener.



CODE / 7	COLOR	PACKAGE	PRICE / KG	UNIT PRICE
1.01.10.0301	White No.1	3 kg		
1.01.10.0308	Beige No.8			
1.01.10.0303	Light grey No.3			
1.01.10.0302	Black No.2			
1.01.10.0304	Dark grey No.4			
1.01.10.0312	Dark brown No.12			
1.01.10.0315	Blue No.51			
1.01.10.0309	Ivory No.9			
1.01.10.0306	Manhattan No.6			
1.01.10.0311	Light brown No.11			
1.01.10.0307	Grey arzan No.7			
1.01.10.0316	Terracotta No.16			

# Perla Silicone

**NEW!**

## Coloured Silicone for grouting tiles

- Offers unique elasticity (e.g expansion joints etc.).
- Ideal for internal and external use.
- Suitable for grouting all types of tiles on any surface.
- Offers quick and easy application, as well as easy cleaning of any residues from the installation.



CODE / 3	COLOR	PACKAGE	PCS. / BOX	UNIT PRICE
5.01.05.1010	White No.1	280ml	25 pcs.	
5.01.05.1030	Light grey No.3	280ml	25 pcs.	
5.01.05.1040	Dark grey No.4	280ml	25 pcs.	
5.01.05.1070	Grey arzan No.7	280ml	25 pcs.	
5.01.05.1080	Beige No.8	280ml	25 pcs.	
5.01.05.1090	Ivory No.9	280ml	25 pcs.	
5.01.05.1260	Mocha No.26	280ml	25 pcs.	

## Decoset

High performance, coarse grained, cement based, polymer-modified adhesive for thick layer installations (up to 15-20mm)

- Suitable for fixing decorative bricks, natural stone, composite stone of all types, large tiles, ceramic tiles of all types, granite, etc.
- Also suitable for grouting.
- Ideal for surfaces made of concrete, cement mortar, brickwork, render, etc.
- Extended open time for faster and safer installations.



**CONSUMPTION:** ≈ 2,0-5,0 kg/m<sup>2</sup>



CODE / 1	COLOR	PACKAGE	PCS./PAL.	PRICE / KG	UNIT PRICE
1.01.00.0290	White	25 kg	48 pcs./pal.		
1.01.00.0300	Grey	25 kg	48 pcs./pal.		

## Petroblock

Special cement-based adhesive for light structural elements and aerated concrete blocks

- Suitable as a filler for joints and masonry troweling or worn structural elements.
- For indoor and outdoor use.
- Applicable on aerated concrete, bricks, cement blocks, lightweight concrete.



**CONSUMPTION:** ≈ 15-25 kg/m<sup>3</sup>



CODE / 1	COLOR	PACKAGE	PCS./PAL.	PRICE / KG	UNIT PRICE
1.01.00.0260	White	25 kg	48 pcs./pal.		

## Crystal

High performance antifungal polymer-modified adhesive for glass block tiles

- Also suitable for grouting glass brick tiles.



**CONSUMPTION:** ≈ 15kg - 20 kg/m<sup>2</sup>



CODE / 1	COLOR	PACKAGE	PCS./PAL.	PRICE / KG	UNIT PRICE
1.01.00.0280	White	5 kg	4 pcs./box 200 pcs./pal.		
1.01.00.0270	White	25 kg	48 pcs./pal.		

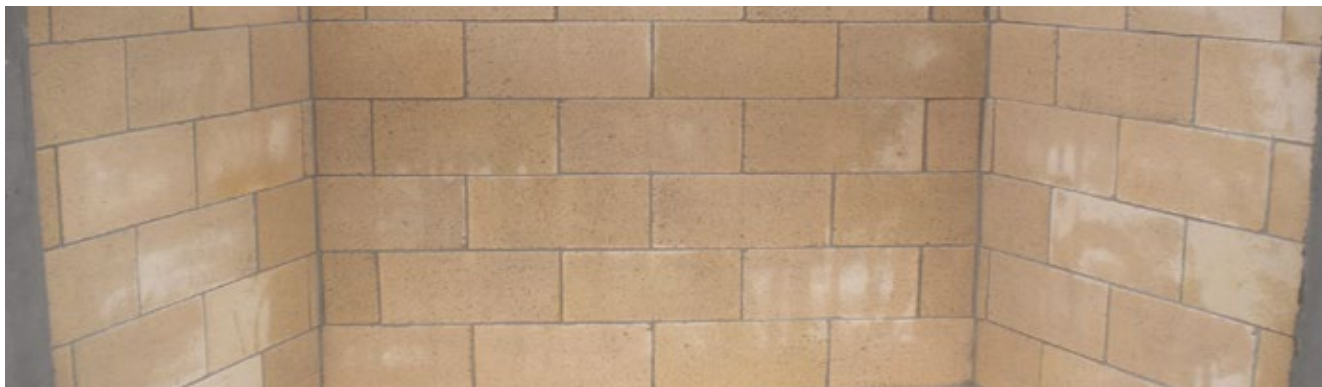
## Pyroflex

Special adhesive for firebricks and other refractory components

- Applied to all types of firebricks and materials requiring high temperature resistance (**Temperature resistance: 1.080 C°**).
- **Pyroflex** does not crack and can be used for grouting of the elements or repairing broken joints and firebricks.



**CONSUMPTION:** ≈ 15kg/m<sup>2</sup>



CODE / 1	COLOR	PACKAGE	PCS./PAL.	PRICE / KG	UNIT PRICE
1.01.10.0320	Grey	5 kg	4 pcs./box, 200 pcs./pal.		
1.01.00.0310	Grey	25 kg	48 pcs./pal.		

## Super-Grip

### High-tech, one-component water-based primer

- Suitable for enhancing adhesion of cementitious adhesives, mortars and self-leveling coatings.
- For absorbent and non-absorbent surfaces such as old tile layers, mosaics, industrial floors, metal floors, PVC flooring, etc.
- **Form:** acrylic emulsion.



**CONSUMPTION:** ≈ 0,2 kg/m<sup>2</sup>

CODE / 2	COLOR	PACKAGE	PCS./PAL.	PRICE / KG	UNIT PRICE
1.03.01.0550	Blue	1 kg	15 pcs./box		
1.03.01.0560	Blue	5 kg	112 pcs./pal.		
1.03.01.0570	Blue	20 kg	42 pcs./pal.		

## Acid cleaner for natural stones

### Special (acidic) cleaner for natural stone and fireplaces

- Cleans and restores the natural color of stone, removing any kind of residue such as dirt, soot (fireplace), dust, mold, grouting and general impurities that accumulate over time.
- For all natural stones. If in doubt about the type of surface, a trial in a small portion of the surface is recommended.
- Chemical composition: phosphoric acid solution and synthetic detergents.
- **Anionic surfactant content:** ≤5%. **Odor:** typical and subtle.



**CONSUMPTION:** ≈ 1 L/4-5m<sup>2</sup>

CODE / 1	COLOR	PACKAGE	PCS./PAL.	PRICE / KG	UNIT PRICE
1.02.00.0082	Trasparent	1 L	15 pcs./box		
1.02.00.0202	Trasparent	5 L	112 pcs./pal.		

## Acid cleaner for tiles

### Special (acidic) cleaner for ceramic tiles and grouts

- Drastically removes any kind of cement, plaster or lime remains as well as grouts, paints and other stains (including oil, beverages, etc). The tiles become perfectly clean and the colors of the grouts that have been altered by the weather are renewed.
- **Chemical composition:** phosphoric acid solution and synthetic detergents.
- **Anionic surfactant content:** ≤5%.



**CONSUMPTION:** ≈ 1 L/4-5m<sup>2</sup>

CODE / 1	COLOR	PACKAGE	PCS./PAL.	PRICE / KG	UNIT PRICE
1.02.00.0072	Blue	1 L	15 pcs./box		
1.02.00.0192	Blue	5 L	112 pcs./pal.		

## DRY 80/50 Uncoupling membrane

- Uncoupling membrane resistant to alkalis for waterproofing and tile adhesion on difficult to bond substrates.

CODE / 3	PACKAGE	PCS./PAL.	PRICE / m	PRICE / m <sup>2</sup>	UNIT PRICE
5.03.04.2520 Membrane Dry 80-0,8mm	Roll 1,5 x 30m (45m <sup>2</sup> )	30 Rolls/pal.			
5.03.04.2530 Membrane Dry 50-0,5mm	Roll 1,2 x 30m (36m <sup>2</sup> )	30 Rolls/pal.			
5.03.04.2540 Waterproofing strip joints	Roll 30m x 12,7cm	-			



# **THERMOKAPA**

External Thermal Insulation System Guide

# THERMOKAPA

Optimal durability in time and weather exposure

## Strength and endurance

Designed by **BAUER** to protect your building from any external influences for many decades.

## Protection against moisture & mold

High waterproofing & excellent building transpiration. Securing walls against water vapor condensation and mold.

## Maximum protection against cracking

The most effective renovation method for old facades with cracks or other problems, offering maximum elasticity, strength & protection for many decades by reducing structural element contractions and the appearance of new cracks.

## Energy saving

The most reliable investment with guaranteed profit for the entire building lifecycle.

### 1 KAPA 11 / ECOFLEX

Adhesives for fixing thermal plates to substrates, with a particularly high adhesion bonding for maximum safety.

### 2 BAUTHERM EPS 80

Expanded polystyrene ( $\lambda = 0,036 \text{ W / m} \cdot \text{K}$ ) and ( $\lambda = 0,03 \text{ W / m} \cdot \text{K}$ ) respectively. Certified for use in external thermal insulation systems.

### 3 KAPA 11 / ECOFLEX / ECOFLEX ORGANIC

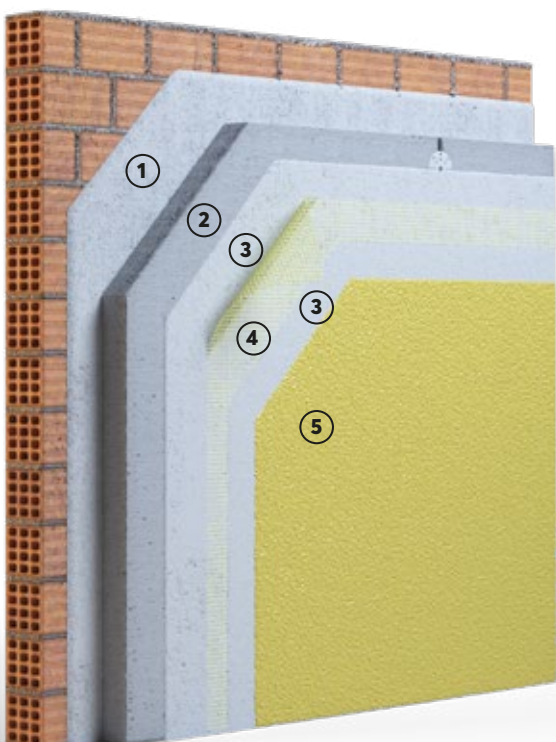
Organic and inorganic reinforcing plasters for fiberglass impregnation.

### 4 BAUMESH 160

High strength reinforcement fiberglass mesh specially designed for **THERMOKAPA** system resistant to alkalis and moisture.

### 5 MONOKAPA F / MONOKAPA R / KAPASIL F / GRANULATO

Ready to use, decorative, organic, highly elastic acrylic renders with top resistance to cracking, moisture, dirt and fungus.



Conforms to ETAG 004





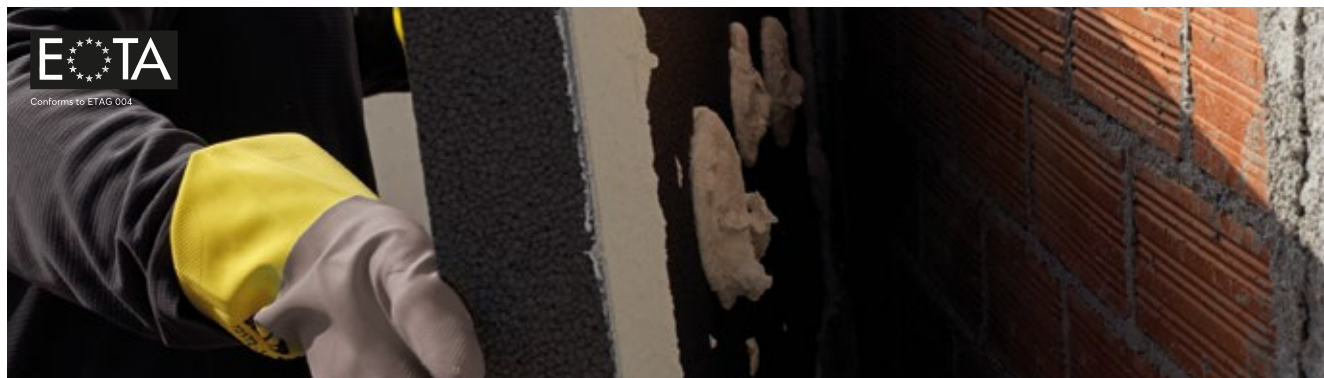
## Kapa 11

Polymer-modified, fiber-reinforced, cement-based adhesive and reinforcement coating, for installation of insulation plates of expanded polystyrene, mineral wool, etc.

- For building facades and floors.
- Kapa 11 offers superior adhesion, high resistance to shear stresses and guarantees adequate levels of bonding for many decades.
- The same material is used to cover insulation plates with the application of special fiberglass mesh as crack prevention, and as a reinforcement coating and substrate for topcoat renders in thermal insulation systems.
- No vertical slip and extended open time for safer application.



**CONSUMPTION:** ≈ 2 - 5 kg/m<sup>2</sup> as adhesive, ≈ 1,3 - 1,5 kg/m<sup>2</sup>/mm as reinforcement layer



CODE / 1	COLOR	PACKAGE	PCS./PAL.	PRICE / KG	UNIT PRICE
1.01.00.0370	White	25 kg	54 pcs./pal.		
1.01.00.0380	Grey	25 kg	54 pcs./pal.		

## Ecoflex Organic

Fiber reinforced, 100% acrylic, highly flexible, crack prevention reinforcement coating for thermal insulation boards of expanded and extruded polystyrene, mineral wool, etc.

- Limited contribution to fire class **B-s2, d2** in accordance to **EN 13501-1**
- For building facades.
- **Ecoflex Organic** is applied in combination with **BauMesh 160/160S** special alkali-resistance fiberglass mesh, and offers superior adhesion, high mechanical resistance to impact forces and guarantees adequate levels of resistance for many decades.
- Ideal substrate for topcoat renders in thermal insulation systems.
- Characterized by high elasticity and moisture resistance.
- **Form:** organic based paste, ready to use.



**CONSUMPTION:** ≈ 1,5 kg/m<sup>2</sup>/mm as fiberglass mesh reinforcement layer



CODE / 1	COLOR	PACKAGE	PCS./PAL.	PRICE / KG	UNIT PRICE
1.01.00.0390	White	25 kg	24 pcs./pal.		

## Pro 101

### Primer for preparation of paints and colored renders

- With high penetrating ability.
- Offers an ideal substrate for colored plasters, acrylic renders and organic binder coatings such as **Kapalux**, **Monokapa**, **Kapasil**, **Granulato** and **Plaster fin**.
- Suitable for porous substrates such as render's base layer, concrete, bricks, aerated concrete, cementitious adhesives, cement mortars, etc.



**CONSUMPTION:** ≈ 0,1-0,2 kg/m<sup>2</sup>



CODE / 2	COLOR	PACKAGE	PCS./PAL.	PRICE / KG	UNIT PRICE
1.03.01.0390	White	1 kg	15 pcs./box		
1.03.01.0410	White	5 kg	112 pcs./pal.		
1.03.01.0400	White	20 kg	42 pcs./pal.		
1.03.01.0430	White	10 kg (Container)	44 pcs./pal.		

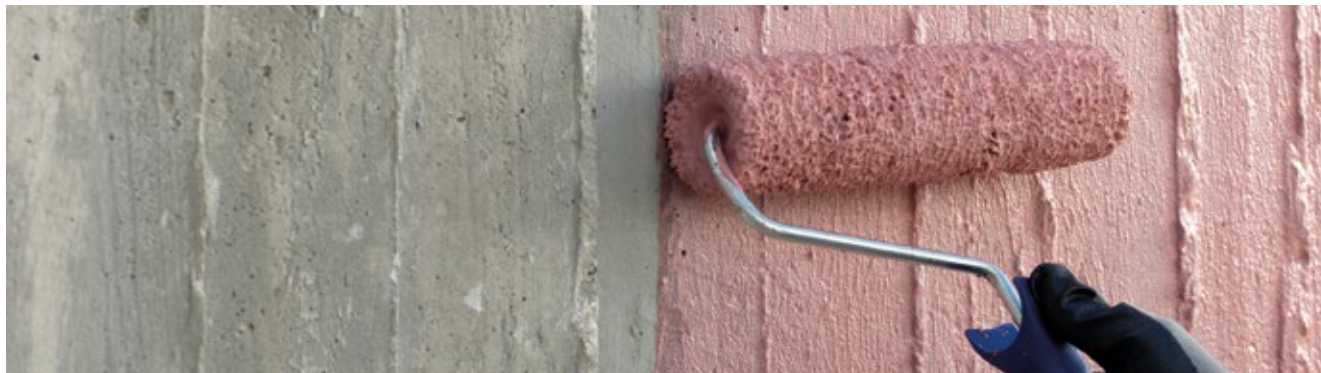
## Kapagrip

### Primer consisting of synthetic resin and quartz sand

- Used for priming surfaces instead of render base coat, in order to increase adhesion.
- Ideal substrate for all acrylic renders and cement mortars.
- Suitable for indoor and outdoor use.
- **Form:** acrylic emulsion with quartz sand.



**CONSUMPTION:** ≈ 0,1-0,2 kg/m<sup>2</sup>



CODE / 2	COLOR	PACKAGE	PCS./PAL.	PRICE / KG	UNIT PRICE
1.03.01.0610	<b>NEW!</b> Red	1 kg	12 pcs./box		
1.03.01.0660	Red	5 kg	75 pcs./pal.		
1.03.01.0670	Red	20 kg	24 pcs./pal.		
1.03.01.0630	White	5 kg	75 pcs./pal.		
1.03.01.0640	White	20 kg	24 pcs./pal.		
1.03.01.0650	Colored	20 kg	24 pcs./pal.		

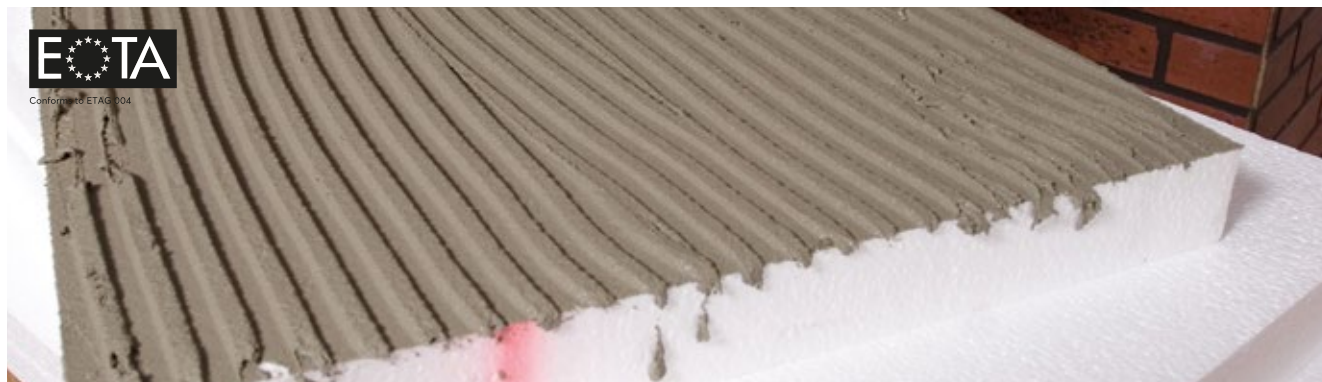
## Bautherm W

### Expanded polystyrene

- Certified plates for specific use in external thermal insulation systems, EPS 80 (ETICS) EPS 80 with CE mark in thicknesses of 3,5,6,7,10cm
- Coefficient of thermal conductivity:  $\lambda = 0,036 \text{ W / m} \cdot \text{K}$
- Resistance to fire: Class E
- Water vapor permeability resistance:  $\mu$  20-30



\* Available in various thicknesses and densities (EPS 100,200) upon request



CODE / 5	COLOR	THICKNESS	m <sup>2</sup> / PACK	PRICE / PACK	PRICE / m <sup>2</sup>
5.03.04.5030	White	30 mm	9,6		
5.03.04.5050	White	50 mm	6,0		
5.03.04.5060	White	60 mm	4,8		
5.03.04.5070	White	70 mm	4,2		
5.03.04.5100	White	100 mm	3,0		

## Bautherm G

### Graphite expanded polystyrene

- Certified plates for specific use in external thermal insulation, EPS 80 systems (ETICS) EPS 80 with CE mark in thicknesses of 3,5,6,7,10cm
- Coefficient of thermal conductivity:  $\lambda = 0,030 \text{ W / m} \cdot \text{K}$
- Resistance to fire: Class E
- Water vapor permeability resistance:  $\mu$  20-30



\* Available in various thicknesses and densities (EPS 100,150) upon request



CODE / 5	COLOR	THICKNESS	m <sup>2</sup> / Pack	PRICE / PACK	PRICE / m <sup>2</sup>
5.03.04.5230	Grey	30 mm	9,6		
5.03.04.5250	Grey	50 mm	6,0		
5.03.04.5260	Grey	60 mm	4,8		
5.03.04.5270	Grey	70 mm	4,2		
5.03.04.5210	Grey	100 mm	3,0		

## Baumesh 160 / 160 S

High-strength fiberglass mesh with a protective coating of special polymers, highly resistant to alkaline environments

- For total or partial reinforcement of renders and waterproofing layers.
- Specially designed for external thermal insulation systems as well as for total or partial reinforcement of sealants (e.g. epoxy, polyurethane, acrylic resins and cement mortar and lime).
- Provides significant structural reinforcement and prevents cracking from thermal expansion and contraction.
- **Mesh width:** 4,5 x 4,5 mm ± 0.2
- **Weight (g /m²):** raw net 160 g /m² ± 5%
- **Coating (g /m²):** 26 g /m² ± 5%



CODE / 3	COLOR	PACKAGE	PCS./PAL.	PRICE / m²	UNIT PRICE
5.03.04.2020	Yellow 160	50m x 1m = 50m²	30 pcs./pal.		
5.03.04.2120	Yellow 160 S	50m x 1m = 50m²	33 pcs./pal.		

## ETICS Adhesion foam & Pistol cleaner

NEW!

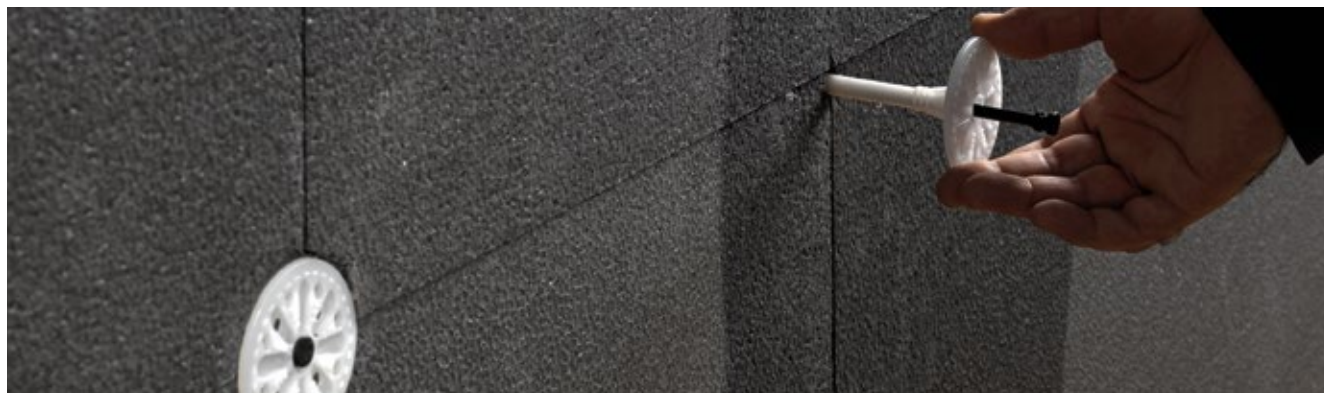
Low expansion foam for installing thermal insulation boards and pistol cleaner

- Hardens with atmospheric humidity and has extremely low expansion.
- Ideal for installing thermal insulation boards of **EPS** and **XPS**
- Excellent adhesion to all types of building materials.
- Easy and accurate application with the use of pistol.
- Resistant to ageing and moisture.



CODE / 3	DESCRIPTION	PACKAGE	PCS. / BOX	UNIT PRICE
5.01.05.0900	Adhesion foam	750ml (Pistol)	12 pcs.	
5.01.05.0910	Pistol cleaner	500ml (Pistol)	12 pcs.	

## Fixtures for thermal insulation system



CODE / 3	PRODUCT	PCS. / BOX	PRICE / PCS.	PRICE BOX
5.03.04.7100	8 / 110 (3-5cm Plate)	100 pcs./box		
5.03.04.7101	<b>NEW!</b> 8 / 130_ (5-7cm Plate)	100 pcs./box		
5.03.04.7102	8 / 150_ (7-10cm Plate)	100 pcs./box		
5.03.04.7023	10 / 90_ (3cm Plate)	250 pcs./box		
5.03.04.7020	10 / 120_ (3-6cm Plate)	250 pcs./box		
5.03.04.7021	10 / 140_ (5-8cm Plate)	250 pcs./box		
5.03.04.7104	for wood THERMOFIX 6H 100	100 pcs./box		
5.03.04.7105	for metal THERMOFIX B 110	100 pcs./box		

### Complementary thermal insulation products

CODE / 3	PRODUCT	PCS. / BOX	PRICE / PCS.	PRICE BOX
5.03.04.7030	Cornerbead PVC 10x15 2,5m	50 pcs./box		
5.03.04.7040	Cornerbead with waterdrip PVC 2,5m	20 pcs./box		
5.03.04.6100/10/30	Starting guide AL 30-50-70mm 2,5m	10 pcs./box		
6.00.00.0011	Color chart 1.000 Colors	1 pcs.		
6.00.00.0016	Color chart 260 Colors	1 pcs.		

## Aquasil Flex

Flexible, two- component brushable cement based sealing mortar

- For complete and permanent waterproofing of concrete, brickwork, plasters.
- Ability to bridge surface cracks.
- Ideal for waterproofing surfaces that show or are expected to show hairline cracks due to thermal contractions-expansions or vibrations like surfaces to be covered with tiles on balconies, terraces, pools and bathrooms, inverted roof insulation, walls and floors of basements, tanks, wells, canals, etc.
- Endures positive and negative hydrostatic pressure and the surface remains water vapor permeable.
- Suitable for contact with drinking water.
- **Application thickness (2 coats):** ≤ 5mm and ≥ 2mm



**CONSUMPTION:** 2-4 kg/m<sup>2</sup>



CODE / 2	COLOR	PACKAGE	PCS./PAL.	PRICE / KG	UNIT PRICE
1.01.02.0170	Grey	33 kg (A+B)	Bags 48 pcs./pal., Containers 48 pcs./pal.		

## Monokapa Flex

Ready to use, highly-flexible, decorative organic render

- Limitless color options and many final surface texture options.
- Monokapa render is 100% acrylic and offers excellent adhesion to all substrates as well as high resistance to sunlight, cracks, water and moisture, pollutants, algae and fungi.
- Allows for the transpiration of structural elements and is ideal as a final covering in external thermal insulation systems.
- **Form:** pasty acrylic render.
- **Available grain sizes:** Fine (F) 0,8/1,0/1,5/2,0mm Graffiato (R) 1,5/2,0mm



**CONSUMPTION:** 0,8 mm ≈ 1,44kg/m<sup>2</sup> - 1,0 mm ≈ 1,8 kg/m<sup>2</sup> - 1,5mm ≈ 2,7 kg/m<sup>2</sup> - 2,0 mm ≈ 3,0 kg/m<sup>2</sup>



CODE / 1	COLOR	GRANULOMETRY	PACKAGE	PCS. /PAL.	PRICE / KG	UNIT PRICE
1.01.01.5010	White	0,8 / 1,0 / 1,2 / 1,5 / 2,0 mm F 2,0 mm R	25 kg	24 pcs./pal.		
1.01.01.5000	1.000 colors	0,8 / 1,0 / 1,2 / 1,5 / 2,0 mm F 2,0 mm R	25 kg	24 pcs./pal.		
1.01.01.4500.0	White / colors		3 kg			

## Kapasil

Ready to use, silicon-based, water repellent and self-cleaning organic render

- Limitless color options.
- Provides excellent adhesion to all substrates and extremely high resistance to water, moisture, sunlight, cracks, pollutants, algae and fungi.
- Allows for the transpiration of structural elements and is ideal as a final covering in external thermal insulation systems.
- Non combustible class **A2-s1, d2** in accordance to **EN 13501-1**
- **Form:** pasty silicone acrylic render.
- **Available grain size:** Fine (F) 1,0/1,5 mm.



**CONSUMPTION:** 1,0mm ≈ 1,8 kg/m<sup>2</sup> - 1,5mm ≈ 2,7kg/m<sup>2</sup>



CODE / 1	COLOR	GRANULOMETRY	PACKAGE	PCS. /PAL.	PRICE / KG	UNIT PRICE
1.01.01.2250	White	1,0 / 1,5 mm F	25 kg	24 pcs./pal.		
1.01.01.2250.1	1.000 colors	1,0 / 1,5 mm F	25 kg	24 pcs./pal.		
1.01.01.2200.0	White / colors		3 kg			



# Granulato

Ready to use acrylic render with special colored quartz aggregates

- With specially classified granulometry to create a rough decorative surface in many color options.
- Ideal for both indoor and outdoor surface decorations.
- Suitable for exterior building facades, even for high-rise buildings exposed to large quantities of rain water.
- UV radiation resistance, high elasticity, full water repellency and excellent transpiration properties
- **Compatible substrates:** concrete, mortar, gypsum plasterboard, wood, metal, MDF, etc.
- **Form:** pasty render of quartz.



**CONSUMPTION:** ≈ 3,5 - 4,0 kg/m<sup>2</sup>



CODE / 1	COLOR	PACKAGE	PCS./PAL.	PRICE / KG	UNIT PRICE
1.01.01.9010	12 colors	23 kg	24 pcs./pal.		

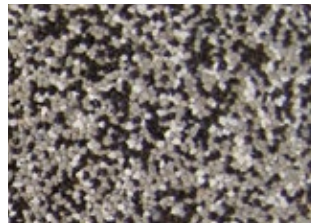
## Granulato Colors



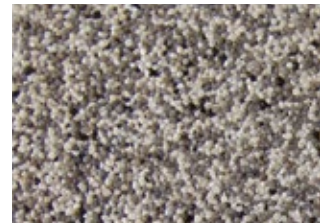
017



024



031



093



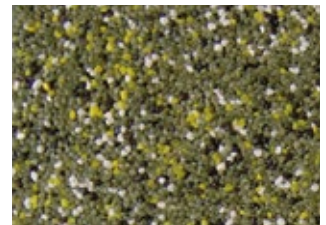
123



307



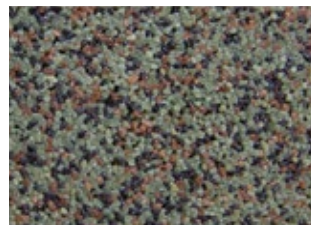
147



260



291



277



130



284





# **Renders & Plasters**

## Malta Star NEW!

### Reinforced, waterproof, white top-coat render

For interior and exterior applications. Applied on brick walls and concrete that have been properly prepared with base coat render. It offers excellent adhesion, leading resistance to extreme climatic conditions and excellent component transpiration.

#### Malta Star

**Form:** Cementitious dry mortar with maximum grain size 1,20 mm (as the traditional marble render).

**Maximum application thickness:** 5 mm

**CONSUMPTION:** ≈ 7 kg / m<sup>2</sup> / 5mm

#### Plaster Graffiato

**Form:** Cementitious dry mortar with maximum grain size 3 mm.

**Maximum application thickness:** 3-4 mm.

**CONSUMPTION:** ≈ 6 kg / m<sup>2</sup> / 4mm



*\*Can be produced in many colors upon request (minimum quantity 1.500 kg)*



CODE / 1	COLOR	PACKAGE	PCS./PAL.	PRICE / KG	UNIT PRICE
1.01.01.1030	White	25 kg	60 pcs./pal.		
1.01.01.1010	White Graffiato	25 kg	60 pcs./pal.		

## Malta Plus NEW!

### Reinforced polymer modified water-repellent, white top coat render

- For indoor and outdoor applications.
- Applied on brick walls and concrete that have been properly prepared with base coat render.
- It offers excellent adhesion, leading resistance to extreme climatic conditions and excellent component transpiration.
- Applied by hand or rendering machine with excellent workability.
- **Maximum grain:** 1.30 mm (as the traditional marble render).
- **Maximum application thickness:** 5mm

**CONSUMPTION:** ≈ 7 kg / m<sup>2</sup> / 5mm

*\*Can be produced in many colors upon request (minimum quantity 1.500 kg)*



CODE / 1	COLOR	PACKAGE	PCS./PAL.	PRICE / KG	UNIT PRICE
1.01.01.1040	White	25 kg	60 pcs./pal.		

## Malta Uno

### One-coat, reinforced white render

- For interior and exterior applications.
- Applied in a maximum thickness of 3cm on walls made of bricks and concrete that have been properly prepared with base coat render or Kapagrip primer.
- It offers excellent adhesion, leading resistance to extreme climatic conditions and excellent component transpiration.
- Applied by hand or rendering machine with excellent workability.
- **Maximum grain:** 1.30 mm (as the traditional marble render).
- **Maximum application thickness:** 3cm



**CONSUMPTION:** ≈ 13 kg/m<sup>2</sup>/cm

\*Available in many colors upon request (minimum quantity 1.500 kg)



CODE / 1	COLOR	PACKAGE	PCS./PAL.	PRICE / KG	UNIT PRICE
1.01.01.1020	White	25 kg	60 pcs./pal.		

## Plaster Fix

### Fast setting, white resinous plaster for a wide variety of repairs

- For repairing damaged corners, filling cracks, shaping broken plasters and restoring damages caused by plumbers, carpenters, electricians, etc.
- **Advantages:** Quick plaster repairs - excellent workability - high mechanical strength -excellent adhesion - no visible splices.
- **Form:** Cementitious dry mortar with maximum grain size 1,30mm (as the traditional marble plaster).



**CONSUMPTION:** ≈ 15kg/m<sup>2</sup>/cm layer thickness



CODE / 1	COLOR	PACKAGE	PCS./PAL.	PRICE / KG	UNIT PRICE
1.01.01.1150	White	5 kg	4 pcs./box 200 pcs./pal.		
1.01.01.1050	White	25 kg	48 pcs./pal.		

## Bau - Resina

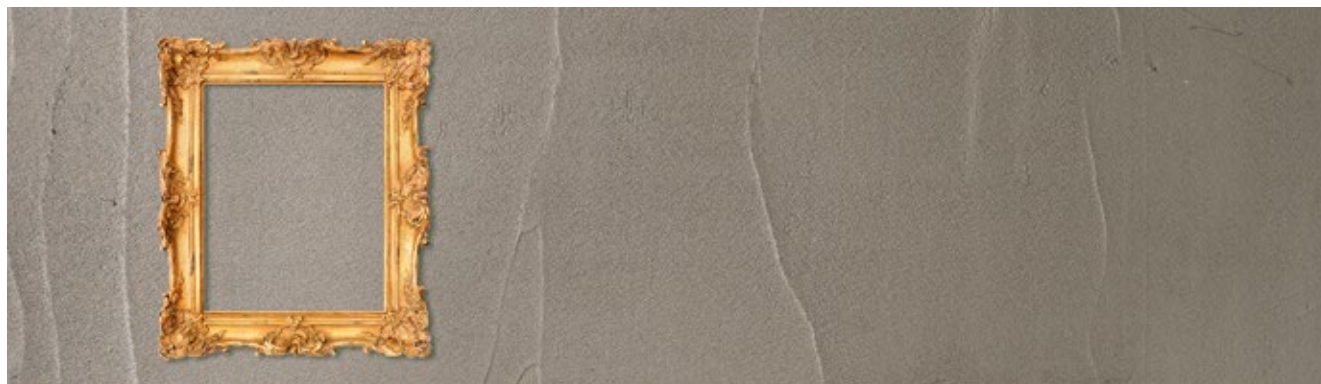
### Microcement mortar of unique aesthetic result

- Unique aesthetic wall and floor lining material.
- Thin thickness (2-4mm), cement base, and quartz in various colors to create a stable high-strength concrete surface finish.
- Environmentally friendly natural product free of solvents and other harmful volatile substances.
- Soft and smooth finish making it ideal for modern and minimalist spaces.
- Applies to all types of hard surfaces.

To enhance adhesion and elasticity you can optionally use, instead of water, component B (resin) which is packaged in predetermined mixing ratio cartridges.



**CONSUMPTION:** ≈ 4 kg (A+B) / m<sup>2</sup> for two layers ≈ 1,5mm / layer



CODE / 1	COLOR		PACKAGE	PRICE / KG	UNIT PRICE
1.01.01.3000	White	<b>NEW!</b>	A - 25 kg B - 8 kg		
A+B=33 kg					

## Baucolor

### Mineral oxide, inorganic powder pigment

- For coloring **BAU RESINA** microcement mortar.
- For coloring coatings, concrete and cement mortars
- Add to dry cement mix with aggregate before mixing it with water.
- For indoor and outdoor areas, grouting and pavers.



CODE / 3		COLOR	PACKAGE	PCS. / BOX	UNIT PRICE
1.14.00.0031	<b>NEW!</b>	K	Ocher	0,25kg (5 pcs. in 50g bags)	9 pcs./box
1.14.00.0032		B	Black	0,25kg (5 pcs. in 50g bags)	9 pcs./box
1.14.00.0033		L	Light brown	0,25kg (5 pcs. in 50g bags)	9 pcs./box
1.14.00.0034		D	Dark brown	0,25kg (5 pcs. in 50g bags)	9 pcs./box
1.14.00.0035		G	Green	0,25kg (5 pcs. in 50g bags)	9 pcs./box
1.14.00.0036		C	Blue	0,25kg (5 pcs. in 50g bags)	9 pcs./box

\* 36 color options available (see p. 61)

## Bau Resina Colors

The final color is easily achieved by adding the proper amount of pigments to the white mortar. The codes listed in the chart display the color choice of pigments and the number of standard packages (bags of 50g) to be mixed with **25kg** of white mortar **Bau Resina**.

**PIGMENT CODES**      **B** - BLACK      **L** - LIGHT BROWN      **G** - GREEN  
                                  **K** - OCHER      **D** - DARK BROWN      **C** - BLUE

*E.g. Code B4-C1 indicates the use of 4 packs of 50g black pigment (B) and 1 pack of 50g blue pigment (C).*

<b>B4-K2-L4</b>	<b>K4-D5-L1</b>	<b>K4-D3-L1</b>	<b>B3-K1-G5</b>	<b>B3-K2-G5</b>	<b>B1-K1-G2</b>
<b>B8-K1-L8</b>	<b>B5-K2-D2</b>	<b>B1-K1-D1-G1</b>	<b>B5-C1</b>	<b>B4</b>	<b>B2</b>
<b>B4-K4-L4</b>	<b>B2-K1-L2</b>	<b>B1-K1-L1</b>	<b>B3-D3</b>	<b>B2-D2</b>	<b>B2-L1</b>
<b>B4-K1-L1-G4</b>	<b>B2-K1-L1-G2</b>	<b>B1-K2</b>	<b>B5</b>	<b>B4-C1</b>	<b>B5-G1</b>
<b>B4-K2</b>	<b>B1-K1-D1-G3</b>	<b>B1-K1</b>	<b>B2-G3</b>	<b>B2-G2</b>	<b>B1-G2</b>
<b>B5-K1-G2</b>	<b>B2-K1-G2</b>	<b>B1-K1-G1</b>	<b>B8-K1-L5</b>	<b>B1-L1</b>	<b>B1-D1</b>

**Note:**

The colors presented herein may slightly vary from the final result due to paper printing limitations.

## Bausil

### Acrylic varnish for waterproofing microcement mortar

- Water repellent matt transparent impregnation without solvents for complete waterproofing and stabilization of micro cement mortar surfaces.
- It does not cause color changes.
- Ensures good water vapor permeability of substrates.
- Protects application surfaces from the effects of pollutants.
- Easy and fast application.
- Very high penetration and water repellency.
- Suitable for interior and exterior surfaces.



**CONSUMPTION:** ≈ 0,20-0,30 kg / m<sup>2</sup>



CODE / 2	COLOR	PACKAGE	PRICE / KG	UNIT PRICE
1.03.01.0160	Trasparent	1 kg		
1.03.01.0170	Trasparent	5 kg		
1.03.01.0180	Trasparent	20 kg		

## Hardox PU Clear Coat

### Transparent polyurethane 2 component varnish, matt or glossy

- Water repellent, matt transparent aliphatic agent of two components, for complete waterproofing of micro cement mortar surfaces, and protection of metal or stone surfaces as well as UV protection for Hardox P25 pool paint.
- It does not turn yellow. Suitable for interior and exterior surfaces.



**CONSUMPTION:** ≈ 70-150 g/m<sup>2</sup>



CODE / 7	COLOR	PACKAGE	PRICE / KG	UNIT PRICE
1.01.03.9120 / 9140	Transparent matt or gloss	3 kg		
1.01.03.9130 / 9150	Transparent matt or gloss	9 kg		



# **Industrial Flooring**

## Hardox Level Fast NEW!



Ready to use mortar for floor screeds with controlled shrinkage, normal-setting and fast drying (lay ceramic tiles after 24h)

- Excellent adhesion to concrete and high mechanical strength.
- Ideal for filling, leveling and creating slopes on floors that are to be covered and the completion of the installation is required to be done in a short time.
- Tiles installation in 24h, wood and resilient floor in 4 days.
- Smooth final surface.
- Suitable for indoor and outdoor applications.
- **Application thickness:** 10-80mm per layer.
- Classification in accordance to **EN 13813** as **CT – C30 – F6**

**CONSUMPTION:** ≈ 18-20 Kg/m<sup>2</sup>/cm per layer



CODE / 1	COLOR	PACKAGE	PCS./PAL.	PRICE / KG	UNIT PRICE
1.01.03.0010	Grey	25 kg	60 pcs./pal.		

## Hardox Mix NEW!



Special hydraulic binder with normal setting, fast drying (4 days) and controlled shrinkage for floor screeds

- Hydraulic binder that replaces the cement in floor screeds.
- Ideal for filling, leveling and creating slopes on floors that are to be covered and the completion of the installation is required to be done in a short time.
- Installation of coating between 1-4 days depending on the type of coating.
- Suitable for indoor and outdoor applications.
- Excellent adhesion to concrete and high mechanical strength.
- **Application thickness:** 20-80mm per layer.

**CONSUMPTION:** ≈ 2,0-3,0 Kg/m<sup>2</sup>/cm per layer



CODE / 1	COLOR	PACKAGE	PCS./PAL.	PRICE / KG	UNIT PRICE
1.01.03.0010	Grey	20 kg	48 pcs./pal.		



## Hardox Flu-300

### Fast-setting self-leveling flooring screed

- With prolonged workability and compensated shrinkage.
- Ideal for layers **2-30mm**
- Used for smoothing and leveling uneven floors, with fast setting and excellent workability, especially indoors.
- Can be covered with carpet, marble, natural stone, parquet, wooden floors, rubber, PVC, resins, textile coating, ceramic tiles of all types.
- Can remain as final surface on domestic floors such as warehouses, basements and attics.
- Classified as a cement-based floor covering material for interior use type **CT-C35-F10-AR2** according to the European standard **EN 13813**



**CONSUMPTION:** ≈ 16 kg/m<sup>2</sup>/cm



CODE / 1	COLOR	PACKAGE	PCS./PAL.	PRICE / KG	UNIT PRICE
1.01.03.0030	Grey	25 kg	48 pcs./pal.		

## Hardox Extra

### Quartz sand cement-based surface hardener for high quality industrial concrete floors

- Ideal for extremely demanding surfaces in mechanical strength and abrasion resistance.
- **Application examples:** Industrial floors, food industry facilities, flooring/surfaces with increased heavy vehicle traffic, loading and unloading areas, ramps, warehouses, parking lots, sidewalks, machine shops, shopping malls, etc.



**CONSUMPTION:** ≈ 3-5 kg/m<sup>2</sup>



CODE / 1	COLOR	PACKAGE	PCS./PAL.	PRICE / KG	UNIT PRICE
1.01.03.1000	Grey	25 kg	60 pcs./pal.		
1.01.03.1020	Terracotta*	25 kg	60 pcs./pal.		
1.01.03.1010	Ocher*	25 kg	60 pcs./pal.		
1.01.03.1040	White*	25 kg	60 pcs./pal.		

\* Available for orders upon request (600kg minimum quantity)

## Bau Cure NEW!

### Polymer modified curing agent for fresh concrete

- Protects fresh concrete from quick evaporation of mixing water.
- Decreases the setting shrinkage of concrete.
- Ensures that concrete will achieve the anticipated strength.
- Reduces surface-dusting, after the concrete has set.
- Reduces the possibility of showing hair cracks.



**CONSUMPTION:** ≈ 0.15 - 0.20 Kg/m<sup>2</sup> \* Consumption depends on the environmental conditions.



CODE / 1	COLOR	PACKAGE	PCS./PAL.	PRICE / KG	UNIT PRICE
1.03.01.0600	Trasparent (dry)	20 kg	42 pcs./pal.		
1.03.01.0590	Trasparent (dry)	120 kg (Barrel)	5 pcs./pal.		

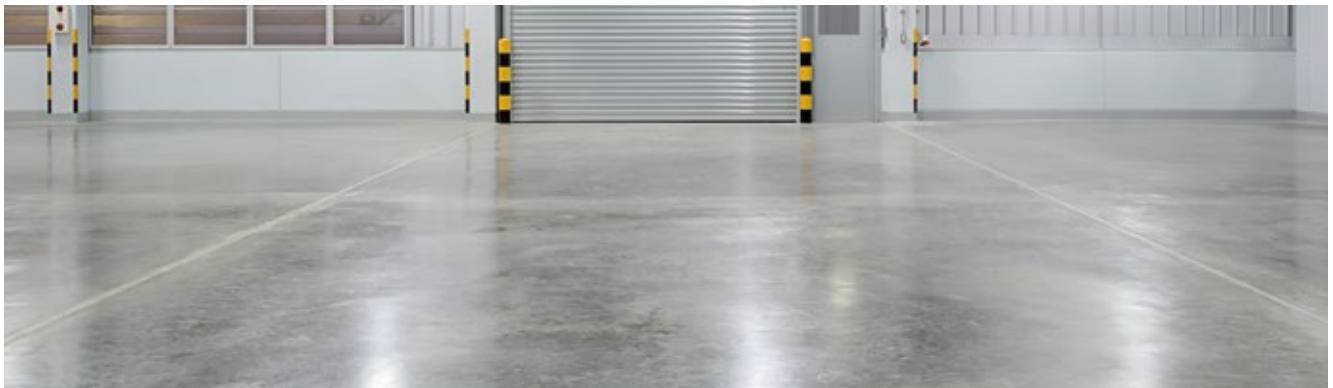
## Hardox S36 NEW!

### Concrete hardening impregnation

- Water-based impregnation emulsion, based on acrylic resins and silicates.
- Improves surface strength and reduces dust emission.
- Enhances surface absorbency in concrete floors.



**CONSUMPTION:** ≈ 0.15 - 0.25 Kg/m<sup>2</sup> \* Consumption depends on the substrates absorbency and surface etc.



CODE / 1	COLOR	PACKAGE	PCS./PAL.	PRICE / KG	UNIT PRICE
1.01.03.9110	Trasparent (dry)	20 kg	42 pcs./pal.		

## Hardox 11

Two-component, solvent free, transparent epoxy primer for industrial flooring

- For priming concrete surfaces to be covered with epoxy coatings.
- As a leveling mortar with quartz sand.
- For absorbent and non-absorbent inorganic concrete substrates, cement mortars, etc.
- **Viscosity:** 490 MPa x s
- **Workability time:** Temperature / time + 10°C → ≈65 min, + 20°C → ≈40 min, +30°C → ≈18 min.



**CONSUMPTION:** ≈ 200-250 g/m<sup>2</sup>



CODE / 7	COLOR	PACKAGE	PCS./PAL.	PRICE / KG	UNIT PRICE
1.01.03.9010	Transparent	9 kg (A+B)	48 pcs./pal.		

## Hardox 01 S

Two-component, solvent based, transparent epoxy primer for industrial flooring

- For priming concrete surfaces to be covered with epoxy layers
- For absorbent and non-absorbent inorganic concrete substrates, cement mortars, etc.



**CONSUMPTION:** ≈ 200-300 g/m<sup>2</sup>



CODE / 7	COLOR	PACKAGE	PCS./PAL.	PRICE / KG	UNIT PRICE
1.01.03.9030	Grey	8 kg (A+B)	48 pcs./pal.		

## Aqua Primer

Two-component, water-based, transparent epoxy primer for industrial flooring

- For priming concrete surfaces to be covered with epoxy coatings and as substrate of **Monoflex PU** in concrete with lightweight moisture.
- For absorbent and non-absorbent inorganic concrete substrates, cement mortars, etc.



**CONSUMPTION:** ≈ 0,2-0,3 kg/m<sup>2</sup>



CODE / 7	COLOR	PACKAGE	PRICE / KG	UNIT PRICE
1.01.03.9080	Pale Yellow	8 kg (A+B)		

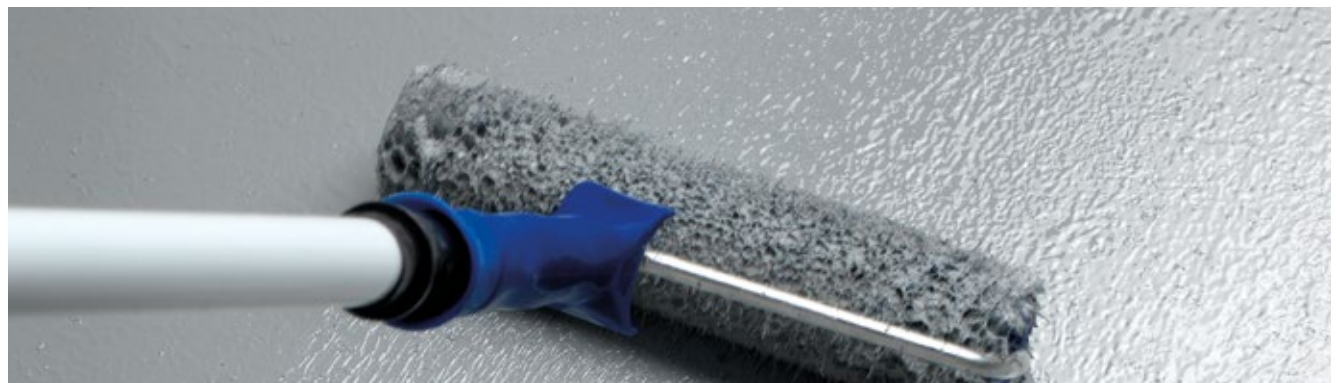
## Hardox P25

Colored epoxy floor paint system with solvents

- Suitable for fountains and swimming pools.
- **Chemical basis: (A) component:** epoxy resin, **(B) component:** hardener.
- **Colours:** RAL 5012, RAL 9003, \*RAL 1014, RAL 1015, RAL 7035, RAL 7040.



**CONSUMPTION:** ≈ 300 g/m<sup>2</sup> in two layers \*Can be produced in many colors upon request (minimum quantity 100 kg)



CODE / 7	COLOR	PACKAGE	PRICE / KG	UNIT PRICE
1.01.03.7090	RAL 5012, RAL 9003, *RAL 1014, *RAL 1015, *RAL 7035, *RAL 7040	9 kg		

## Hardox 360

### Self-leveling solvent-free epoxy coating for industrial floors

- For use as self leveling system in 2-3mm by adding 1/1 quartz sand.
- For use as a non-slip 3-4mm coating or a resin mortar.
- Ideal for highly demanding installation requirements in mechanical strength and abrasion, for liquid processing areas.
- Application examples: Production and storage areas, food and beverage industries, parking lots, etc.
- **Chemical basis: (A) component:** Epoxy resin **(B) component:** hardener.



**CONSUMPTION:** ≈ 0,8 kg/m<sup>2</sup>/mm



CODE / 7	COLOR	PACKAGE	PCS./PAL.	PRICE / KG	UNIT PRICE
1.01.03.4010	RAL 7032, RAL 7035, RAL 7040, RAL 1014, RAL 1015, RAL 5012	20 kg (A+B)	18 pcs./pal.		

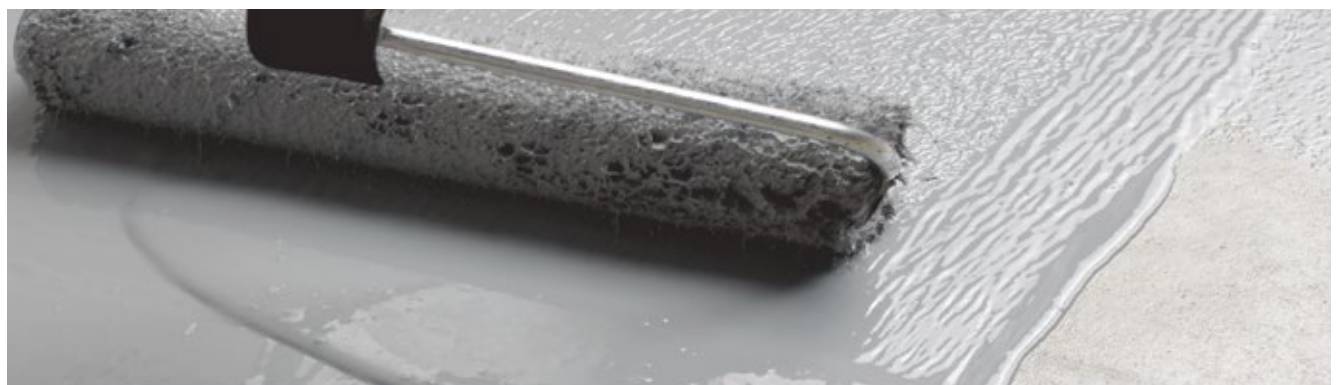
## Hardox P22

### Colored epoxy floor paint system without solvents

- Ideal for highly demanding installation requirements in mechanical strength and abrasion, for liquid processing areas.
- **Application examples:** Production and storage areas, food and beverage industries, parking lots, etc.
- **Chemical basis: (A) component:** Epoxy resin **(B) component:** hardener.



**CONSUMPTION:** ≈ 300-500 g/m<sup>2</sup>



CODE / 7	COLOR	PACKAGE	PCS./PAL.	PRICE / KG	UNIT PRICE
1.01.03.6000	RAL 7032, RAL 7035, RAL 7040, RAL 1014, RAL 1015, RAL 5012	20 kg (A+B)	18 pcs./pal.		

## Hardox PU Clear Coat

### Transparent polyurethane 2 component varnish, matt or glossy

- Water repellent, matt transparent aliphatic agent of two components, for complete waterproofing of micro cement mortar surfaces, and protection of metal or stone surfaces as well as UV protection for Hardox P25 pool paint.
- It does not turn yellow. Suitable for interior and exterior surfaces.



**CONSUMPTION:** ≈ 70-150 g/m<sup>2</sup>



CODE / 1	COLOR	PACKAGE	PRICE / KG	UNIT PRICE
1.01.03.9120 / 9140	Transparent matt or gloss	3 kg		
1.01.03.9130 / 9150	Transparent matt or gloss	9 kg		



The materials mentioned above are part of the entirety of the materials produced by the company, in line with its commercial policy.

Information regarding packaging, box and pallet staking are only exemplary; they can be modified without prior notice.

Technical details, properties, recommendations and information on **BAUER** products are supplied in good faith. They are based on the company's research and experience, provided that they are stored and applied onto normal conditions. As the method of using materials as well as project and environment conditions are beyond the control of the company in each individual application setting, the user of the product is held solely responsible for the result of application. No responsibility under any legitimate relationship can be substantiated against the company, based on the information set out herein. Product users are advised to refer to the latest revision of the technical manuals available.







**BAUER**

**B B T**™ | BAUER BUILDING  
TECHNOLOGIES

**INDUSTRIAL AREA OF MEGARA**  
19 100 Attica, Greece

info@netbauer.com  
T (+30) 210 57 44 222, F (+30) 210 57 40 777

[www.netbauer.com](http://www.netbauer.com)

